



Aspen Close, W5

£2,600 Per calendar month

A stunning three bedroom house in a desirable pocket of Ealing. This house boasts a large private garden, modern kitchen and spacious bedrooms.

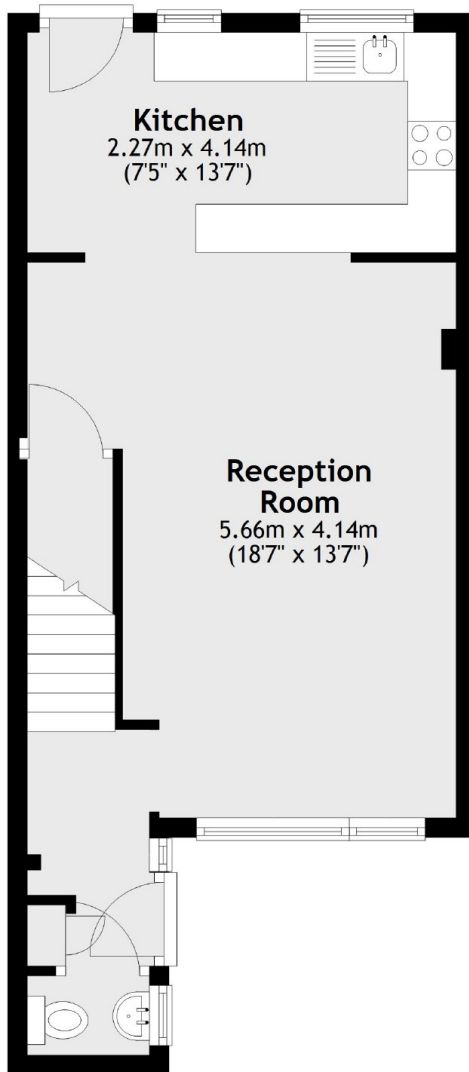
Aspen Close is only a short distance to South Ealing station and easy access to A406 and A4 for drivers. Aspen Close is also close to local amenities of South Ealing and is within easy reach of Ealing Broadway.

Features

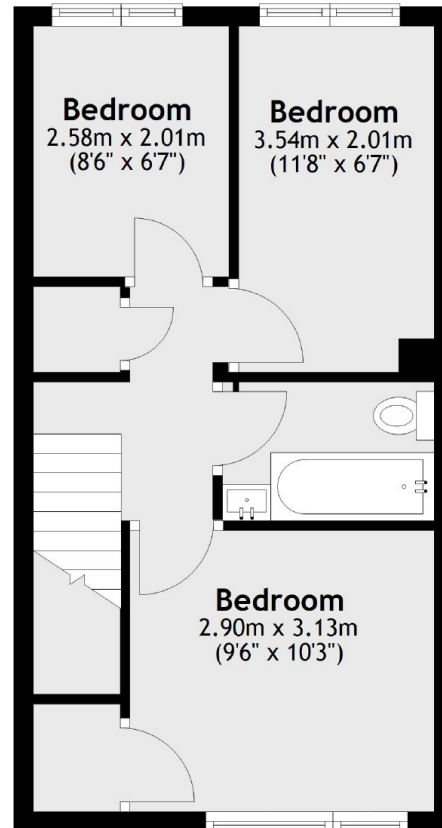
- Three Bedrooms
- Modern Kitchen
- Large Reception
- Private Garden
- South Ealing Station
- Off Street Parking

Aspen Close, London, W5

Ground Floor



First Floor



Total area: approx. 72.1 sq. metres (776.0 sq. feet)