



## St. Luke's Avenue, SW4

£2,400 Per calendar month

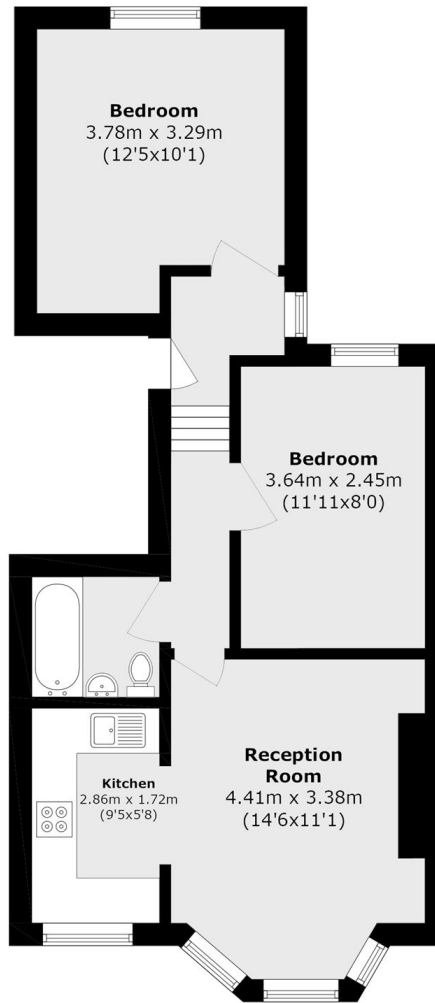
A well-presented two-bedroom flat with a spacious open-plan kitchen/reception area, modern bathroom and good natural light throughout.

The flat is ideally located within walking distance to both Clapham Common underground and the local amenities of Clapham High Street.

### Features

- Three Double Bedrooms
- Spacious Reception
- Separate Kitchen
- Top Floor Flat
- Generous Storage
- Prime Location

# St. Luke's Avenue, London, SW4



Total area (approx.): 49.5 sq. m (568.3 sq. ft)