

**Flat 3, 19B Glanvilles Mill,
Ivybridge, PL21 9PS
£129,950**


MILLINGTON TUNNICLIFF

Flat 3, 19B Glanvilles Mill, Ivybridge, PL21 9PS



1



1



1



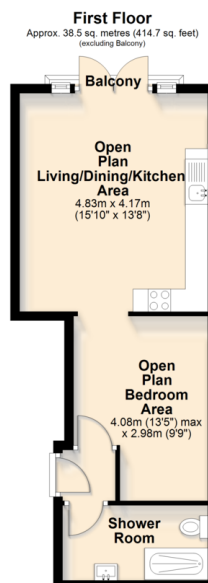
A



TB
C



FLOORPLAN



Total area: approx. 38.5 sq. metres (414.7 sq. feet)

£129,950

SUMMARY

A brand new studio flat converted from purpose built offices within the heart of Ivybridge, having views across the River Erme. The flat is located on the first floor with access from Glanvilles Mill and the communal parking area with accommodation comprising an entrance hall, open plan kitchen/dining and living area with bedroom area off and shower room/WC. The specification of conversion is high with benefits to include Upvc double glazing with French doors having a Juliet balcony, electric heating, an integrated kitchen and new sanitary fittings. No chain. EPC TBC.

Newly Converted Studio Flat | Views Over The River Erme | Quality Integrated Brand New Kitchen | Modern Shower Room | French Doors With Juliet Balcony | Open Plan Living/Kitchen/Dining Area | Access To Loft With Loft Ladder | Upvc Double Glazing | Electric Heating | Communal Parking Space at Rear

Please note: The images provided are a representation of how the property could be presented when finished.

CONTACT

19 Fore Street, Ivybridge,
Devon, PL21 9AB

EMAIL

info@millingtontunnicliff.co.uk

TEL

01752 896020

www.millingtontunnicliff.co.uk