



CAYENNE COURT, LONDON, SE1

£500,000

Goldman Greg are delighted to present this immaculate one bedroom second floor apartment, within the historic setting of Shad Thames, the perfect location for riverside living.

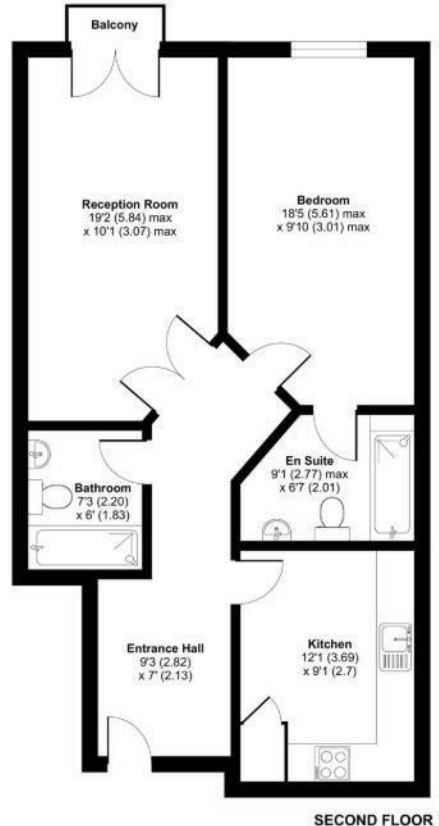
This stylish apartment is located centrally within popular Caraway Apartments, Cayenne Court. Having been lovingly looked after by the current owner this modern property offers a lovely ambience and a real sense of quality. Sympathetically designed and boasting 725sqft of living space this larger than average one bedroom property is simply stunning and a real joy! Entering the property, you find a spacious entrance hallway leading to all principal rooms. The main reception is an impressive 19ft with ample space for a dining area. A beautifully calm room ideal for relaxing and entertaining with access out onto a private balcony. The fully integrated kitchen is separate and has a large range of units offering a keen chef lots of space to get creative. The bedroom measures 18ft and benefits from it's own ensuite bathroom. There is a second bathroom offering privacy for guests. Further features include 24 hour concierge, a leisure complex including a swimming pool, sauna and gym, as well as secure parking.



Goldman Greg

Cayenne Court, London, SE1

Approximate Area = 725 sq ft / 67.4 sq m
For identification only - Not to scale



SECOND FLOOR



Energy Efficiency Rating		
	Current	Potential
Very energy efficient - lower running costs		
(92 plus) A		
(81-91) B		
(69-80) C		
(55-68) D		
(39-54) E		
(21-38) F		
(1-20) G		
Not energy efficient - higher running costs		
England & Wales	81	85
	EU Directive 2002/91/EC	

Agents Note: Whilst every care has been taken to prepare these particulars, they are for guidance purposes only. All measurements are approximate and are for general guidance purposes only and whilst every care has been taken to ensure their accuracy, they should not be relied upon and potential buyers/tenants are advised to recheck the measurements

Goldman Greg
143 Leaman Street
London
E1 8EY

02079770018
leads@goldmangreg.co.uk
www.goldmangreg.co.uk

