





15 Flemingston Road

St. Athan, Barry

On the outskirts of this popular development near to St Athan village, Vale of Glamorgan, stands this mid terraced family home. The property briefly comprises entrance porch, utility/store room, entrance hallway, sitting room, kitchen/diner, two double bedrooms and a shower room with separate WC. Outside there is an enclosed level westerly garden to the rear. The property enjoys gas central heating with a REPLACEMENT COMBINATION BOILER, UPVC double glazed windows and patio doors to the rear, and an allocated parking space nearby. Viewing is recommended to fully appreciate the deceptively spacious accommodation. The property attracts a service charge (circa £41/month). This charge we believe is used for the upkeep, maintenance and management of the estate, and the water supply. St Athan is within easy reach of the market town of Cowbridge, and Llantwit Major with their secondary schools and shops etc. The property is in need of some modernising, but would make an ideal first time buy.

Council Tax band: C

Tenure: Freehold

EPC Energy Efficiency Rating: D

EPC Environmental Impact Rating:





15 Flemingston Road

St. Athan, Barry

- 2 DOUBLE BEDROOMS. EPC TBC.
- MID TERRACED HOME.
- KITCHEN/DINER.
- PARKING SPACE NEARBY.
- UPVC. GCH COMBI.
- UTILITY/STORE.
- NO FORWARD CHAIN.
- IDEAL FIRST TIME BUY.
- EPC D66.





GROUND FLOOR

Entrance Porch

UPVC opaque front entrance door. Opaque glazed UPVC door to entrance hallway. Opening to utility/store area.

Utility Room

UPVC window to front. Potential for WC subject to the usual consents.

Hallway

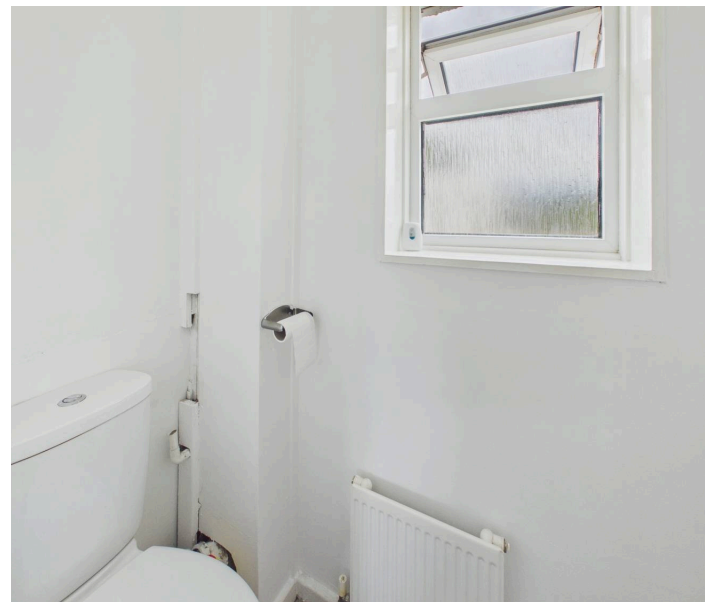
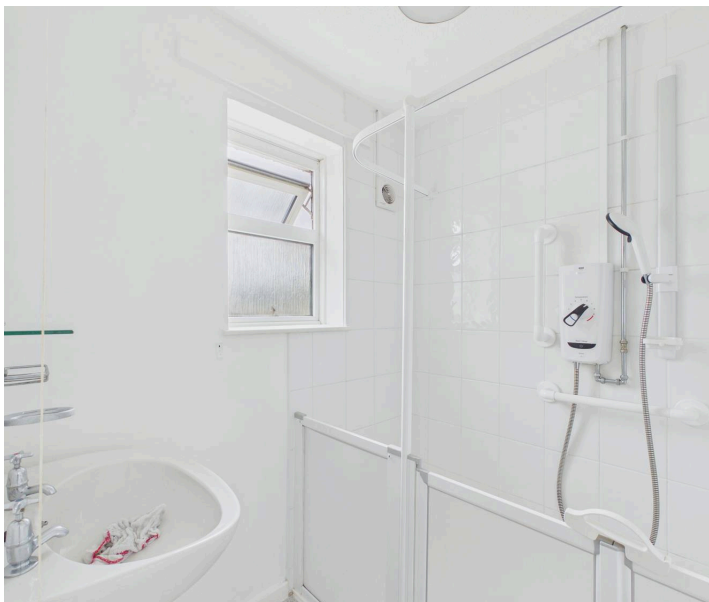
Stairs to first floor. Understairs cupboard. Radiator. Doors to sitting room and kitchen/diner.

Sitting Room

UPVC window to rear. Radiator.

Kitchen/Diner

UPVC patio doors to rear. Radiator. Space for dining room table and chairs. Breakfast bar. Fully fitted kitchen comprising eye level units base units with work surfaces over. Inset stainless steel sink with mixer tap. Electric hob with oven and hood. Space for white goods. UPVC window to front. Cupboard.





FIRST FLOOR

Landing

Doors to bedrooms, separate WC and shower room. Cupboard. Airing cupboard with wall mounted combination boiler providing the central heating and hot water. Loft access. Radiator.

Bedroom 1

UPVC window to rear. Radiator. Built in wardrobes.

Bedroom 2

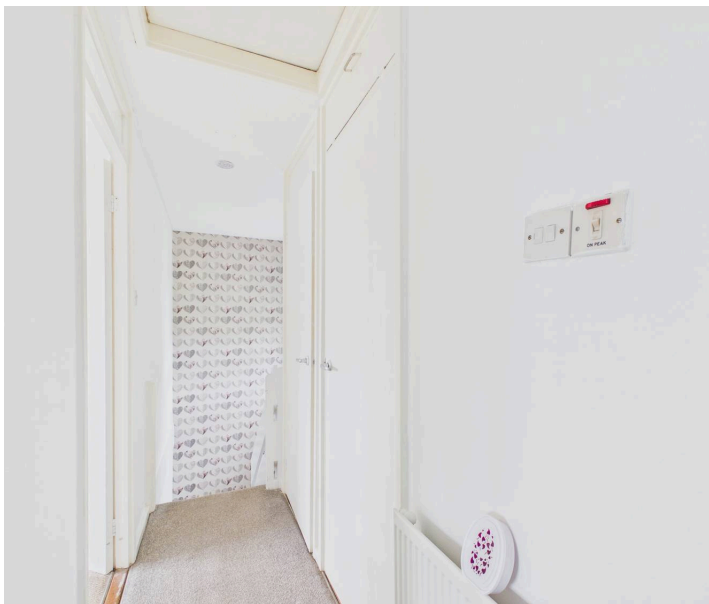
UPVC window to rear. Radiator. Built in wardrobes.

WC

Low level WC. UPVC opaque window to front. Radiator.

Shower Enclosure

UPVC opaque window to front. Shower enclosure for the less mobile, with mixer shower. Pedestal wash hand basin. Radiator.





GARDEN

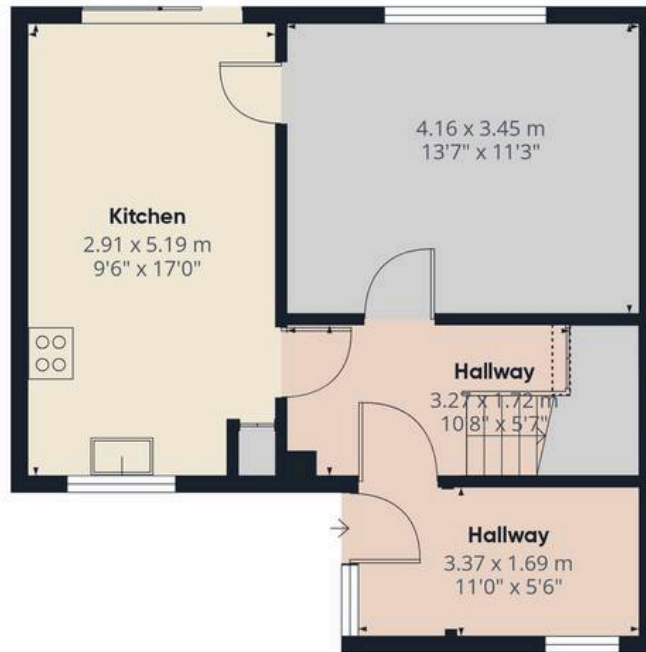
Front - an enclosed low maintenance garden area with gate. Rear Garden - An enclosed garden with gate.

ALLOCATED PARKING

1 Parking Space

There is an allocated parking space a short walk from the property.





Ground Floor



First Floor

Approximate total area⁽¹⁾

75.2 m²
809 ft²

Reduced headroom

0.2 m²
2 ft²

(1) Excluding balconies and terraces

Reduced headroom

----- Below 1.5 m/5 ft

Calculations reference the RICS IPMS 3C standard. Measurements are approximate and not to scale. This floor plan is intended for illustration only.

GIRAFFE360





Chris Davies Estate Agents

Chris Davies Estate Agent, Heritage House East Street – CF61 1XY

01446 792020

llantwitmajor@chris-davies.co.uk

www.chris-davies.co.uk/

HELPFUL INFORMATION whilst we try to ensure our sales particulars are complete, accurate and reliable, if there is any point which is particularly important, please ask and we will be happy to check it, including specific information in respect of commuting links, surroundings, noise, views, or condition. For security purposes, applicants who wish to view will need to provide their name, address and telephone number. All measurements are approximate to the widest and longest points. Buyers are advised to instruct a solicitor to obtain verification of tenure and a surveyor to check that appliances, installations and services are in satisfactory condition.