

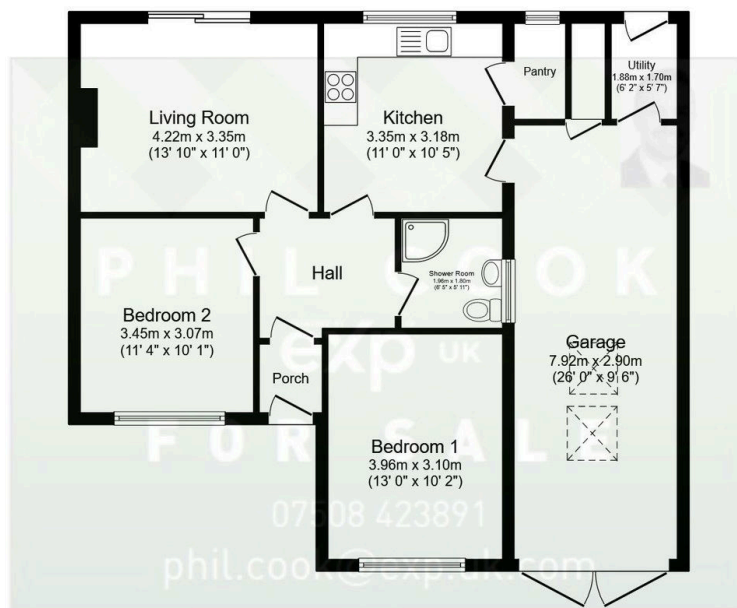
# 64 Bewdley Road, Stourport On Severn

£265,000

🛏️ 2 🚿 1 🚗 1



- Please Quote Reference PC0649. Agent - Phil Cook
- Immaculately Presented Two Bedroomed Bungalow
- Bewdley Road near to all the amenities of central Stourport
- Close to Memorial Park with superb local walks
- Good-sized Lounge, Refitted Kitchen with Pantry
- Two Double Bedrooms
- Refitted House Shower Room
- Large Garage Workshop to the Side.
- Early Viewing Advised
- Hit the 'Request Details' or 'Email Agent' button to secure your viewing now!



Floor Plan

Floor area 89.3 sq.m. (961 sq.ft.)

Total floor area: 89.3 sq.m. (961 sq.ft.)

This floor plan is for illustrative purposes only. It is not drawn to scale. Any measurements, floor areas (including any total floor area), openings and orientations are approximate. No details are guaranteed, they cannot be relied upon for any purpose and do not form any part of any agreement. No liability is taken for any error, omission or misstatement. A party must rely upon its own inspection(s). Powered by www.Propertybox.io

Please Quote Reference PC0649. Immaculately presented two bedroomed bungalow located on Bewdley Road near to all the amenities of central Stourport. Excellent facilities nearby including pubs, shops and restaurants. Close to Memorial Park with superb local walks. The property comprises of a good-sized lounge, refitted kitchen with pantry, two double bedrooms and a refitted house shower room. The property benefits from a driveway area to the front and running to a large garage. Double glazed and central heating throughout. Viewing is advised to

PHIL COOK



@ phil.cook@exp.uk.com

🌐 philcook.exp.uk.com

📞 07508 423 891

appreciate what the property has to offer. Hit the 'Request Details' or 'Email Agent' button to secure your viewing now!