



## 10 Bridge Close, Bristol, BS14 0TS

**£525,000**

Presenting an immaculate, detached home for sale, situated in a highly sought-after location. The property is surrounded by green spaces and walking routes, and conveniently located near schools. This home offers an outstanding opportunity for families seeking a superior, comfortable and stylish lifestyle.

The interior of the property is truly impressive, boasting four bedrooms, three reception rooms, and a high-spec kitchen. The master bedroom is a spacious double, featuring an en-suite and built-in wardrobes. The second bedroom is also a double, while the third and fourth bedrooms are single rooms, each offering ample space.

The heart of the home is undoubtedly the stylish sitting room, featuring a warm and inviting fireplace. This space effortlessly interconnects with the separate dining room, perfect for hosting dinner parties and family gatherings.



### Entrance Hall



### Kitchen / Breakfast

13'1" x 11'3" (4.00 x 3.43)



### Conservatory

19'1" x 8'8" (5.84 x 2.65)



### Sitting Room

14'6" x 11'7" (4.43 x 3.55)



### Dining Room

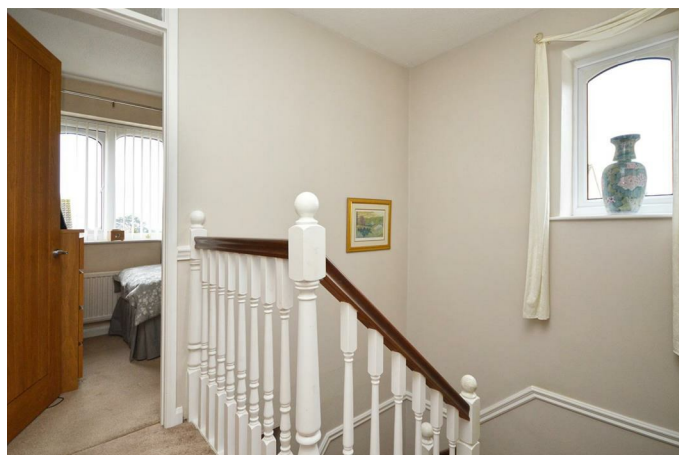
11'9" x 9'8" (3.60 x 2.97)



### Ground Floor WC



### First Floor Landing



### Bedroom One

13'3" x 11'8" (4.06 x 3.58)



### Bedroom Three

9'6" x 6'9" (2.92 x 2.07)



### En-Suite



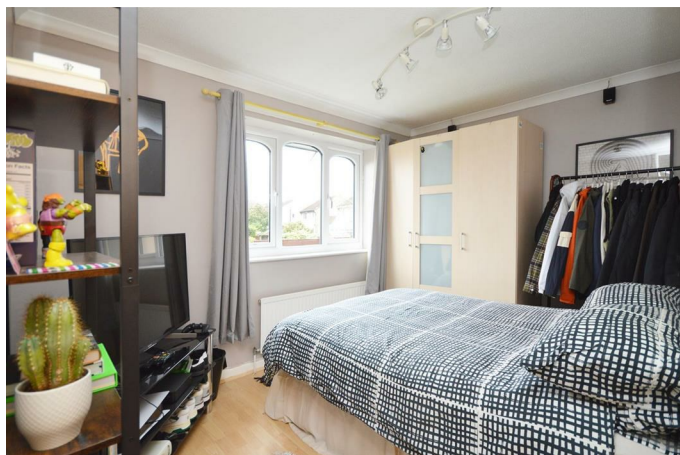
### Bedroom Four

9'4" x 6'6" (2.87 x 2.00)



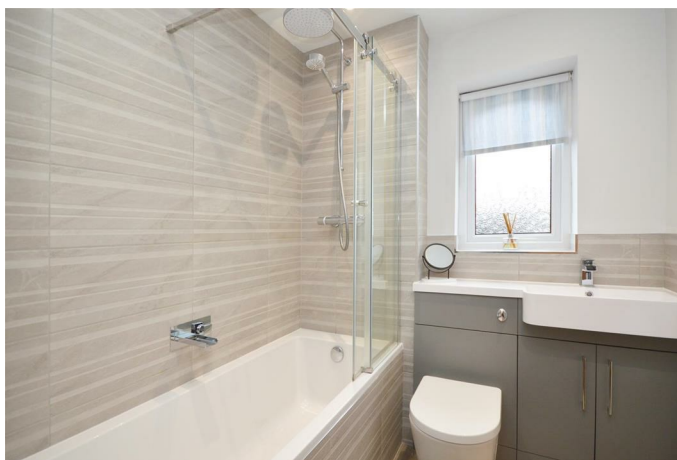
### Bedroom Two

11'10" x 8'6" (3.61 x 2.61)



### Bathroom

6'2" x 6'1" (1.90 x 1.86)





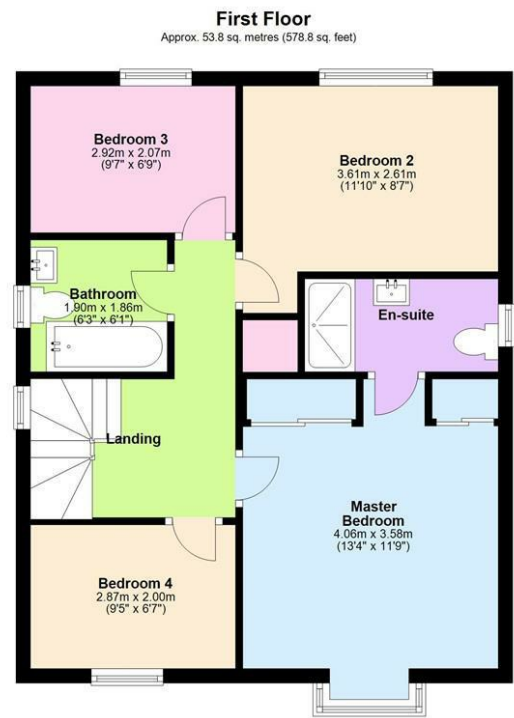
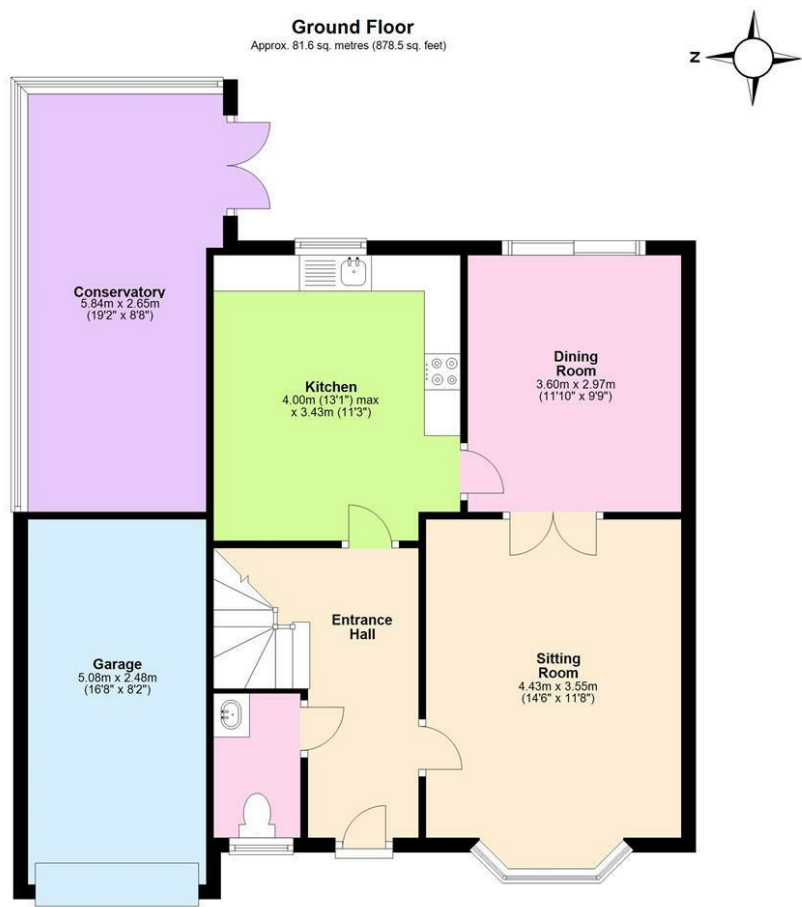
Outside



Garage

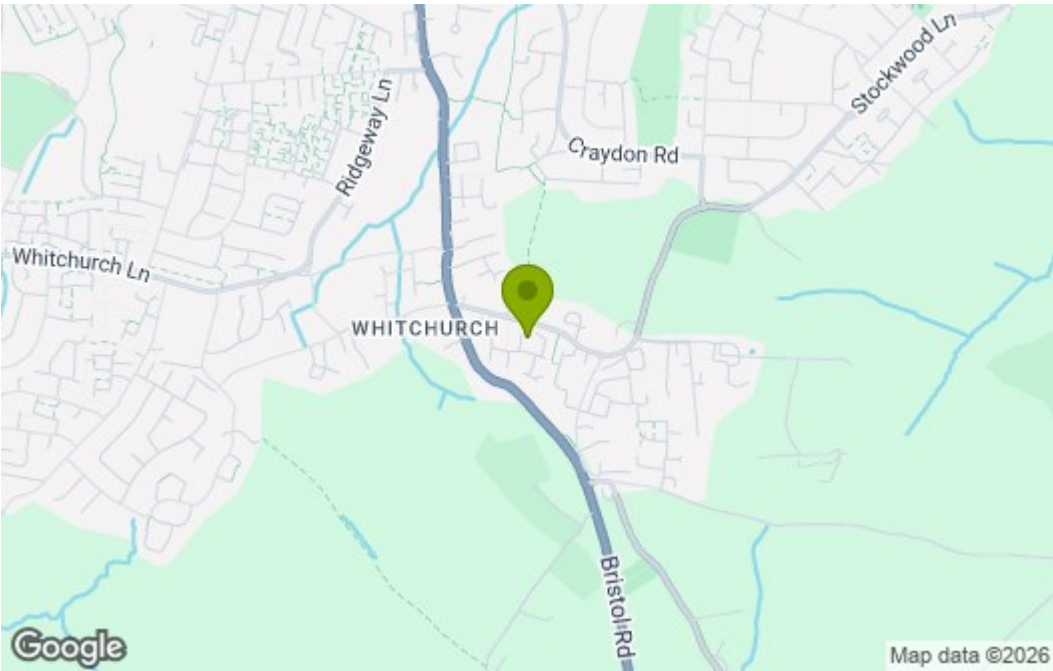
16'7" x 8'1" (5.08 x 2.48)

Floor Plan

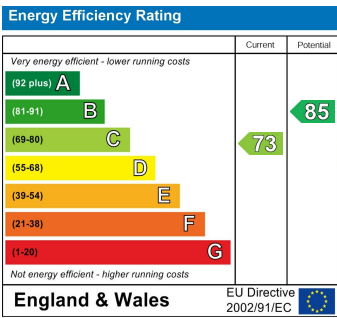


Total area: approx. 135.4 sq. metres (1457.2 sq. feet)

Area Map



Energy Efficiency Graph



These particulars, whilst believed to be accurate are set out as a general outline only for guidance and do not constitute any part of an offer or contract. Intending purchasers should not rely on them as statements of representation of fact, but must satisfy themselves by inspection or otherwise as to their accuracy. No person in this firms employment has the authority to make or give any representation or warranty in respect of the property.