



High Lane, Ridgeway
Sheffield

Offers in the Region of
£450,000

Property Type: Terraced House

Bedrooms: 5 | **Bathrooms:** 2 | **Receptions:** 1

Tenure: Freehold

Council Tax Band: D

A beautifully renovated stone-built terrace home on High Lane, Ridgeway. Bought in March 2025 and transformed throughout, this five-bedroom property offers stylish, turn-key living across four floors, an attic suite, and a generous south-facing garden – all in one of Sheffield's most picturesque village settings on the edge of open countryside. Property Ref RB0377

- Beautifully renovated stone-built terrace home in the heart of Ridgeway village
- Five bedrooms, including a versatile study/bedroom
- Principal bedroom suite with private en-suite shower room and Velux skylights
- Stylish marble-effect tiling to bathroom and en-suite
- Light, open-plan kitchen/dining room plus separate living room
- Approx. 1,716 sq ft (159.5 sq m) of accommodation, including cellar storage
- Generous south-facing garden with lawn, patio and mature hedged borders
- Picturesque village setting surrounded by open countryside, with easy access to Sheffield and the Peak District
- Gravel driveway providing off-road parking
- Property Ref RB0377.



Set within the heart of the sought-after village of Ridgeway, this stone-built terrace home has been the subject of an extensive, high-quality renovation since its purchase in March 2025, resulting in a beautifully presented family home that blends period character with contemporary finish.

Arranged over cellar, ground, first and second floors, the property offers approximately 1,716 sq ft (159.5 sq m) of accommodation. There is a mezzanie level which comprises a versatile fifth bedroom currently used as a study, a separate living room, and an open-plan kitchen/dining room, with useful additional storage in the cellar below. Upstairs, the first floor provides three further bedrooms and a stylishly refitted family bathroom, while the real showstopper is the Attic on the second floor — a substantial principal bedroom suite bathed in natural light from Velux skylights, complete with its own private en-suite shower room finished in elegant marble-effect tiling.

Outside, the property benefits from a gravel driveway providing off-road parking, leading to a generous, south-facing garden laid mainly to lawn and enclosed by mature hedging and raised borders — a lovely spot to relax and entertain, with far-reaching views out over the surrounding Ridgeway countryside.

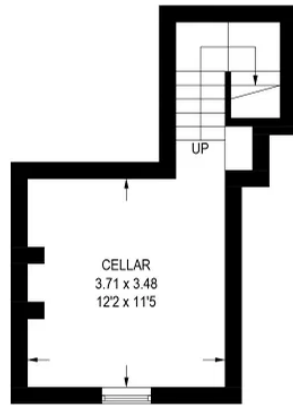
Ridgeway itself is a charming village on the edge of Sheffield, surrounded by open countryside and the ancient woodland and meadows of Moss Valley. The village has a strong community feel, with two pubs, a highly regarded fine-dining restaurant, a well-regarded primary school, a tennis club, and a sports and social club all close by, plus a golf course nearby. Sheffield city centre, the Peak District National Park, and the M1 are all within easy reach, making this an ideal base for both rural tranquillity and everyday convenience. Property Ref RB0377.



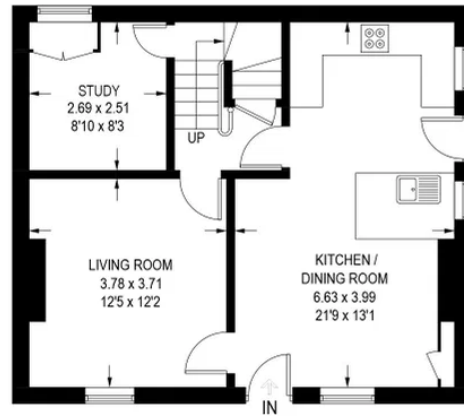


17 HIGH LANE

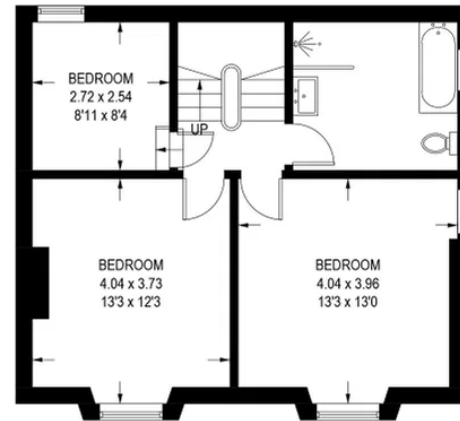
APPROXIMATE GROSS INTERNAL AREA = 159.5 SQ M / 1716 SQ FT
(INCLUDING CELLAR)



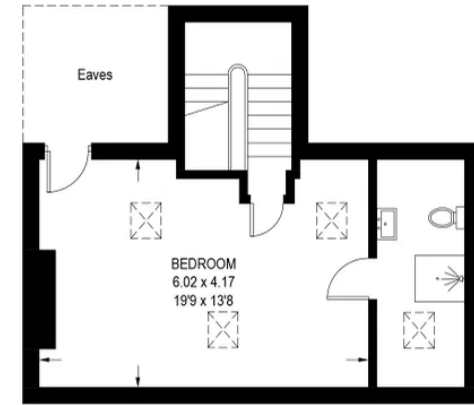
CELLAR
18.5 SQ M / 199 SQ FT



GROUND FLOOR
51.8 SQ M / 557 SQ FT



FIRST FLOOR
52.0 SQ M / 560 SQ FT



SECOND FLOOR
37.2 SQ M / 400 SQ FT

Illustration is for identification purposes only,
measurements are approximate, not to scale.