



54 Crantock Drive
Heald Green SK8 3EZ
£315,000



MAINANDMAIN.CO.UK



54 Crantock Drive Heald Green SK8 3EZ

£315,000

Well presented throughout, this spacious townhouse offers versatile accommodation which is presented to an excellent standard.

The accommodation comprises: Entrance hallway, shower room/WC, office/bedroom and a superb open-plan room overlooking the garden with bi-fold doors and fitted (second) kitchen area: Perfect for entertaining and enjoying the garden, with a paved seating area and lawn beyond.

To the first floor is a well-proportioned lounge which enjoys plentiful natural light from the large double-glazed windows, all with custom fitted blinds. The room opens to a fitted dining kitchen. A stylish refitted bathroom with bath and separate shower enclosure completes the first floor.

To the second floor are three bedrooms: A large L-shaped principal bedroom fronts the house. There are two further well-proportioned bedrooms to the rear.

The house stands behind a double width, block-paved driveway whilst to the rear is an enclosed garden which has paved seating area and lawn.

These homes are sought-after and versatile, appealing to a wide range of buyers. The convenient location gives easy access to amenities, schools and transport networks. An early internal inspection is essential.

- Gas Central Heating
- PVCU Double Glazing
- Versatile Accommodation
- Superb Reception Room with Bi-fold Doors
- Downstairs Shower Room/WC
- Open-plan Lounge/Dining Kitchen
- Modern Bathroom
- Four Bedrooms
- Driveway
- Gardens

Entrance Hallway

Office/Bedroom Four
7'10 x 10'1

Garden Room
12'8 x 15'0

Shower Room/WC
3'3 x 9'2

First Floor

Open-plan Lounge/Dining Kitchen
27'7 x 15'0 red to 8'8

Bathroom
8'2 x 6'0

Second Floor Landing

Bedroom One
14'4 red to 7'9 x 15'0 max
(L-shaped)

Bedroom Two
13'1 x 8'8

Bedroom Three
9'9 x 7'3

Externally

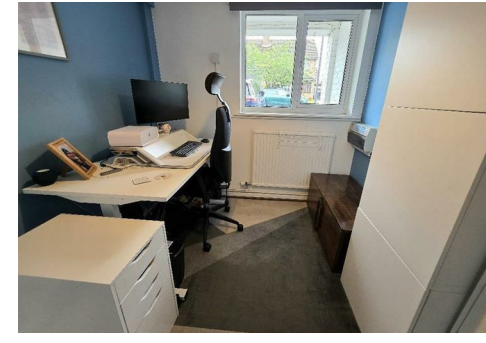
Double width block-paved driveway to the front.
Enclosed garden to the rear with paved seating area with lawn beyond.

Leasehold Information

942 years remain on a lease which ends on 10/07/2968.
Ground Rent of £12 PA payable.



Tenure: Leasehold
Council Tax: Stockport C



Crantock Drive

Approximate Gross Internal Area
1148 sq ft - 107 sq m

Shower Room
9'9 x 3'3
2.97 x 0.99m

Bathroom
8'2 x 6'0
2.49 x 1.83m



GROUND FLOOR

FIRST FLOOR

SECOND FLOOR

Not to Scale. Produced by The Plan Portal 2026
For Illustrative Purposes Only.

To view this property call Main & Main on 0161 437 1338

