

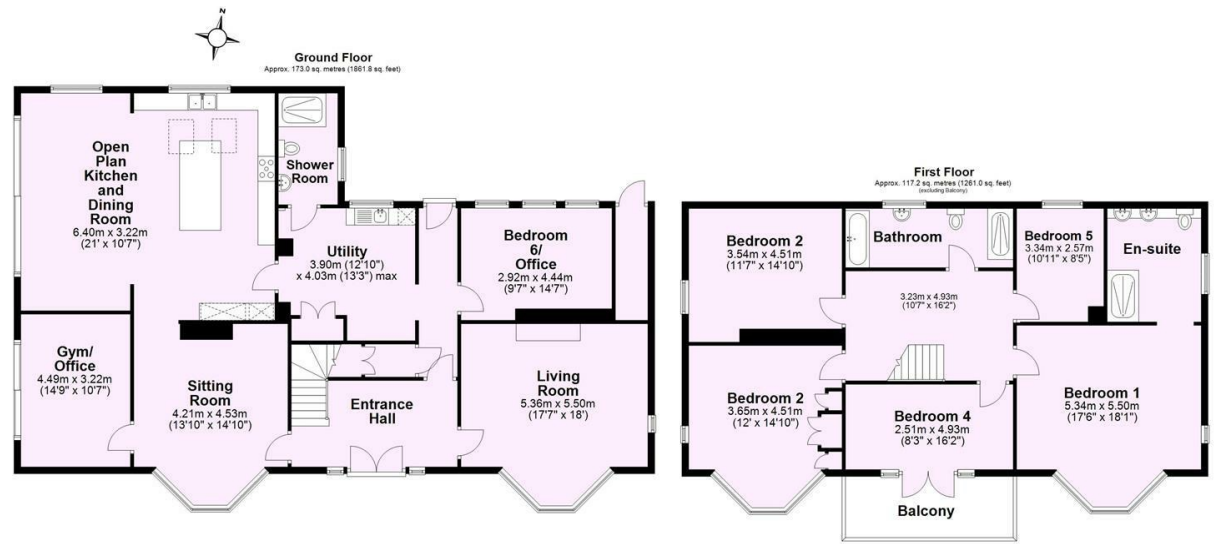


HUDSON
MOODY

**The Kloof, 44 Long Ridge Lane, Upper Poppleton,
York YO26 6HA**

Situated in the sought after village of Upper Poppleton, close to York's outer ring road and within easy reach of the City centre, an exceptional detached six-bedroom house, sympathetically updated to an extremely high standard, yet still retaining much of the charm of its era.

- Exceptional Detached House
- Excellent Village Location Close to York
- Open Plan Dining Kitchen
- Two Sitting Rooms
- Two Further Versatile Rooms On The Ground Floor (Currently Used As A Gym & An Office)
- Utility and Shower Room
- En-Suite Master Bedroom
- Four Additional Double Bedrooms
- Wrap Around Lawned Gardens
- Double Garage and Parking



Total area: approx. 290.1 sq. metres (3122.9 sq. feet)

Guide Price £1,600,000

Tenure: Freehold

Council Tax Band: G





