



**Price**  
**£155,000**

**Leasehold**

3x  2x  1x 

**Gurnard Pines,  
Cockleton Lane, Cowes,  
Isle of Wight, PO31**

**Pittis**   
Helping you move forwards



## Main features

- Semi detached bungalow in a popular area, close to Cowes
- 52 week residency
- Easy transport links to the mainland
- Lovely open plan kitchen/lounge/diner
- On site facilities with communal grounds and woodland to enjoy

## Accommodation

### GROUND FLOOR

Kitchen / Living Area: 23'2 x 13'5  
(7.07m x 4.09m)

Bedroom 3: 11'1 x 8'5 (3.38m x 2.57m)

Bedroom 2: 13'1 x 11'3 (3.99m x 3.43m)

Bedroom 1 : 14'5 x 11'6 (4.40m x 3.51m)

En suite Bathroom

Bathroom

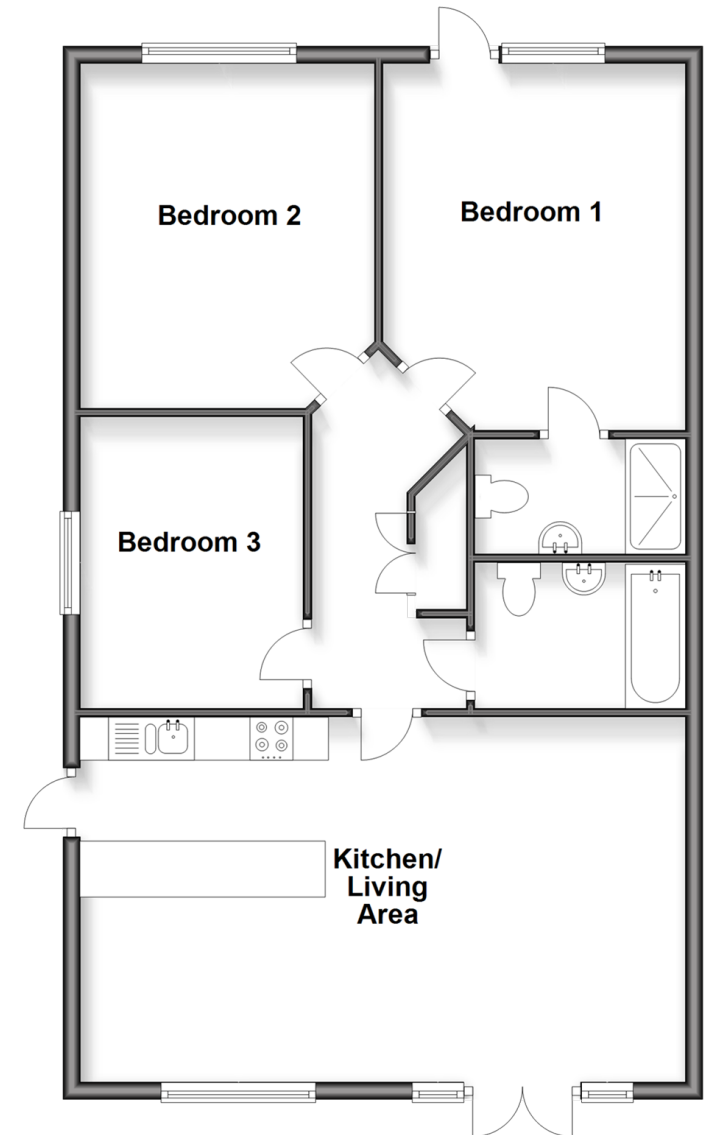
### OUTSIDE

Balcony

Allocated Parking Space

## Ground Floor

Approx. 83.6 sq. metres (899.7 sq. feet)



**Call Cowes - 01983 292345 ■ pittis.co.uk**

- Legal advice should be taken to verify fixtures/fittings, planning, alterations and/or lease details
- Appliances & services are untested, dimensions are approximate and floor plans are not to scale



60119342/20260122/1JD/MMF