



Kingston Road, SW20

£1,850 Per calendar month

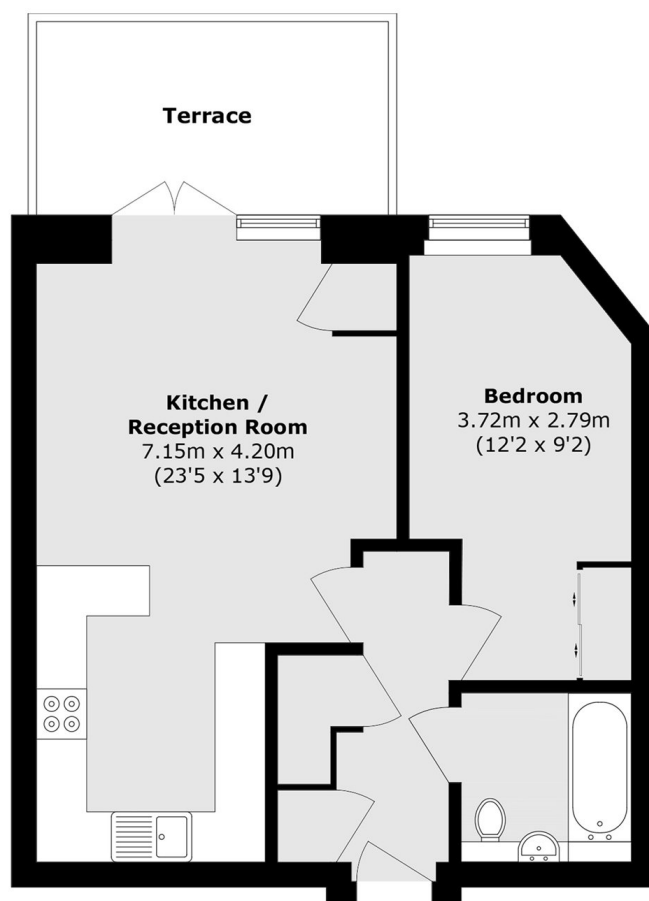
A beautifully presented, new one bedroom first floor apartment has a bright and airy setting with a open plan living, dining and kitchen area, generous double bedroom and a private balcony that provides the perfect spot for morning coffee or evening unwinding.

The apartment is moments from several local shops and amenities in the nearby Raynes Park and Wimbledon town centre. Cannon Hill Common and Dundonald Park are nice open green spaces nearby.

Features

- One Bedroom
- First Floor
- Balcony
- Modern Development
- Close to Station
- Close to Shops

Kingston Road, London, SW20



Total area (approx.): 52.3 sq. m (562.9 sq. ft)

Terrace area (approx.): 9.7 sq. m (104.4 sq. ft)