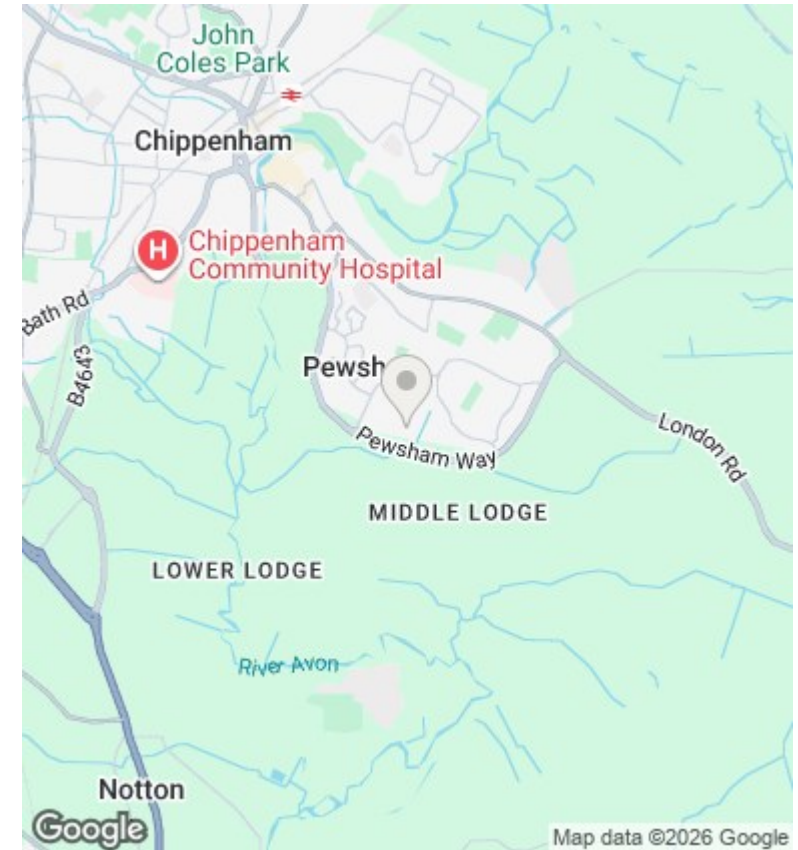
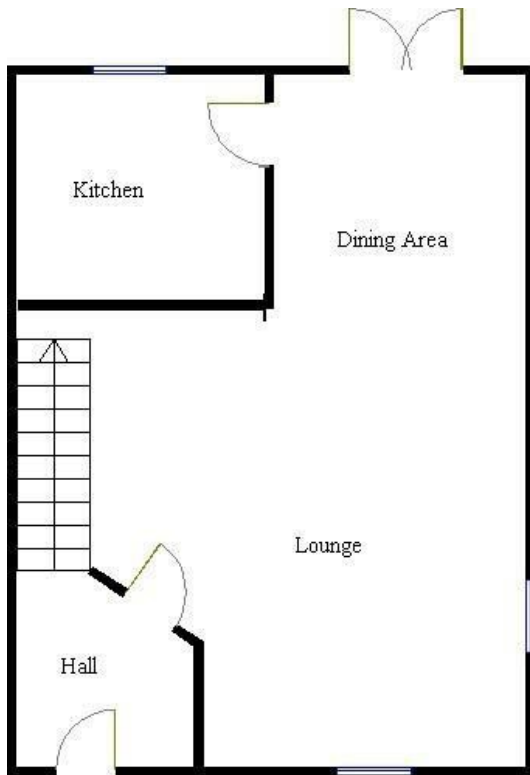




## 19 Holmes Close, Chippenham, SN15 3FQ

£1,250 Per Month

- Two Bedroom Mid Terrace
- Modern bathroom suite
- Allocated parking for added convenience
- Modern fitted kitchen with contemporary finishes
- Two well-proportioned bedrooms
- Available Now
- Spacious lounge diner providing a versatile living space
- Enclosed rear garden offering a private outdoor space



## Directions

## Viewings

Viewings by arrangement only. Call 01249 466999 to make an appointment.

## Council Tax Band

B

## EPC Rating:

D

Energy Efficiency Rating		
	Current	Potential
<i>Very energy efficient - lower running costs</i>		
(92 plus) <b>A</b>		
(81-91) <b>B</b>		
(69-80) <b>C</b>		
(55-68) <b>D</b>	<b>67</b>	
(39-54) <b>E</b>		
(21-38) <b>F</b>		
(1-20) <b>G</b>		
<i>Not energy efficient - higher running costs</i>		
<b>England &amp; Wales</b>	EU Directive 2002/91/EC	