



Randolph Mews, W9

£2,250,000

A three-bedroom mews house with three garages in need of modernisation and updating. Set in one of Little Venice's premier streets just moments from The Regent's Canal.

The house has been in the same ownership for many years and although it has been well-maintained, is now ready for the incoming purchaser to put their own stamp on it. Other adjacent houses in the mews have added an extra floor by way of an extension and, subject to the necessary planning consents, this should be possible here.

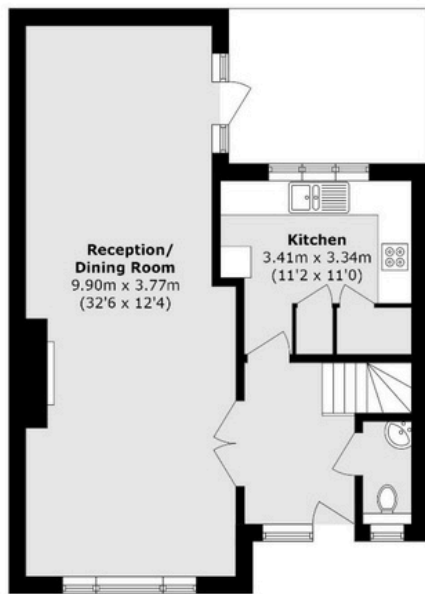
The property comes with the rare advantage of three garages and a discrete patio garden and is close to Warwick Avenue and Maida Vale underground stations (Bakerloo Line).

Tenure - Freehold HM Land Registry Title Number NGL38256.

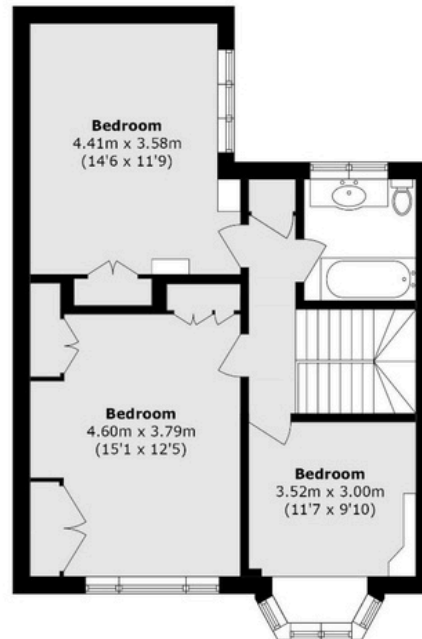
Features

- Unmodernised mews house
- Three garages
- Patio garden
- Outstanding location
- Potential to add a further floor
- Close to transport

3 Randolph Mews, Maida Vale, London W9 1AW Floor Plan



Ground Floor



First Floor

Total Area (approx.): 112.9 sq. m (1215.2 sq. ft)