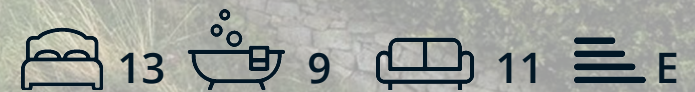




## Cuckoostone Grange Farm Chesterfield Road

Matlock Moor, Matlock, DE4 5LZ

£2,750,000



## Cuckoostone Grange Farm

Matlock Moor, Matlock, DE4 5LZ

Welcome to Cuckoostone Grange, a truly exceptional estate set within one of the most breathtaking and sought-after positions in Matlock. Surrounded by far-reaching views across the Derbyshire Dales and overlooking the neighbouring golf course, this remarkable setting offers a rare sense of space, privacy and natural beauty. Comprising a collection of four individual properties, the estate presents a unique opportunity for a variety of uses, whether as a private residence, multi-generational living or an income-generating lifestyle investment.

Peacefully set within approximately 4 acres of private grounds, the property enjoys a truly enviable position, with panoramic views stretching across open countryside. Beautifully manicured gardens wrap around the home, creating a series of inviting outdoor spaces, while a substantial gated driveway provides parking for multiple vehicles. Adding to its unique appeal, the grounds also feature a private tennis court and an established vineyard, offering a rare blend of leisure, lifestyle and rural charm within an exceptional setting.

The estate comprises a beautifully curated collection of individual homes, each rich in character and charm. At its heart sits Cuckoostone Grange, an impressive five-bedroom farmhouse, complemented by The Byre and The Hayloft—both substantial barn conversions offering three bedrooms and a series of versatile reception spaces. Completing the collection is The Old Stables, a stylish and thoughtfully designed two-bedroom single-storey home. Together, these properties create a unique and cohesive setting, offering flexibility for a variety of lifestyles, from multi-generational living to income potential.

### Cuckoostone Grange

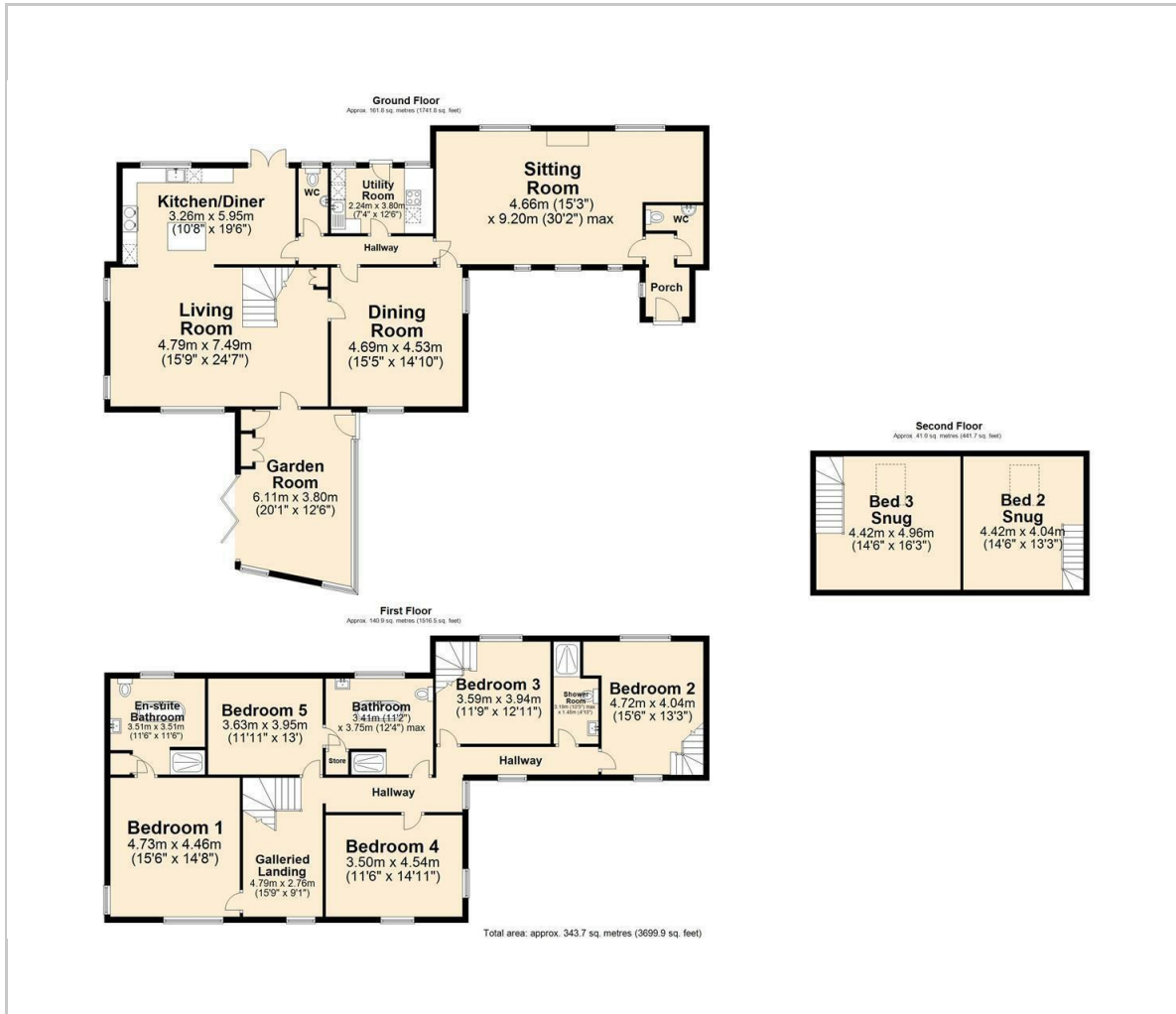
#### The Byre





The Hayloft  
The Old Stables  
Planning Permission

## Floor Plan



## Viewing

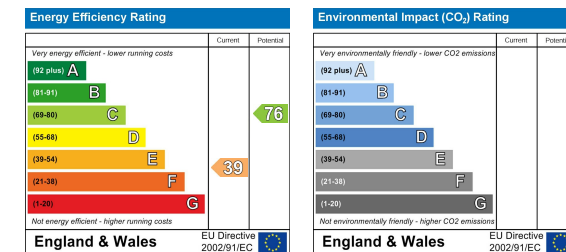
Please contact our Chesterfield Office on 01246 567540 if you wish to arrange a viewing appointment for this property or require further information.

These particulars, whilst believed to be accurate are set out as a general outline only for guidance and do not constitute any part of an offer or contract. Intending purchasers should not rely on them as statements of representation of fact, but must satisfy themselves by inspection or otherwise as to their accuracy. No person in this firm's employment has the authority to make or give any representation or warranty in respect of the property.

## Area Map



## Energy Efficiency Graph



131 Chatsworth Road, Chesterfield, Derbyshire, S40 2AP  
T: 01246 567540



E: info@dalesandpeaks.co.uk  
www.dalesandpeaks.co.uk