



Corrance Road, SW2

£550,000

Dexters



Corrance Road, SW2

Situated on Corrance Road, this charming two bedroom split level period conversion offers generous proportions and well balanced accommodation. Arranged over the upper floors of an attractive period building, the property features a bright and spacious reception room. Large windows allow an abundance of natural light to fill the space, enhancing the sense of openness throughout. The property also benefits from a separate kitchen, thoughtfully arranged with ample storage and space for dining. Both bedrooms are well proportioned doubles, complemented by a well appointed bathroom and an additional study. Further benefits include a share of freehold.

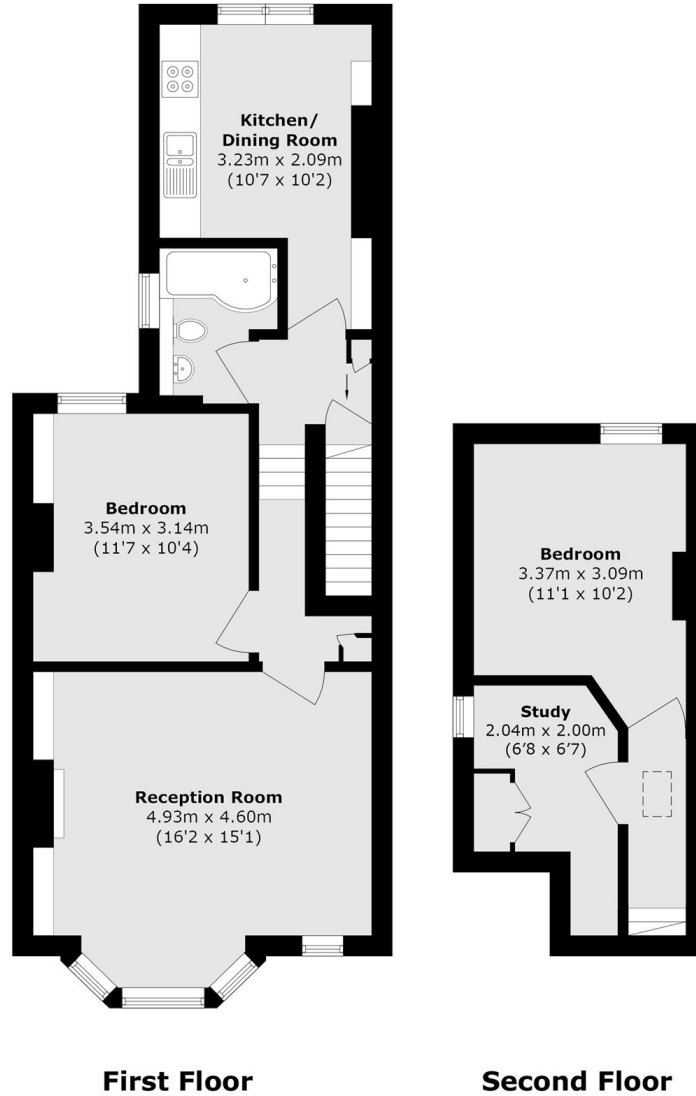
Corrance Road is situated just off Acre Lane, perfectly positioned between vibrant Brixton and trendy Clapham. Brixton offers superb transport connections, including National Rail services, the Victoria Line, and a range of regular bus routes.

Features

- Top Floor
- Share of Freehold
- Two Double Bedrooms
- Split Level
- Separate Kitchen



Corrance Road, London, SW2



Total area (approx.): 76.9 sq. m (827.7 sq. ft)