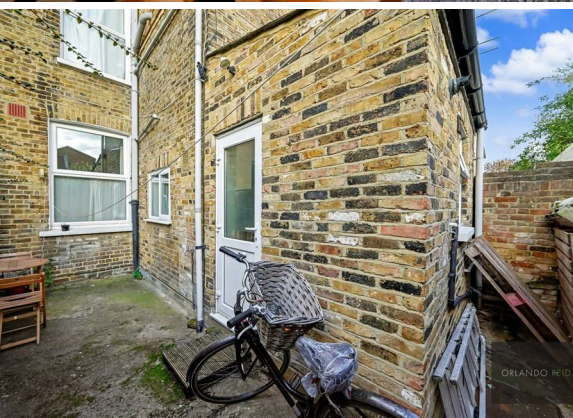




**1 Bed
House - Detached
located in**

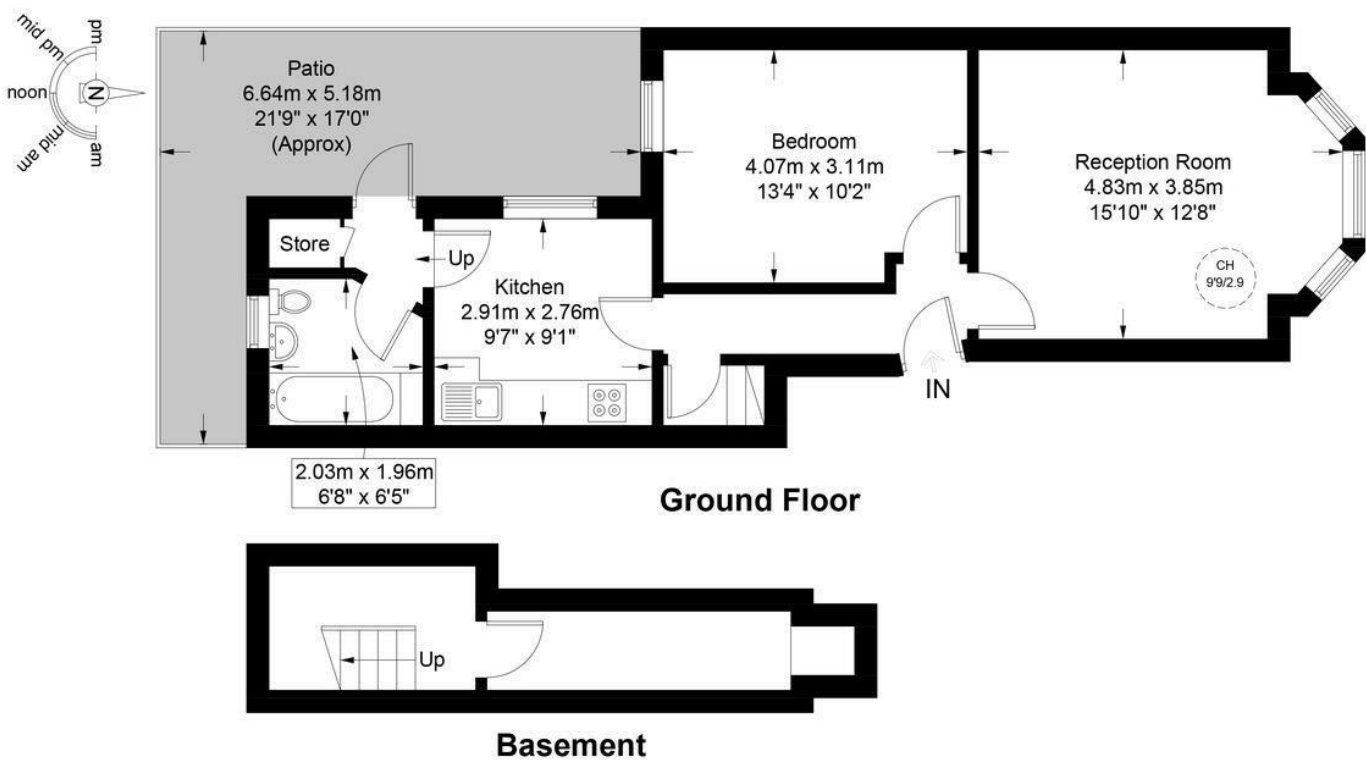
£1,750 PCM



ORLANDO REID

Sandmere Road, SW4

Approximate Gross Internal Area = 634 sq ft / 58.9 sq m



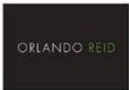
DIRECTIONS

CONTACT

1-3 Old Town
Clapham
London
SW4 0JT

E: lettings@orlandoreid.co.uk
T: 020 7627 3197
www.orlandoreid.co.uk

ORLANDO REID



This plan is for layout guidance only and is not drawn to scale unless stated. All dimensions, including windows, doors, and the Total Gross Internal Area (GIA), are approximate. For precise measurements, please consult a qualified architect or surveyor before making any decisions based on this plan.

