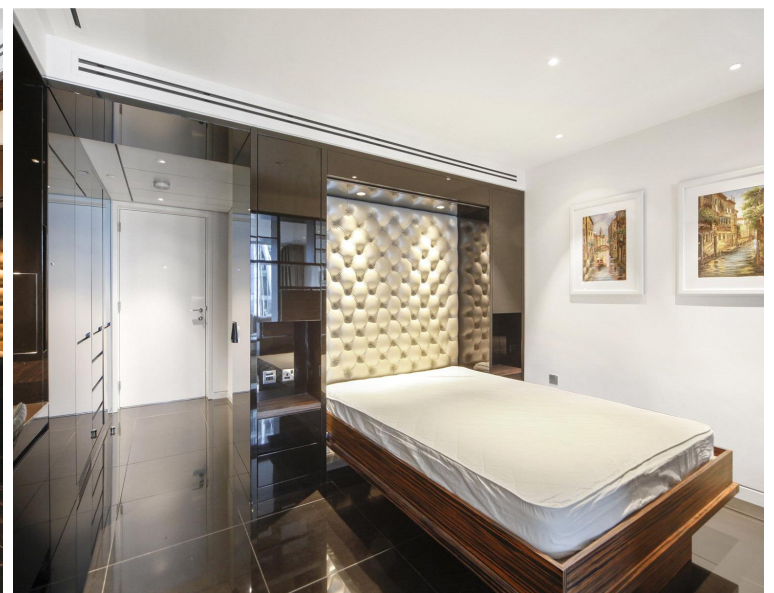


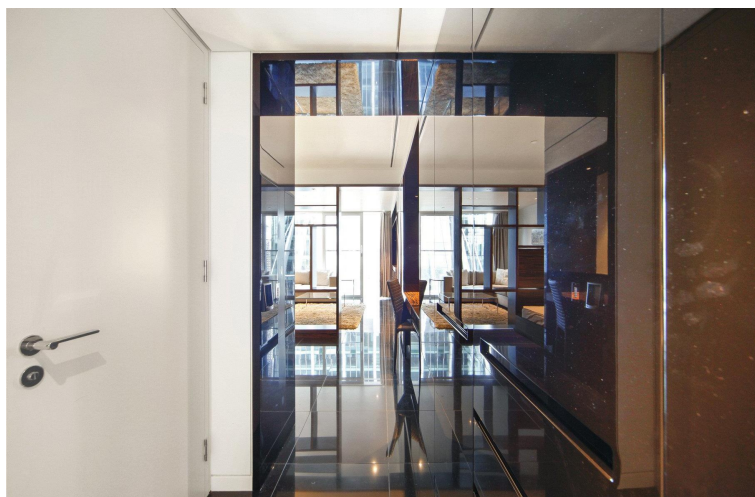
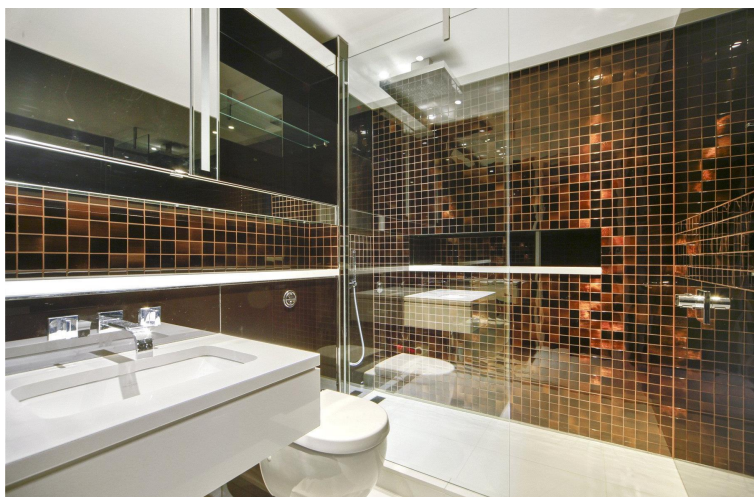
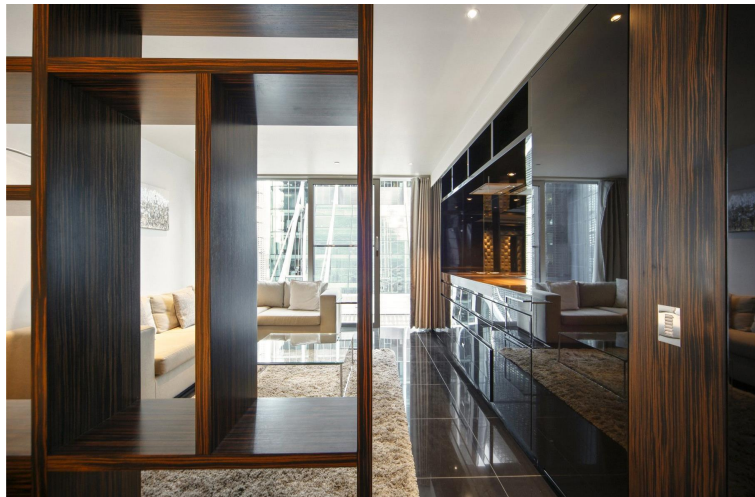


Moor Lane, London EC2Y

Price £625 per week - Furnished







Description

A luxury Galley Suite in the prestigious Heron development, located in the heart of the City of London.

This luxury apartment offers a well sized reception area, partitioned sleeping area with a desk / working space, open plan kitchen with Miele appliances, dark Porcelain flooring throughout and luxury shower room. The property has a high specification with comfort cooling and central control panel. Offered fully furnished, and well designed to utilise all available space and maximise storage.

The development is located in the heart of the City of London and is within easy reach of stations such as Bank (0.5 miles) and Moorgate (0.2 miles). The Heron benefits from an on-site gym, exclusive resident's club and 24 hour concierge. Parking not included.

We understand that cooling / heating is delivered via a communal system for which separate charges apply.

Council tax band: E. Rent is payable on a monthly basis, and you may be required to pay more than a month's rent in advance for tenancies with annual rents exceeding £100,000. You will be required to pay a 1 week holding deposit following a successful offer. Tenancies with annual rents up to £50,000 will require a 5 weeks' security deposit, while those exceeding this threshold will require a 6 weeks' deposit. Utility bills, council tax, telephone line and broadband are not included in the rent. As well as paying the rent, you may also be required to make some additional permitted payments. If your tenancy does not qualify as an APT, additional fees may apply. Please visit jll.co.uk/fees for details of fees that may be payable when renting a property. To check broadband and mobile phone coverage please visit Ofcom here ofcom.org.uk/phones-telecoms-and-internet/advice-for-consumers/advice/ofcom-checker

- Studio
- 1 Bathroom
- 9th floor
- Open-plan kitchen with Miele appliances
- High specification
- 24 hour concierge
- 0.2 miles from Moorgate Station
- Approx. 427 sq ft (39 sq m)
- Furnished
- EPC: C

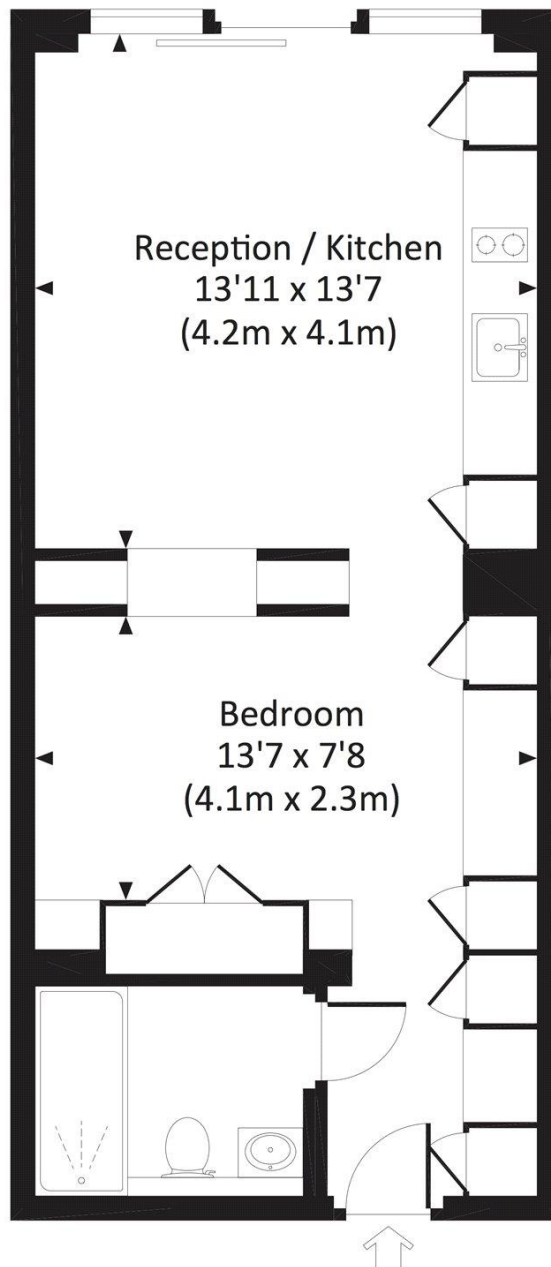
Floorplan

427 sq ft | 40 sq m

MOOR LANE, EC2Y

Approx. gross internal area

427 Sq Ft. / 39.7 Sq M.



NINTH FLOOR



All measurements have been made in accordance with RICS Code of Measuring Practice which are approximate only and only for illustrative purposes. For the avoidance of doubt, Dowling Jones Design shall not be liable for any reliance on these measurements. © 2016 www.dowlingjones.com 020 7610 9933

City
25 Walbrook The Walbrook
Building,
London EC4N 8AF
+4420 7337 4000

Urban living, your way.

jll.co.uk/residential

© 2019 Jones Lang LaSalle IP, Inc. All rights reserved. All information contained herein is from sources deemed reliable; however, no representation or warranty is made to the accuracy thereof.

