



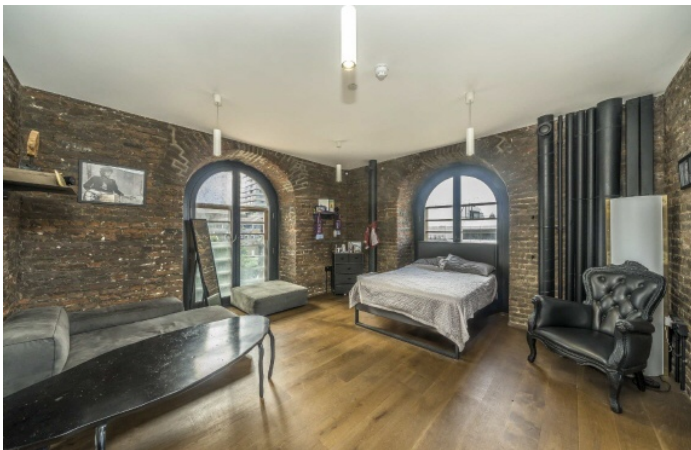
## St. Thomas Street, SE1 £1,350,000

Occupying the historic tower of St Thomas's Church at London Bridge, this truly exceptional two-bedroom apartment is arranged across five remarkable storeys, offering a rare opportunity to live within one of the capital's most distinctive architectural settings.

Superbly located opposite London Bridge Station, next door to the The Shard, the apartment sits just off Borough High Street and the renowned Borough Market. Bermondsey Street, with its celebrated restaurants, galleries and cafés, is a short walk away, while the River Thames lies approximately 100 metres away as the crow flies.

### Features

- Historic Church Tower
- Built By Thomas Cartwright in 1703
- 360 Degree Skyline Views
- Five Unique Levels
- Two Double Bedrooms
- Chain Free Sale



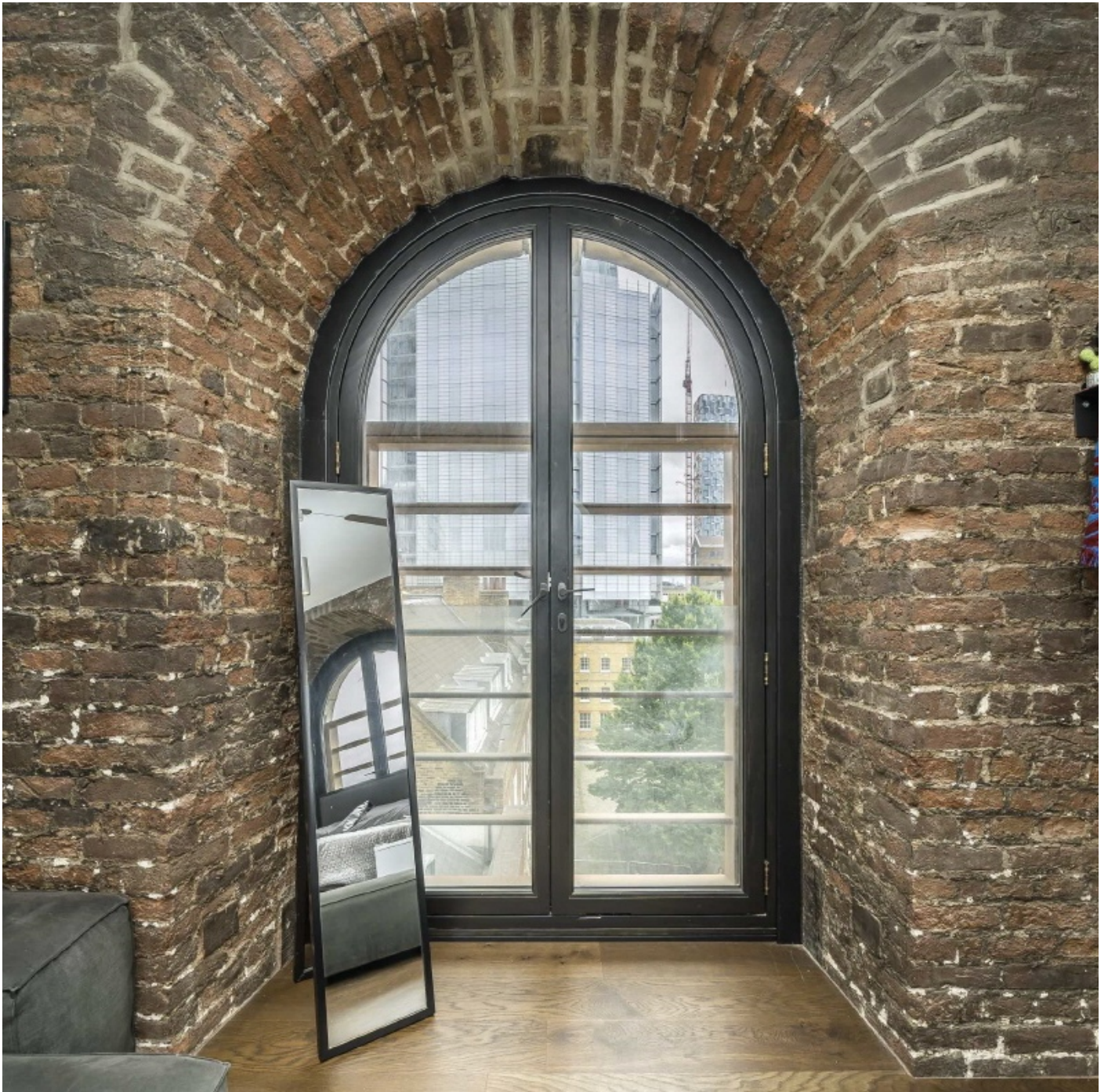
## St. Thomas Street, SE1

Originally constructed in 1703 by Thomas Cartwright, a master mason and contemporary of Sir Christopher Wren, the building is steeped in history. Over the centuries it has served a variety of notable purposes, including as a chapter house for Southwark Cathedral and, intriguingly, as an operating theatre for St Thomas's Hospital.

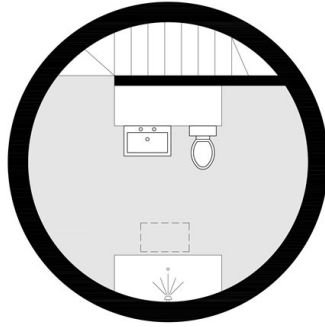
The apartment itself blends this rich heritage with contemporary refinement. Its vertical layout unfolds dramatically through the tower, creating a sequence of unique living spaces characterised by striking architectural features, generous proportions and an undeniable sense of character

Crowning the property is a newly added roof terrace, an extraordinary vantage point that frames breathtaking panoramic views across London's iconic skyline. From this elevated retreat, the city's historic landmarks and modern architecture create a spectacular backdrop for both quiet moments and elegant entertaining.

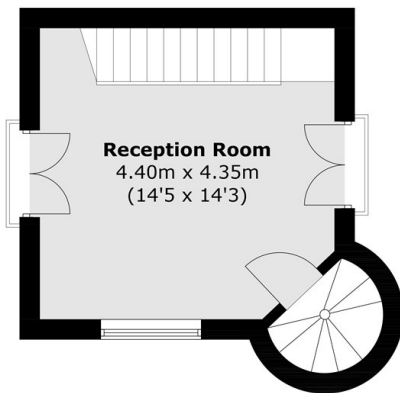
Rare, atmospheric and utterly unique, this remarkable home offers an unparalleled living experience in the heart of London Bridge.



St. Thomas Street,  
London, SE1

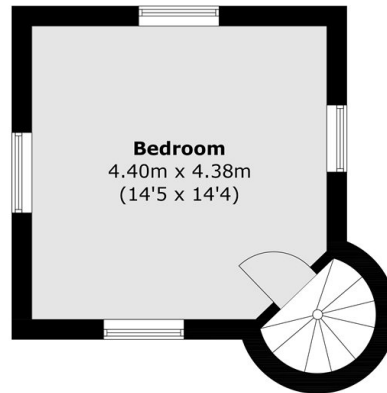


**Seventh Floor**



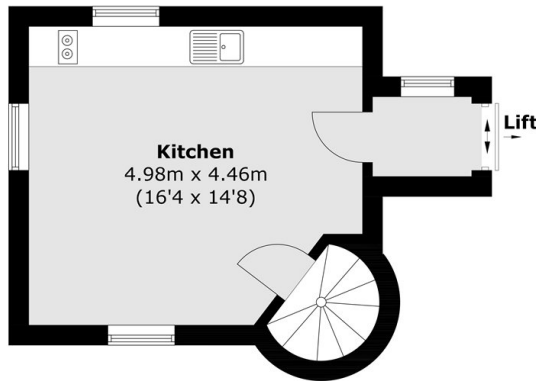
**Reception Room**  
4.40m x 4.35m  
(14'5 x 14'3)

**Sixth Floor**



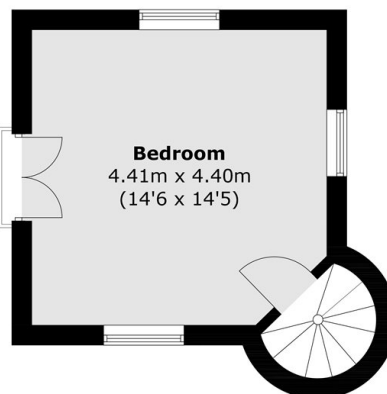
**Bedroom**  
4.40m x 4.38m  
(14'5 x 14'4)

**Fifth Floor**



**Kitchen**  
4.98m x 4.46m  
(16'4 x 14'8)

**Third Floor**



**Bedroom**  
4.41m x 4.40m  
(14'6 x 14'5)

**Fourth Floor**

Total area (approx.): 101.9 sq. m (1,096.9 sq. ft)