

# Belmont Drive

Maidenhead • Berkshire • SL6 6JZ

Offers In Excess Of: £900,000



coopers  
est 1986

# Belmont Drive

Maidenhead • Berkshire • SL6 6JZ

A rarely available four bedroom detached home with a generous side plot, offering excellent potential to extend (subject to the usual planning consents). This is a fantastic opportunity to develop the property or create a substantial family home tailored to your needs. Located on Belmont Drive, a popular residential road within the St Marks area, the property is conveniently positioned for local shops, schools and excellent transport links including the Elizabeth Line. The ground floor comprises a separate living room with gas fireplace, a designated dining room, spacious kitchen, utility room, WC and integral garage. The first floor offers four well-proportioned bedrooms with built in storage, serviced by the family bathroom. Outside, the property benefits from driveway parking, a private rear garden and access to the garage.

Huge potential to extend STPP

No chain

A unique opportunity

Desirable location

Four generous bedrooms

Integral garage

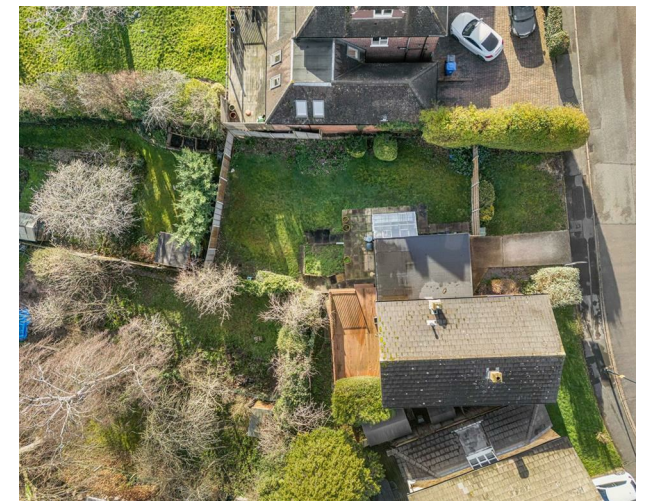
Detached family home

Driveway parking

Local amenities close by

Within catchment to outstanding schools

These particulars are intended as a guide and must not be relied upon as statements of fact. Your attention is drawn to the Important Notice on the last page.





# Belmont Drive, Maidenhead, SL6

Main House Area = 1337 sq ft / 124.1 sq m

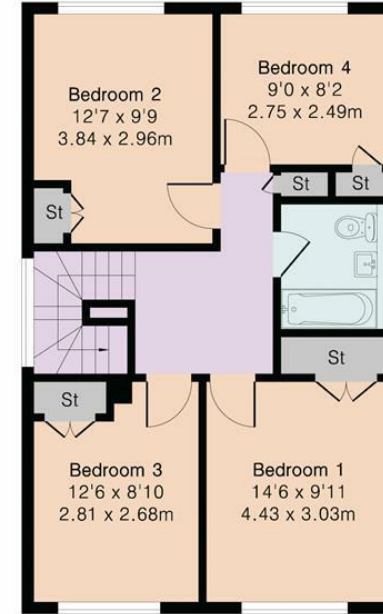
Garage Area = 166 sq ft / 15.4 sq m

Total Area = 1503 sq ft / 139.5 sq m

For Identification only - Not to scale



Ground Floor



First Floor

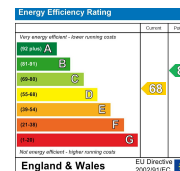


Floor plan produced in accordance with RICS Property Measurement 2nd Edition. Although Pink Plan Ltd ensures the highest level of accuracy, measurements of doors, windows and rooms are approximate and no responsibility is taken for error, omission or misstatement. These plans are for representation purposes only and no guarantee is given on the total square footage of the property within this plan. The figure icon is for initial guidance only and should not be relied on as a basis of valuation.



42 Queen Street, Maidenhead,  
SL6 1HZ  
maidenhead@coopersresidential.co.uk

CoopersResidential.co.uk



Important Notice: These particulars, whilst believed to be accurate are set out as a general outline only for guidance and do not constitute any part of an offer or contract. Intending purchasers should not rely on them as statements or representation of fact, but must satisfy themselves by inspection or otherwise has the authority to make or give any representation or warranty in respect of the property.