



1 Bedroom
Thatched Cottage
in Dauntsey

£1,195 Per Month

59 Dauntsey
Chippenham
SN15 4HN



Victoria Allman
lettings

- Characterful thatched cottage with lots of period features
- Beautiful rural location
- Flexible loft space for working from home and storage
- Large lawned garden with stunning open views
- Off-street parking
- EPC Rating E
- Council Tax Band D (Wiltshire)
- Available late February



1



1



1



E

SUMMARY

A hugely characterful one-bedroom thatched cottage in the popular hamlet of Dauntsey, near to Great Somerford. Available unfurnished from late February.

DESCRIPTION

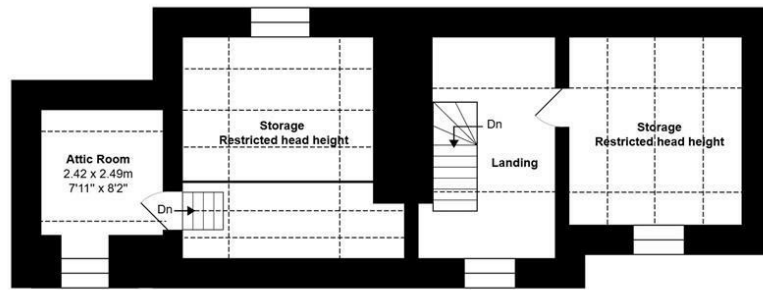
59 Dauntsey is a delightful cottage with a recently refurbished thatched roof and lots of period features including exposed beams and original fireplaces. The accommodation is largely spread over the ground floor and includes a good size kitchen/dining room complete with fitted units and an integrated electric oven and hob, and a cosy living room with a central stone fireplace. The hall leads on to a dual-aspect double bedroom and a well-equipped bathroom which has a shower over the bath. The cottage also offers flexible living space upstairs including two attic rooms with windows, both of which could be used as an office; one of the two attic rooms is accessed by a fixed ladder. There is also considerable loft storage space.

Externally, the cottage benefits from a good-size drive with ample parking for two or three cars, and a large, impressive garden which stretches out to the rear of the property. There are stunning views of the surrounding Wiltshire countryside.

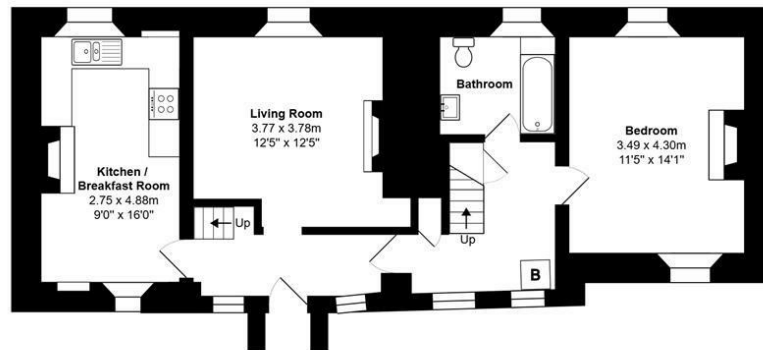
SITUATION

The small hamlet of Dauntsey offers beautiful country walks and rides throughout the Vale of Dauntsey including along the nearby Wilts & Berks Canal. The village is home to a primary school, church and the impressive Dauntsey Park House. A local village shop and The Volunteer Inn can be found in the neighbouring village of Great Somerford, and the hugely popular Somerford Arms gastro pub is located in Little Somerford, a couple of miles away. Both Chippenham and the historic market town of Malmesbury provide a broad range of amenities, including various supermarkets and well-regarded secondary schools. Dauntsey is located six miles away from both junction 17 and 16 of the M4 motorway for convenient travel to regional centres including Bath, Bristol and Swindon. There are also regular fast mainline train services to London Paddington and elsewhere from Chippenham and Swindon.





Attic Floor
Area: 46.6 m² ... 502 ft²



Ground Floor
Area: 68.3 m² ... 736 ft²
Total Area: 121.4 m² ... 1307 ft²
All measurements are approximate and for display purposes only

DIRECTIONS

From the centre of Great Somerford, next to The Volunteer Inn, head east on Dauntsey Road and then Church Lane for around 2 miles. The road will take you into Dauntsey and then over the M4 motorway. After passing The Cowsheds Hotel on your right, the property is located on the left hand side.

Postcode: SN15 4HN

What3Words:
///shame.overcomes.bride

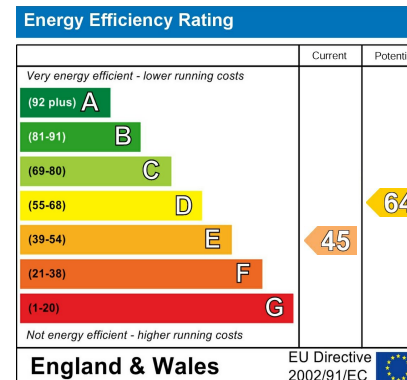
CONTACT

lettings@victoriaallman.co.uk
01666 338866

www.victoriaallman.co.uk

REQUIRED INFORMATION

We understand the property has mains electricity, water, drainage and oil fired central heating. Ultrafast broadband is available in this area; mobile coverage is classed as good outdoors and in-home – please check the Ofcom website for more information. We are not aware of any issues of potential impact including building safety, planning permission or proposed developments, and other restrictions. We are aware that the property has flooded in the last 5 years.



Victoria Allman
lettings