



Guide Price
£550,000

Freehold

4x  2x  2x 

**Lambyn Croft, Horley,
Surrey, RH6**

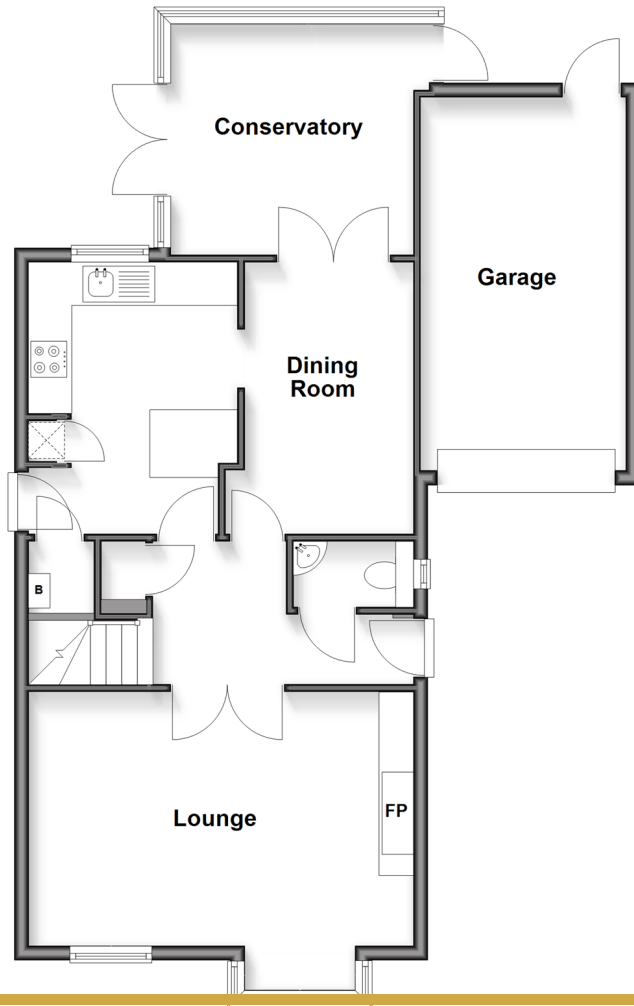
OVER 60?

Secure this property
for up to **59% less!**

cubitt & west
Helping you move forwards

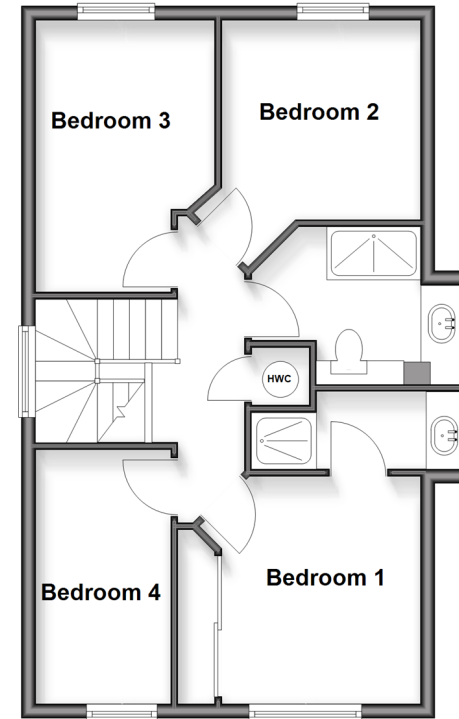
Ground Floor

Approx. 78.6 sq. metres (846.3 sq. feet)



First Floor

Approx. 52.3 sq. metres (563.1 sq. feet)



Accommodation

GROUND FLOOR

Entrance Hallway

Lounge: 17'6 x 13'7 (5.34m x 4.14m)

Cloakroom

Kitchen: 12'4 x 9'3 (3.76m x 2.82m)

Dining Room: 12'9 x 7'9 (3.89m x 2.36m)

Conservatory: 11'6 x 10'7 (3.51m x 3.23m)

FIRST FLOOR

Landing

Bedroom 1: 10'4 x 9'10 (3.15m x 3.00m)

En Suite Shower Room

Bedroom 2: 9'2 x 9'1 (2.80m x 2.77m)

Bedroom 3: 12'5 x 8'0 (3.79m x 2.44m)

Bedroom 4: 11'7 x 6'2 (3.53m x 1.88m)

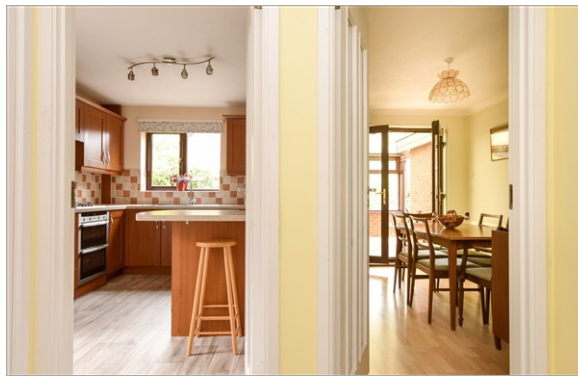
Shower Room: 11'7 x 6'2 (3.53m x 1.88m)

OUTSIDE

Driveway

Rear Garden

Garage



Main features

- No chain
- AI Staged images
- Large driveway & garage with additional conservatory
- En-suite shower room & downstairs cloakroom
- Located in a quiet cul-de-sac close to local park & school



Nearest Schools

Primary Schools: Yattendon School 0.6 miles, Manorfield Primary and Nursery School 1.0 miles, Meath Green Junior School 1.1 miles

Secondary Schools: Oakwood School 0.5 miles



Transport Information

Train Stations: Horley 0.9 miles, Salfords 1.7 miles, Gatwick Airport 1.7 miles



Address

Lambyn Croft, Horley, Surrey, RH6



Directions

For directions to this property please contact us.



cubitt&west
Helping you move forwards

Call Horley Branch 01293 785338 ■ cubittandwest.co.uk



- Legal advice should be taken to verify fixtures/fittings, planning, alterations and/or lease details
- Appliances & services are untested, dimensions are approximate and floor plans are not to scale
- Through a Homewise Home For Life Plan people aged 60+ can secure this property for up to 59% less, by purchasing a Lifetime Lease



20811164/20260124/TP/SI