

whiteley helyar



505 ft²



bedroom



shower room



resident's
permit
parking

Guide Price £265,000

Flat 10, The Old Walcot School, Guinea Lane, Bath, BA1 5NB

A wonderful period conversion apartment, over two floors, forming part of an old school building in the centre of the city, with no onward chain. Sitting adjacent to Hedgemoor Park, the flat offers modern, open plan living, with a spiral staircase connecting the reception and bedroom spaces.

ACCOMMODATION

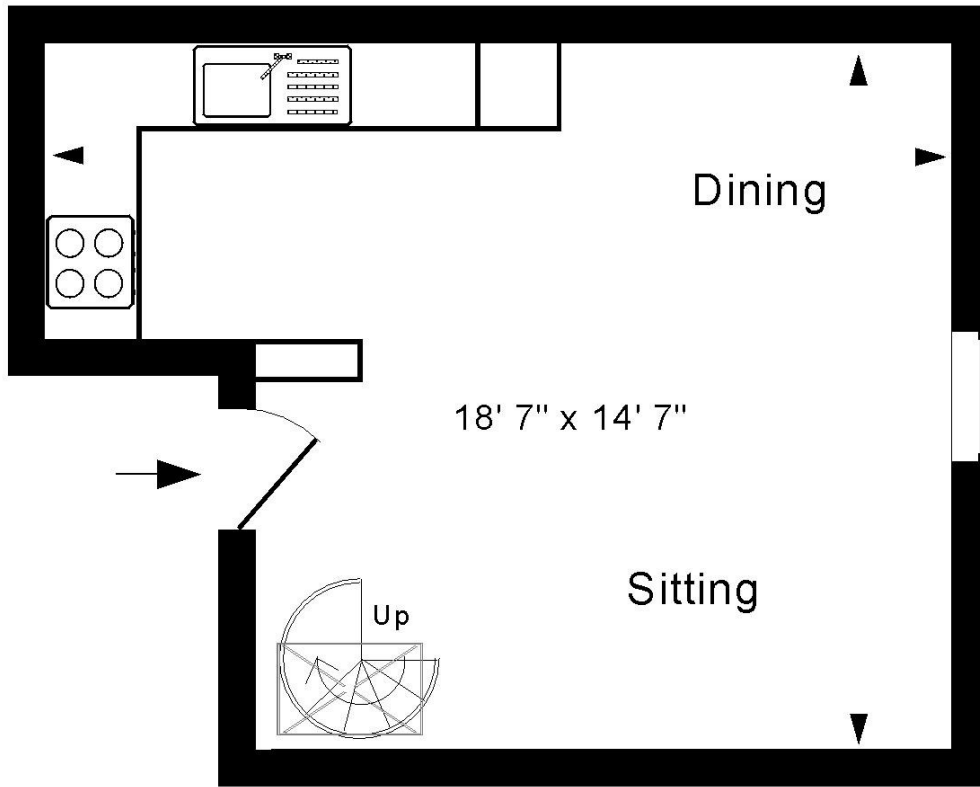
Open plan sitting/dining/kitchen with feature window overlooking Hedgemoor Park
Double bedroom with bespoke fitted wardrobes
Modern shower room

LOCATION

The apartment occupies a superb location, towards the end of Vineyards, most conveniently located just a couple of minutes walk from Milson Street, in the very centre of Bath. The extensive range of shops, amenities, parks, sports facilities and transport links that Bath has to offer are within easy walking distance.

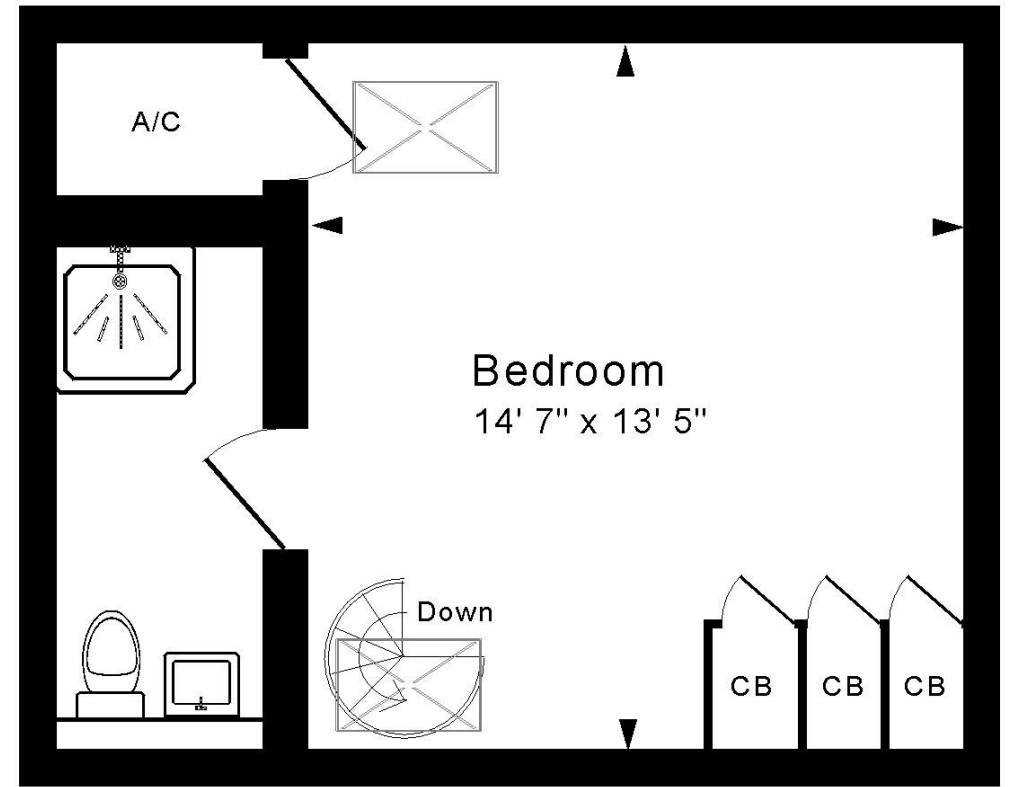






Third Floor

Approx. Gross Internal Floor Area 505 Sq. Ft. / 47 Sq. M
 Includes Conservatories. Excludes Garages, Porches etc. unless stated
 For identification purposes only. Not to scale. Copyright Jemesis Ltd 2026
 Drawing Number: 172-0895
 Flat 10, The Old Walcot School, Guinea Lane, Bath, BA1 5NB.



Top Floor



Tenure: Leasehold
Lease length: 999 yrs from 2001
Service charge: approx. £1800 per annum
Council Tax Band: 'B' - £1,808.54

