



# FORMER SOUTH CHURCH

COLDWELLS ROAD, CRIEFF, PH7 4BB



## FORMER SOUTH CHURCH, COLDWELLS ROAD, CRIEFF, PH7 4BB

A former church enjoying a central location in the ever popular town of Crieff, with planning permission for conversion into 9 apartments.

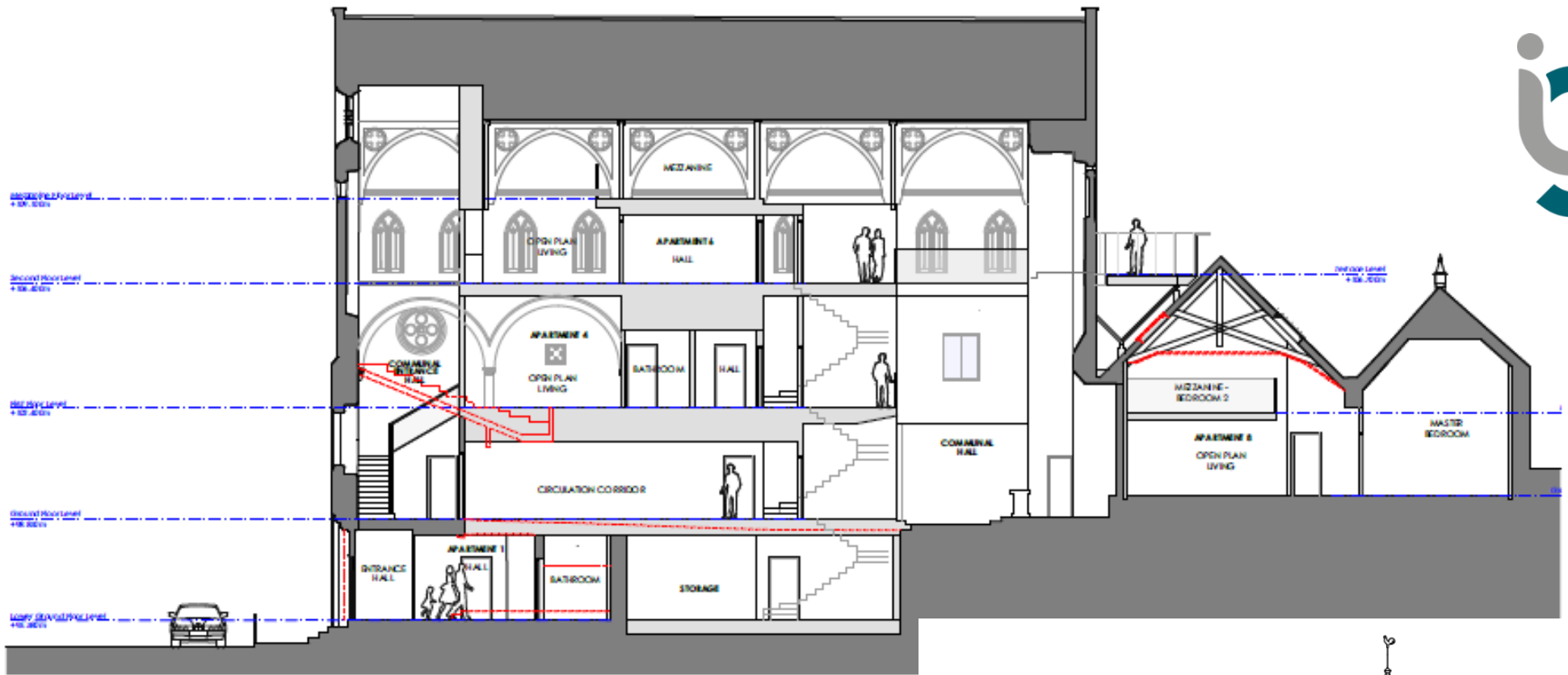
- ◆ 7 X TWO BEDROOM APARTMENTS
- ◆ THREE BEDROOM PENTHOUSE APARTMENT
  - ◆ CHURCH TOWER APARTMENT
  - ◆ LIFT ACCESS TO ALL FLOORS
  - ◆ RESIDENTS COMMUNAL AREAS
- ◆ TOP FLOOR WRAP AROUND RESIDENTS BALCONY & GARDEN
- ◆ STUNNING VIEWS TOWARDS GLENTURRET
- ◆ 5 CAR PARKING SPACES AVAILABLE

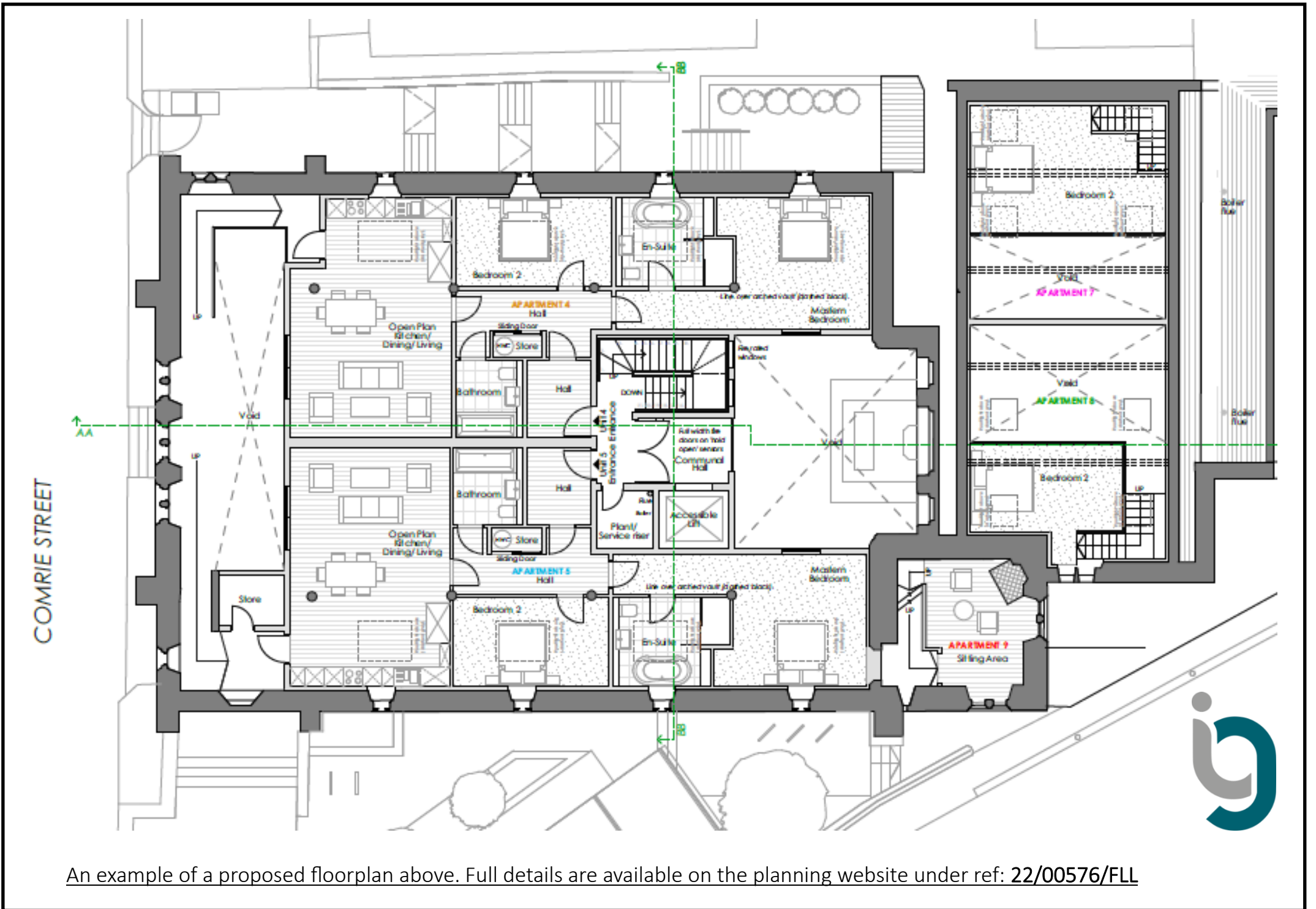
Planning info available from the Perth & Kinross planning portal:

<https://planningapps.pkc.gov.uk/online-applications/simpleSearchResults.do?action=firstPage>

**Viewing** Strictly by appointment - Irving Geddes - 01764 653771.







An example of a proposed floorplan above. Full details are available on the planning website under ref: [22/00576/FLL](#)



These particulars are believed to be correct, but their accuracy is not guaranteed and they do not form part of any contract. They are provided as a general guide and may be subject to change. All measurements are approximate only.





**Crieff**  
25 West High Street, PH7 4AU  
Tel: 01764 653771

**Comrie**  
1 Drummond Street, PH6 2DW  
Tel: 01764 670325

**Aberfeldy**  
6 The Square, PH15 2DD  
Tel: 01887 822722