



27 Borrowdale Close, Gunthorpe, Peterborough
£300,000

 **NEWTON FALLOWELL**

27 Borrowdale Close

Gunthorpe, Peterborough

This impressive detached chalet bungalow occupies a desirable CORNER PLOT POSITION and hosts THREE DOUBLE BEDROOMS (including both UPSTAIRS & DOWNSTAIRS BEDROOMS), a GARAGE and DRIVEWAY PARKING FOR MULTIPLE VEHICLES, whilst being sold with NO ONWARD CHAIN. The property opens into a welcoming hallway with convenient access to the principal living spaces, including a generous lounge to the front aspect that provides a comfortable setting for relaxation and entertaining. The well-appointed kitchen diner is located to the rear and is fitted with a range of base and wall units, space and plumbing for a washer dryer and range cooker, and ample space for a dining table. The ground floor also features two double bedrooms and a modern shower room with contemporary fixtures, including a shower cubicle, wash basin, and WC. Stairs rise to the first floor from the kitchen diner, where a spacious third double bedroom offers flexibility for use, complemented by an upstairs bathroom with bath with a shower over, wash basin, and WC. The property further benefits from a garage and driveway parking for multiple vehicles, gardens to front, side and rear, whilst being situated in a sought-after residential area, the bungalow is well placed for access to local amenities, including shops, schools, medical facilities, and public transport links.

Council Tax band: C

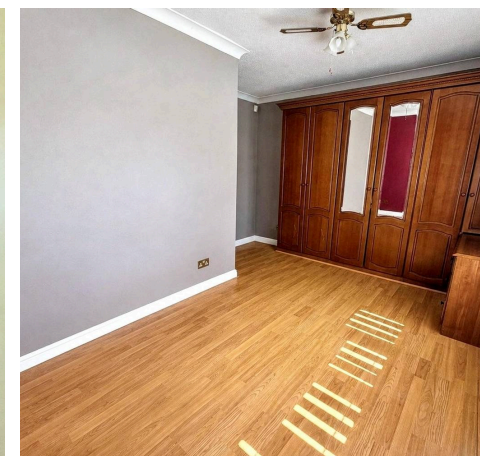
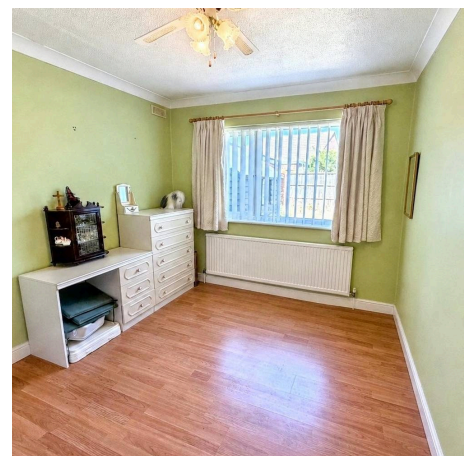
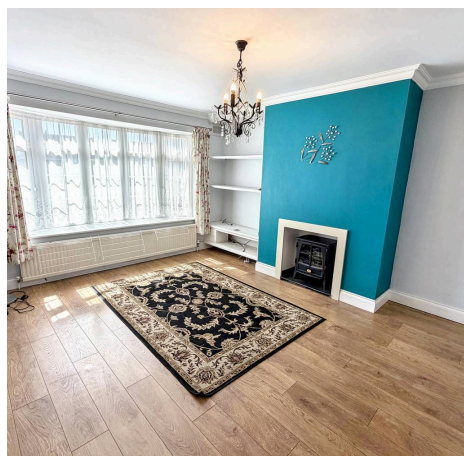
Tenure: Freehold

EPC Energy Efficiency Rating: C

EPC Environmental Impact Rating: C



NEWTON FALLOW





Entrance Hall

Lounge

15' 0" x 13' 1" (4.58m x 3.99m)

Kitchen Diner

17' 7" x 12' 0" (5.36m x 3.65m)

Bedroom 2

14' 1" x 8' 4" (4.30m x 2.55m)

Bedroom 3

11' 11" x 9' 4" (3.62m x 2.84m)

Shower Room

7' 5" x 5' 8" (2.27m x 1.72m)

Landing

Bedroom 1

14' 2" x 13' 3" (4.31m x 4.05m)

Family Bathroom

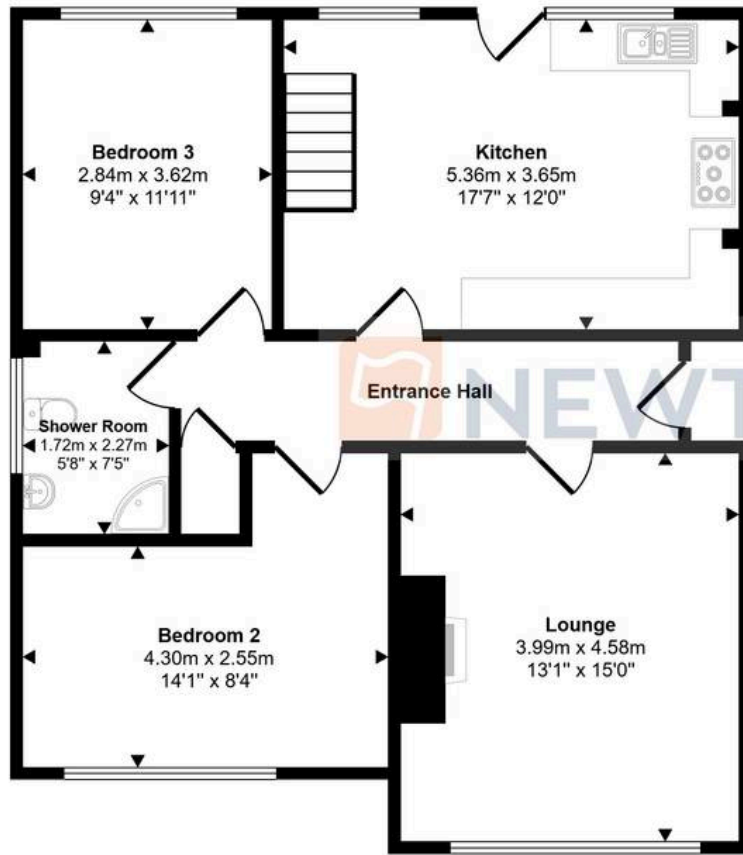
11' 8" x 7' 8" (3.56m x 2.34m)

Garage

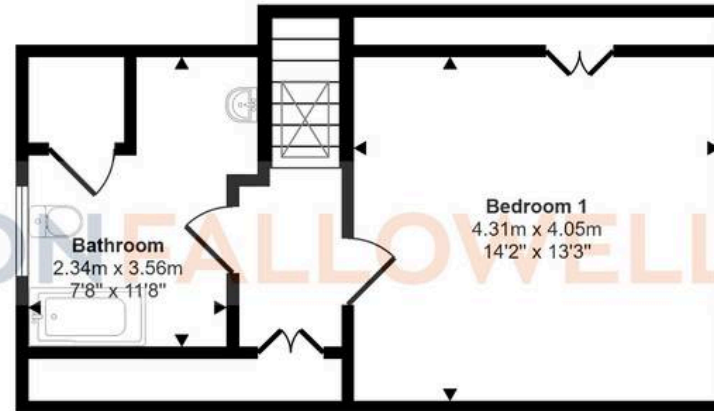
17' 0" x 8' 6" (5.19m x 2.59m)



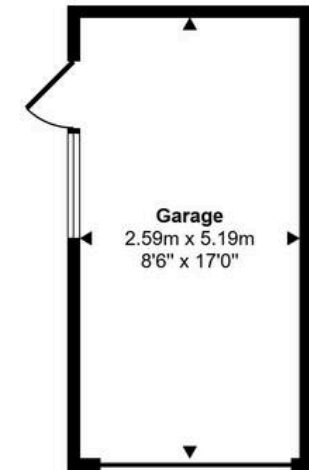
Approx Gross Internal Area
126 sq m / 1352 sq ft



Ground Floor
Approx 76 sq m / 819 sq ft



First Floor
Approx 36 sq m / 388 sq ft



Garage
Approx 13 sq m / 145 sq ft

This floorplan is only for illustrative purposes and is not to scale. Measurements of rooms, doors, windows, and any items are approximate and no responsibility is taken for any error, omission or mis-statement. Icons of items such as bathroom suites are representations only and may not look like the real items. Made with Made Snappy 360.

Newton Fallowell - Peterborough

Newton Fallowell Estate Agents, 11 Skaters Way - PE4 6NB

01733 511225 · peterborough@newtonfallowell.co.uk · newtonfallowell.co.uk/peterborough