

# BRUNTON

---

## RESIDENTIAL



**ALNMOUTH COURT, NEWCASTLE UPON TYNE, NE5**

**Offers Over £180,000**



**BRUNTON**  
RESIDENTIAL





# BRUNTON

RESIDENTIAL



# BRUNTON

---

## RESIDENTIAL



Attractive three-bedroom townhouse offering well-proportioned accommodation, creating a versatile and practical home suited to a variety of buyers. Combining modern interiors with a thoughtful layout, the property provides bright living spaces and excellent bedroom accommodation throughout.

The ground floor centres around a welcoming living room and a spacious kitchen/diner spanning the width of the property, creating an ideal environment for both everyday living and entertaining. Three bedrooms are arranged across the upper floors, including an impressive principal bedroom occupying the entire second floor with built-in storage and Velux windows. Externally, the property benefits from a private enclosed rear patio, providing a low-maintenance outdoor space for relaxing and socialising.

Alnmouth Court enjoys a convenient location within Newcastle, offering excellent access to local amenities, transport links, schools and surrounding green spaces. Its well-connected position makes it an appealing choice for first-time buyers, professionals and growing families alike.

# BRUNTON

---

## RESIDENTIAL



# BRUNTON

---

## RESIDENTIAL

The internal accommodation comprises: an entrance hall with stairs to the first floor and a convenient ground-floor WC. To the left of the entrance hall is a welcoming living room that overlooks the front of the property and has useful storage under the stairs. To the rear of the living room, a door opens into a well-equipped kitchen/diner that spans the width of the property. The kitchen is fitted with a modern range of wall and base units and integrated appliances. A further door gives access from the kitchen/diner to the rear patio.

The first-floor landing gives access to two bedrooms, one with fitted wardrobes, alongside a family bathroom which is tiled with a shower over the bath.

A second set of stairs leads to the second floor, where a master bedroom spans the entirety of the floor. This bedroom enjoys built-in storage and Velux windows.

Externally, the property enjoys a rear patio area that is enclosed with timber fencing, creating the ideal space for everyday family life and entertainment.



# BRUNTON

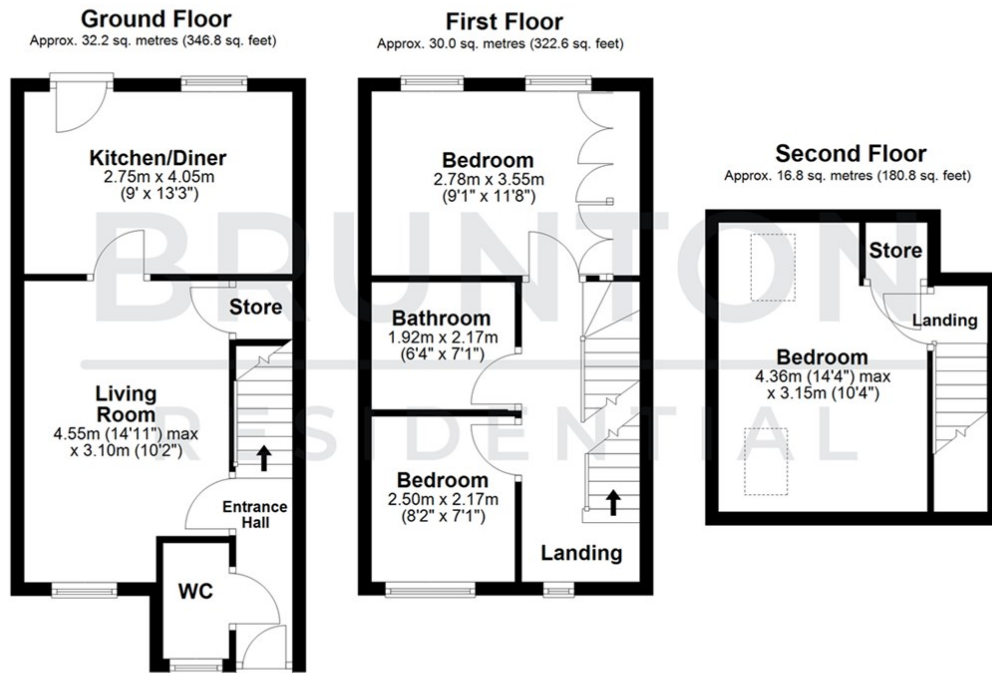
## RESIDENTIAL

TENURE : Freehold

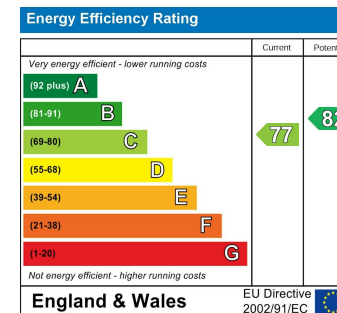
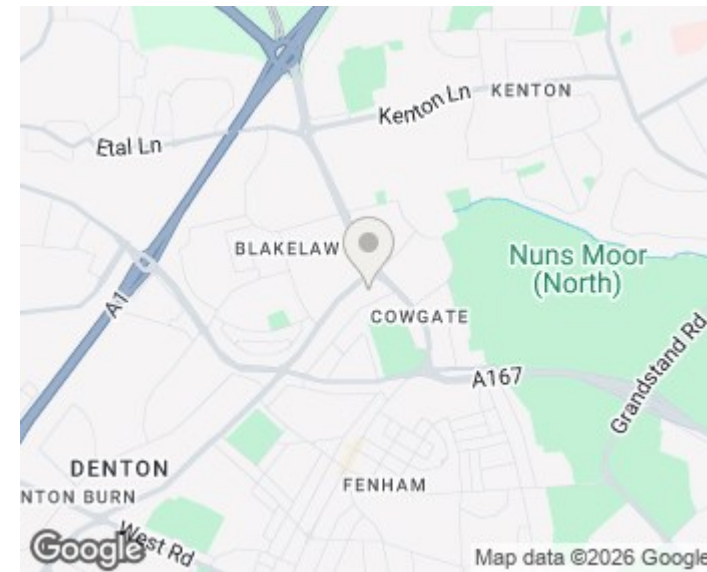
LOCAL AUTHORITY : Newcastle CC

COUNCIL TAX BAND : B

EPC RATING : C



Total area: approx. 79.0 sq. metres (850.2 sq. feet)



England & Wales

England & Wales