



Maple Mews | Maida Vale | London | NW6 5UZ

Asking price £699,950

 **DRAPER**
LONDON

Key features

- Freehold Mews House
- 3 spacious bedrooms
- 2 modern bathrooms
- Open plan kitchen reception
- 872 sq ft of space
- Arranged over three floors
- Located in Maple Mews
- Close to amenities

Description

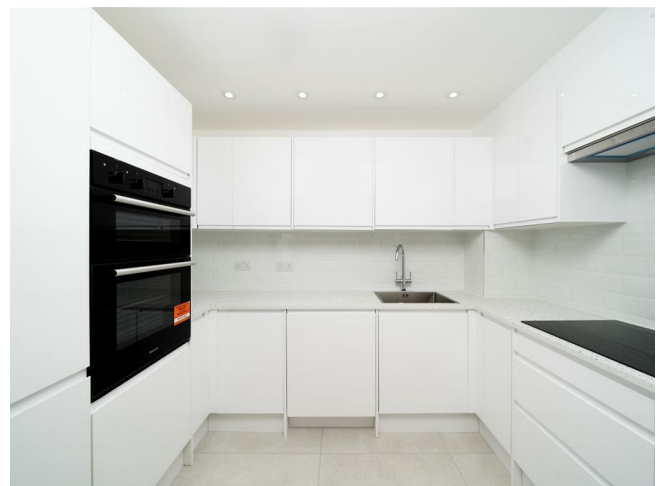
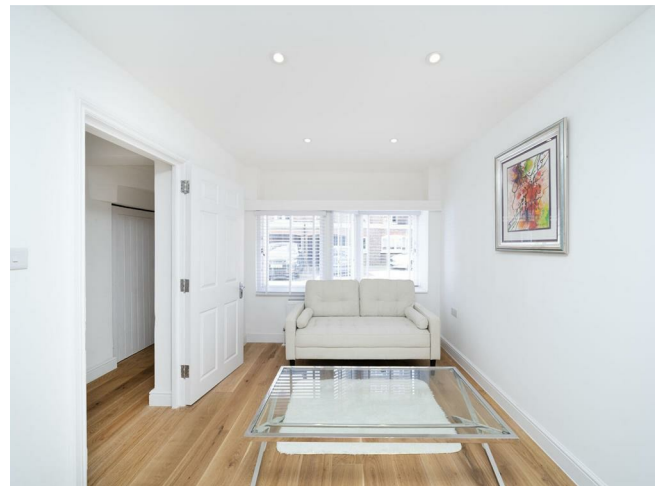
Located in a gated mews is this newly converted three bedroom house, offering a perfect blend of comfort and modern living, spanning an impressive 872 square feet.

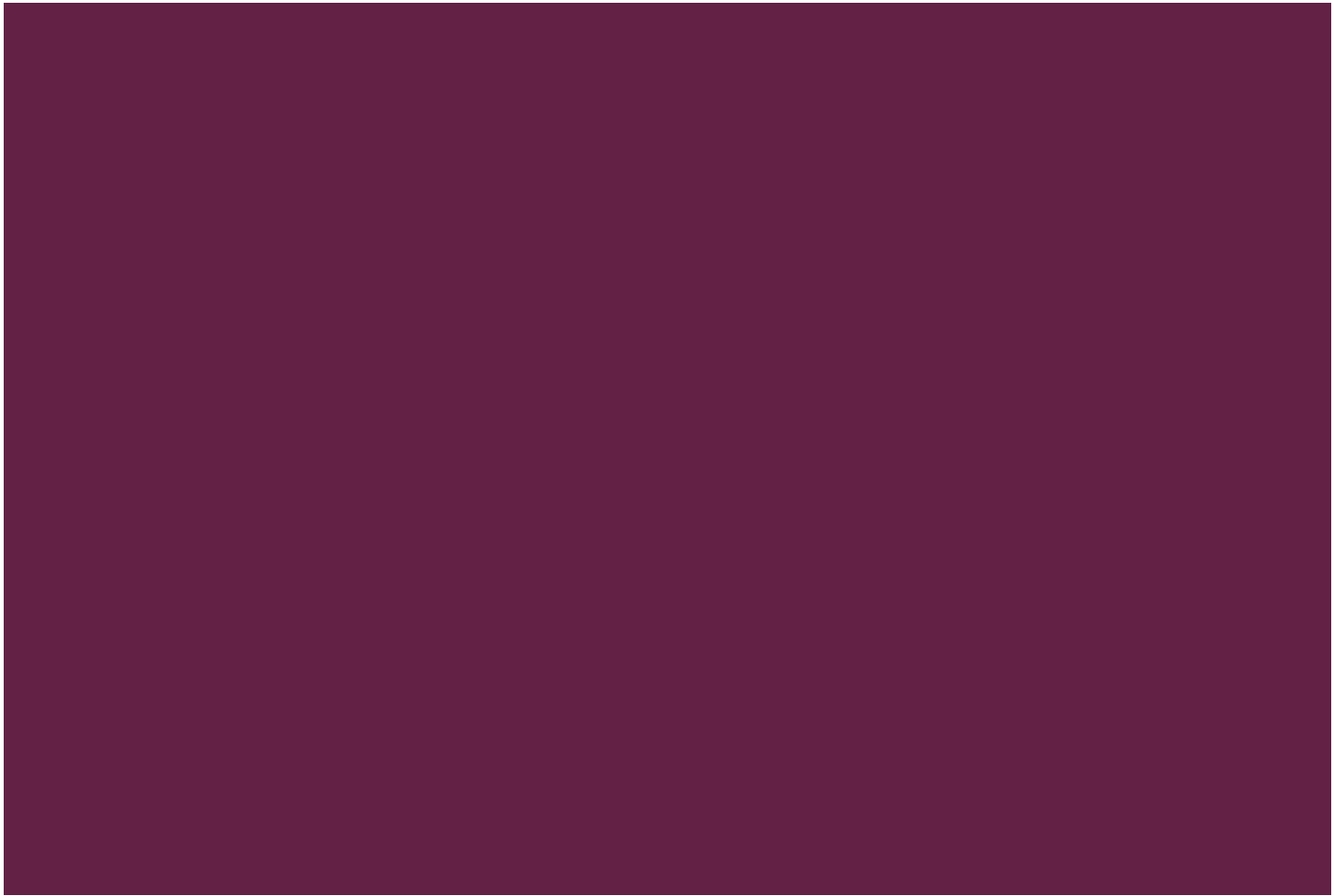
Set over three floors and meticulously designed throughout the house comprises a reception room with a semi open plan fully fitted kitchen on the ground floor. On the first floor you will find a Jack and Jill en-suite bathroom and a large principal bedroom with a Juliet balcony. The second floor comprises a second double bedroom, a family shower room and a third bedroom.

The location in Maple Mews is particularly appealing, offering a peaceful residential setting while still being within easy reach of the vibrant amenities that London has to offer. The house is a short walk away from the vast array of shops, restaurants and cafes on Elgin Avenue and Kilburn High Road as well as the green open space of Paddington recreation ground.

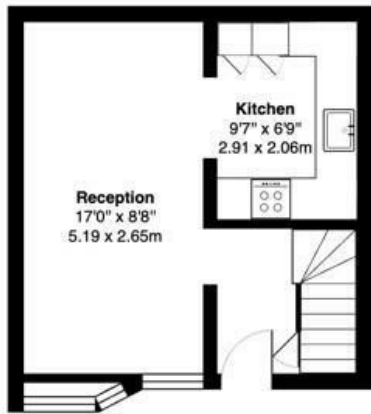
There are extensive transport links within easy reach with Kilburn Park station (Bakerloo line) just 0.3 miles away, Maida Vale station (Bakerloo line) 0.4 miles away and Queen's Park station (Bakerloo and London Overground lines) 0.8 miles away.

Directions

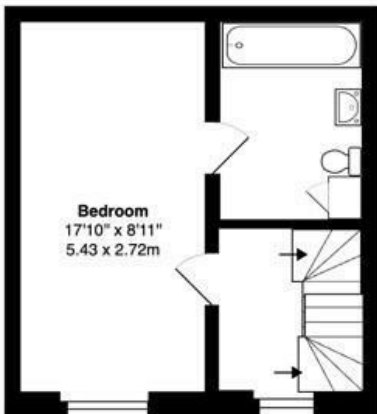




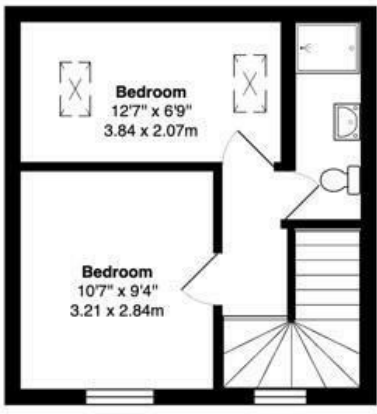
Floor plans



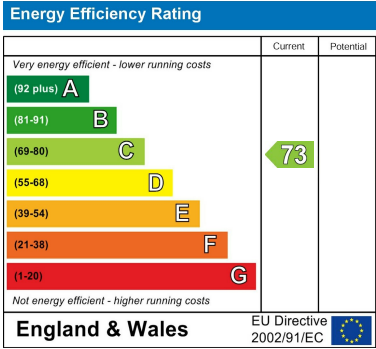
Ground Floor



First Floor



Second Floor



Council Tax Band **G** EPC Rating **C**



24 Bristol Gardens
London
W9 2JQ
hello@draperlondon.com