



KAREN MACHIN
POWERED BY
exp UK
Your Personal Estate Agent



Montfort Road, Chatham, ME5 9HA

Offers Over £350,000

🛏️ 3 🚿 1 🚗 2



Offers Over £350,000 | No Onward Chain | Freehold

A home that truly adapts to your lifestyle.

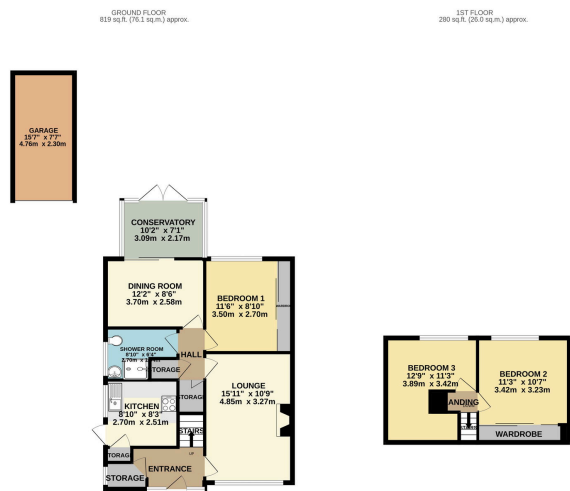
Situated in a sought-after residential area of Walderslade, this beautifully versatile three-bedroom bungalow-style home offers space, flexibility and comfort in equal measure – ideal for families, downsizers, or multi-generational living. Offered with no onward chain, this is an opportunity to move with confidence and ease. From the moment you walk through the door, the home feels welcoming and thoughtfully arranged. The bright and comfortable living room is perfect for relaxing evenings, while the separate dining room creates a wonderful space for family meals, entertaining friends, or special occasions. Flowing directly from the dining room is the conservatory with radiator, providing a sunny, cosy space to enjoy the garden all year round – perfect as a second sitting area, breakfast spot, or reading retreat. The modern fitted kitchen is thoughtfully designed with plenty of room for an American-size fridge freezer, dishwasher, and washing machine, and also features an electric integrated oven and hob. A particularly valuable feature is the ground floor bedroom, ideal for single-level living, accommodating guests, or creating a home office. Upstairs, two further well-proportioned bedrooms provide flexibility for children, hobbies or visiting family.

- Double glazed throughout
- Gas central heating via combi boiler
- Freehold
- Council Tax Band C
- Local Authority: Tonbridge & Malling

This bungalow has its own private driveway (no shared access!) Energy Performance Certificate (EPC): D

The rear garden offers a private space to relax or entertain. To the side of the property, gated access opens to a generous area in front of the garage. There is also a single garage with power and lighting. While every effort is made to ensure the accuracy of the information provided, all measurements, distances, and details are approximate and should be independently verified. No responsibility is accepted for any errors or omissions. In accordance with the Estate Agents Act 1979, we disclose that the selling agent has a financial interest in this property. This information does not constitute a contract or part of a contract.





TOTAL FLOOR AREA: 1008 sq. ft. (92.1 sq. m.) approx.
 All dimensions are given in feet and inches and are approximate and no responsibility is taken for any errors or omissions. The plans are for information purposes only and do not constitute an offer of any particular product. The materials, finishes and specifications shown have not been tested and no guarantee as to their quality or efficiency can be given.
 © 2024 Karen Machin



- Three-bedroom bungalow-style home – ground floor bedroom ideal for single-level
- Separate dining room – perfect for family meals or entertaining
- Two further bedrooms upstairs – flexible for family or hobbies
- Large coat and shoe cupboard – excellent practical storage
- Private rear garden – great for relaxing or entertaining
- No onward chain – move quickly and with confidence
- Conservatory with radiator – use all year round as additional living space
- Gated side area – can be used as additional driveway parking or extra garden
- Single garage with power and lighting – versatile for parking, storage, or workshop
- KM1186



Energy Efficiency Rating		
	Current	Potential
Very energy efficient – lower running costs		
(92 plus) A		
(81-91) B		
(69-80) C		78
(55-68) D		
(39-54) E	52	
(21-38) F		
(1-20) G		
Not energy efficient – higher running costs		
England & Wales	EU Directive 2002/91/EC	

📞 07455102429

✉️ karen.machin@exp.uk.com

🌐 karenmachin.exp.uk.com

