

72 The Drive

Hove, BN3 3PE

Guide price £300,000



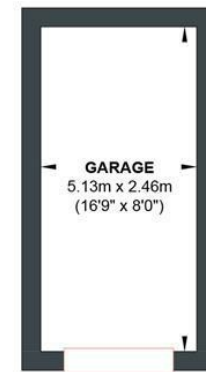
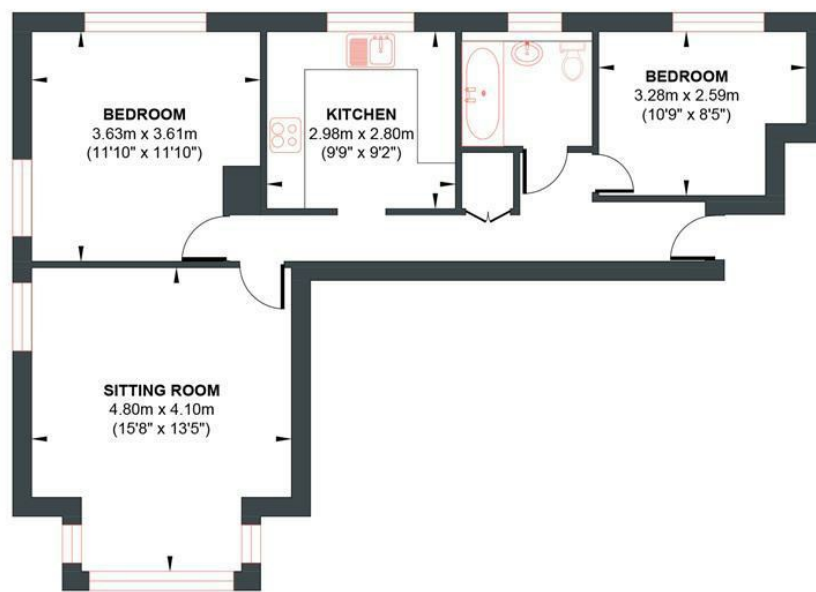
- Two Double Bedrooms
- Separate Fitted Kitchen
- Ample Storage
- Communal Rear Garden
- SHARE OF FREEHOLD
- Bright & Spacious Living Room
- White Suite Bathroom
- Gas Central Heating
- GARAGE
- Short Walk To Seafront, Shops & Station

| Energy Efficiency Rating | | |
|---|-------------------------|-----------|
| | Current | Potential |
| Very energy efficient - lower running costs | | |
| (92 plus) A | | |
| (81-91) B | | |
| (69-80) C | | |
| (55-68) D | | |
| (39-54) E | | |
| (21-38) F | | |
| (1-20) G | | |
| Not energy efficient - higher running costs | | |
| | 75 | 75 |
| England & Wales | EU Directive 2002/91/EC | |



THE DRIVE

Approx. Gross Internal Floor Area (Excluding Garage) 60.25 sq m / 648.52 sq ft
 Illustration for identification purposed only, measurements are approximate, not to scale.



First Floor
 Approximate Floor Area
 648.52 sq ft
 (60.25 sq m)

GARAGE
 Approximate Floor Area
 135.84 sq ft
 (12.62 sq m)

Foster & Co and their clients give notice that:
 These sales particulars do not constitute any part of an offer of contract and are for guidance for prospective purchases only and should be not relied upon as a statement of fact.
 We are not to be held responsible for material information that has not been given to us by our client at the time of marketing.
 All measurements are approximate

