

2 Greens Meadow  
Bridport

# 2 Greers Meadow

Bridport  
Dorset DT6 5FS

A brand new three bedroom detached bungalow with a double garage and generous garden situated in a bespoke private development.



- Bespoke private development
- Three bedroom detached bungalow
  - Double garage and parking
  - Sea views

Guide Price **£750,000**

Freehold

Bridport Sales  
01308 422092  
[bridport@symondsandsampson.co.uk](mailto:bridport@symondsandsampson.co.uk)



## THE DWELLING

A brand new three bedroom detached bungalow with a double garage and generous garden situated in a small bespoke private development in a quiet location enjoying some sea views. Finished to an excellent standard and boasting many modern amenities including an air source heat pump, under floor heating and solar panels.

## ACCOMMODATION

The property is arranged with the majority of the sleeping accommodation to one side and the living spaces to the other. The kitchen/dining room is the hub of the home and benefits from sea views in the distance. The contemporary kitchen is fitted with a range of wall and base units with a central island and opens into the dining area with bi-fold doors and skylights, flooding the accommodation with ample natural light. The sitting room is located just off the kitchen/dining room with bi-folding doors onto the paved terrace. There are three double bedrooms, the principal of which benefitting from an en-suite shower room. The property also has a utility room, family bathroom, and a separate WC.

## OUTSIDE

The bungalow is set in a generous plot with a large driveway providing ample parking and access to the double garage. The gardens are predominantly laid to lawn with a generous paved terrace adjoining the living areas. The sea views will be able to be enjoyed from various locations of the garden.

## SERVICES AND LOCAL AUTHORITY

Mains gas, electricity, drainage and water. Air source heat pump.

Local Authority- Dorset Council

Broadband connected, speed as yet unknown

## DIRECTIONS

What3Words///braked.rates.blotting.

## MEASUREMENTS

Kitchen/Dining Room: 7.74m x 4.55m

Utility Room: 3.42m x 2.17m

Sitting Room: 5.06m x 4.57m

Bedroom 1: 3.46m x 3.28m

Ensuite: 2.21m x 2.10m

Bedroom 2: 3.55m x 3.43m

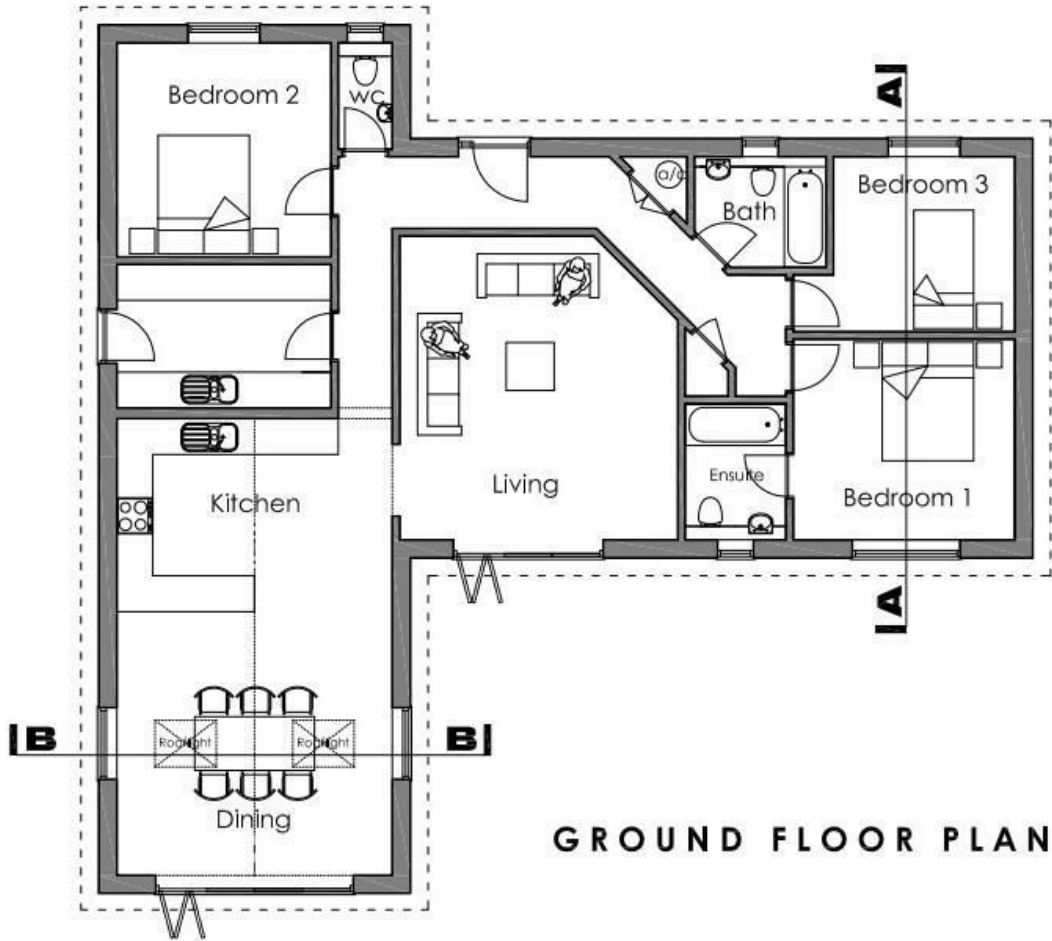
Bedroom 3: 3.46m x 2.95m

Bathroom: 2.26m x 1.84m

## SITUATION

Bridport is a bustling and vibrant market town is a gateway to the Jurassic World Heritage coast at nearby West Bay. It has a variety of shops, supermarkets, public houses and restaurants catering for a range of tastes, all within walking distance.





BRI/DM/REV240326



01308 422092

bridport@symondsandsampson.co.uk  
Symonds & Sampson LLP  
23, South Street,  
Bridport, Dorset DT6 3NU



Important Notice: Symonds & Sampson LLP and their Clients give notice that: 1. They have no authority to make or give any representations or warranties in relation to the property. These particulars do not form part of any offer or contract and must not be relied upon as statements or representations of fact. 2. Any areas, measurements or distances are approximate. The text, photographs and plans are for guidance only and are not necessarily comprehensive. It should not be assumed that the properties have all necessary planning, building regulation or other consents and Symonds and Sampson LLP have not tested any services, equipment of facilities. 3. We have not made any investigation into the existence or otherwise of any issues concerning pollution of the land, air or water contamination and the purchaser is responsible for making his/her own enquiries in this regard. 4. The property is sold subject to and with the benefit of all existing wayleaves, easements and rights of way whether public or private, specifically mentioned or not. The vendors shall not be required to define any such rights, privileges or advantages.

**SALES | LETTINGS | AUCTIONS | FARMS & LAND | COMMERCIAL | NEW HOMES | PLANNING & DEVELOPMENT**