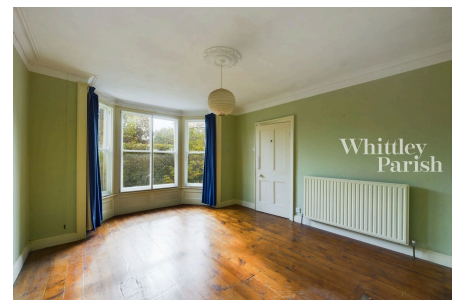


## London Road, Attleborough, NR17 2DJ

Guide Price £475,000 - £500,000

4 1 3



This generous four bedroom detached Edwardian home is situated in the popular market town of Attleborough and benefits from four double bedrooms, three reception rooms, large studio, off road parking and large plot.

## Key Features

- \* GUIDE PRICE £475,000 - £500,000 \*
- Period Features
- Approximately 0.22 Acres
- Studio
- Off Road Parking
- Three Reception Rooms
- Four Double Bedrooms
- Sought After Location
- Work Required
- Cellar

