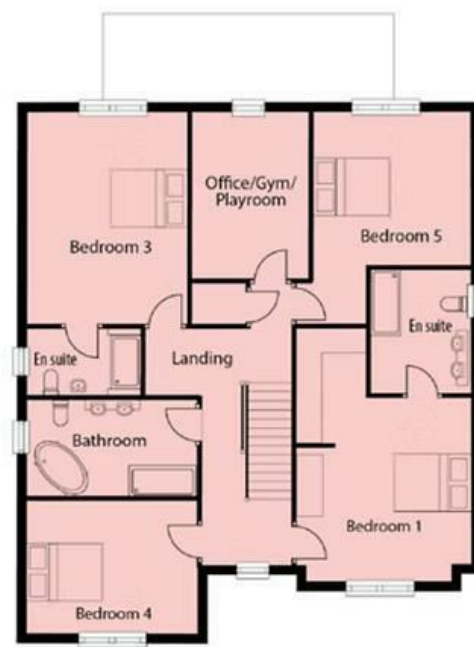




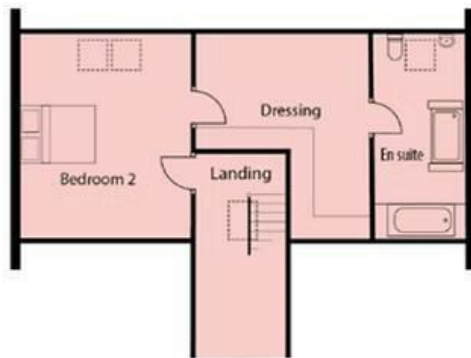
Ground Floor

	Metric	Imperial
Lounge	4.410m x 5.452m	14'5" x 17'10"
Study	4.410m x 2.463m	14'5" x 8'11"
Kitchen/Family/Dining	9.360m x 7.835m	30'8" x 25'8"
Utility Room	2.162m x 4.195m	7'11" x 13'9"
WC	2.162m x 4.195m	7'11" x 3'11"
Garage	6.638m x 4.500m	21'7" x 14'6"



First Floor

	Metric	Imperial
Bedroom 1	4.574m x 6.700m	15'0" x 21'11"
En suite	2.587m x 3.325m	8'6" x 10'11"
Bedroom 3	4.190m x 5.497m	13'9" x 18'0"
En suite	2.962m x 1.775m	9'8" x 5'10"
Bedroom 5	4.113m x 5.510m	13'6" x 18'1"
Bedroom 4	4.423m x 3.476m	14'6" x 11'5"
Office/Gym/Playroom	3.107m x 4.234m	10'2" x 14'2"
Bathroom	4.423m x 2.486m	14'6" x 8'1"



Second Floor

	Metric	Imperial
Bedroom 2	4.410m x 5.375m	14'5" x 17'7"
Dressing	4.722m x 5.375m	15'6" x 17'7"
En suite	2.302m x 5.375m	7'6" x 17'7"



Liverpool Road, Hutton, Preston

Offers Over £824,950

***OPEN WEEKEND 11th & 12th April - Come and view this quality show home with luxury designer furniture and a very high specification

PART EXCHANGE CONSIDERED

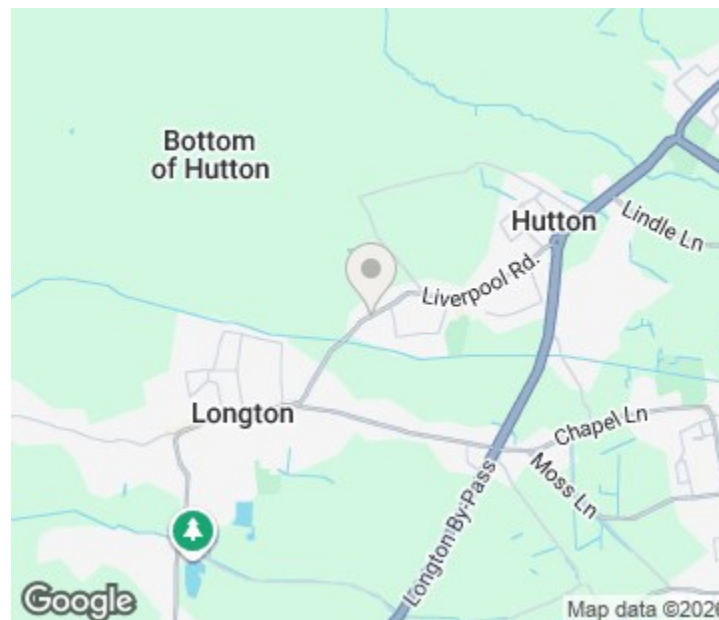
Last 2 remaining on this popular development

Ben Rose Estate Agents are delighted to present to the market Hutton Grange by Roxford Homes, an exclusive collection of luxurious five and six-bedroom executive homes, set within the sought-after village of Hutton, just outside Preston. Close to Longton Village and its amenities, as well as fantastic schools like Hutton Grammar School, this development is located in a truly prime area.

Designed for the discerning homeowner, these properties blend timeless elegance with cutting-edge modernity, offering an unrivaled living experience. Each home is a masterpiece of design and craftsmanship, featuring expansive, open-plan interiors that flow seamlessly into beautifully landscaped gardens through elegant bi-fold doors. Perfect for family life and entertaining, these versatile spaces provide the ultimate in comfort and sophistication. Each plot is equipped with advanced energy-efficient systems and solar panels, offering eco-conscious living while reducing energy bills. The combination of state-of-the-art technology with opulent design ensures a home that is both environmentally friendly and indulgently comfortable, boosted even further by underfloor heating throughout.

With The Ascot, this magnificent three-storey design is well equipped for families and entertaining guests. Its signature feature is a stunning open-plan kitchen incorporating generous living/dining space with a breakfast island alongside the Neff appliances, Quartz countertops, and custom cabinetry. Bi-fold doors open out onto the garden to extend the space even further.

The property also features a utility, study, spacious lounge, luxurious family bathroom and five double bedrooms including one with en-suite shower r



We do our best to ensure that our sales particulars are accurate and are not misleading but this is for general guidance and complete accuracy cannot be guaranteed. We are not qualified to verify tenure of a property and prospective purchasers should seek clarification from their solicitor. All measurements and land sizes are quoted approximately. The mention of any appliances, fixtures and fittings does not imply they are in working order.

Energy Efficiency Rating	Current	Potential
Very energy efficient - lower running costs		
(92 plus) A		
(81-91) B		
(69-80) C		
(55-68) D		
(39-54) E		
(21-38) F		
(1-20) G		
Not energy efficient - higher running costs		

England & Wales EU Directive 2002/91/EC

Environmental Impact (CO ₂) Rating	Current	Potential
Very environmentally friendly - lower CO ₂ emissions		
(92 plus) A		
(81-91) B		
(69-80) C		
(55-68) D		
(39-54) E		
(21-38) F		
(1-20) G		
Not environmentally friendly - higher CO ₂ emissions		

England & Wales EU Directive 2002/91/EC

