



 **HORLER**  
☎ 01753 62.1234. 🌐 horler.co.uk  
**For SALE**

**37 Bell View, Windsor, SL4 4ET**  
**£950,000**

 **HORLER**

### 37 Bell View, Windsor, SL4 4ET

This versatile four/five-bedroom home offers generously proportioned living accommodation, thoughtfully designed to maximise natural light and create a bright, welcoming atmosphere throughout. The well-balanced layout provides flexible living space to suit a variety of lifestyles, whether for growing families, home working, or entertaining guests.

At the heart of the home is a stylish and practical kitchen, offering ample workspace and storage, making it an ideal setting for both everyday family life and those who enjoy cooking and entertaining. The surrounding living areas provide comfortable and adaptable spaces for relaxation, dining and socialising.

Situated in the desirable town of Windsor, the property is conveniently located close to an excellent range of amenities, including shops, restaurants, cafés and leisure facilities. Beautiful parks and open green spaces are also nearby, offering plenty of opportunities for outdoor recreation. Excellent transport links provide easy access to surrounding towns and cities, making the property ideally positioned for both commuters and families seeking a well-connected lifestyle.



### **Property summery**

Nestled in the charming area of Bell View, Windsor, this delightful house offers a perfect blend of comfort and convenience. Windsor, known for its rich history and stunning architecture, provides an idyllic setting for those seeking a vibrant community atmosphere.

The property boasts a spacious layout, ideal for families or individuals looking for room to grow. With well-proportioned living areas, the house is designed to maximise natural light, creating a warm and inviting environment. The kitchen is both functional and stylish, making it a wonderful space for culinary enthusiasts to prepare meals and entertain guests.

The bedrooms are generously sized, providing a peaceful retreat at the end of a busy day. The garden, a true gem of this property, offers a private outdoor space perfect for relaxation or family gatherings.

Living in Windsor means you are just a stone's throw away from a variety of local amenities, including shops, restaurants, and parks. The area is well-connected by public transport, making it easy to explore the surrounding regions or commute to nearby towns and cities.

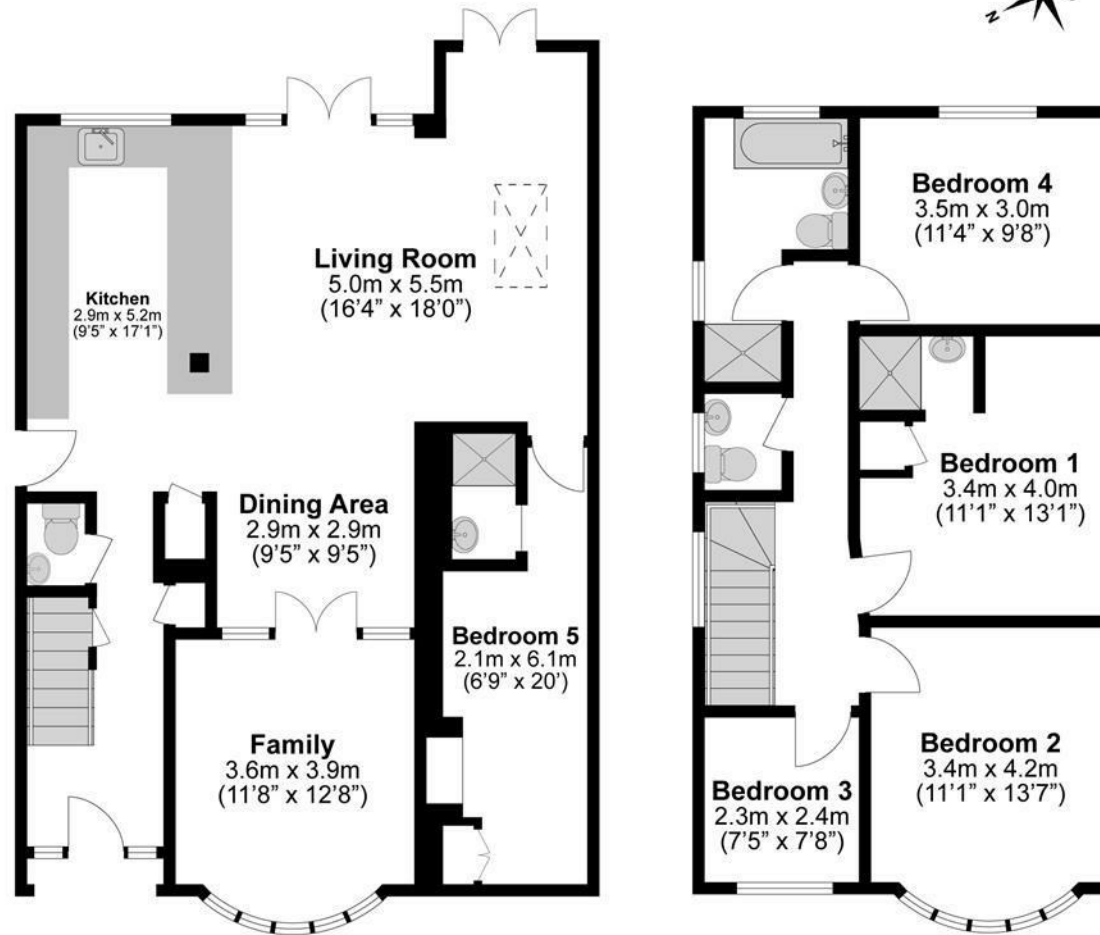
This house in Bell View is not just a property; it is a place where memories can be made and cherished. Whether you are looking to settle down or invest in a promising location, this home presents an excellent opportunity. Do not miss the chance to make this lovely house your own in the heart of Windsor.

### **Legal note**

**\*\*Although these particulars are thought to be materially correct, their accuracy cannot be guaranteed and they do not form part of any contract. \*\***







**Illustrations are for identification purposes only,  
measurements are approximate, not to scale.**