



49249, Pechiney House, Slough, Buckinghamshire, SL1 1QP  
£1,000 Per month



49249, Pechiney House, Slough, Buckinghamshire, SL1 1QP

**£1,000 Per month**

A bright, spacious furnished studio apartment, professionally managed and available now - perfect for anyone seeking a well-presented home in a convenient Slough location.

This generously sized studio comes fully furnished and in excellent condition, offering a comfortable, move-in-ready space with ample built-in storage throughout. The development benefits from secure access and dedicated bike storage, making it ideal for professionals and commuters alike.

Ideally positioned just 0.1 miles from a local supermarket, with everyday essentials right on your doorstep, the property combines convenience with peace of mind. As a professionally managed home, residents enjoy reliable support and a well-maintained environment.

Available now with flexible move-in dates over the next three weeks. Early viewing is highly recommended to avoid disappointment.

## Description

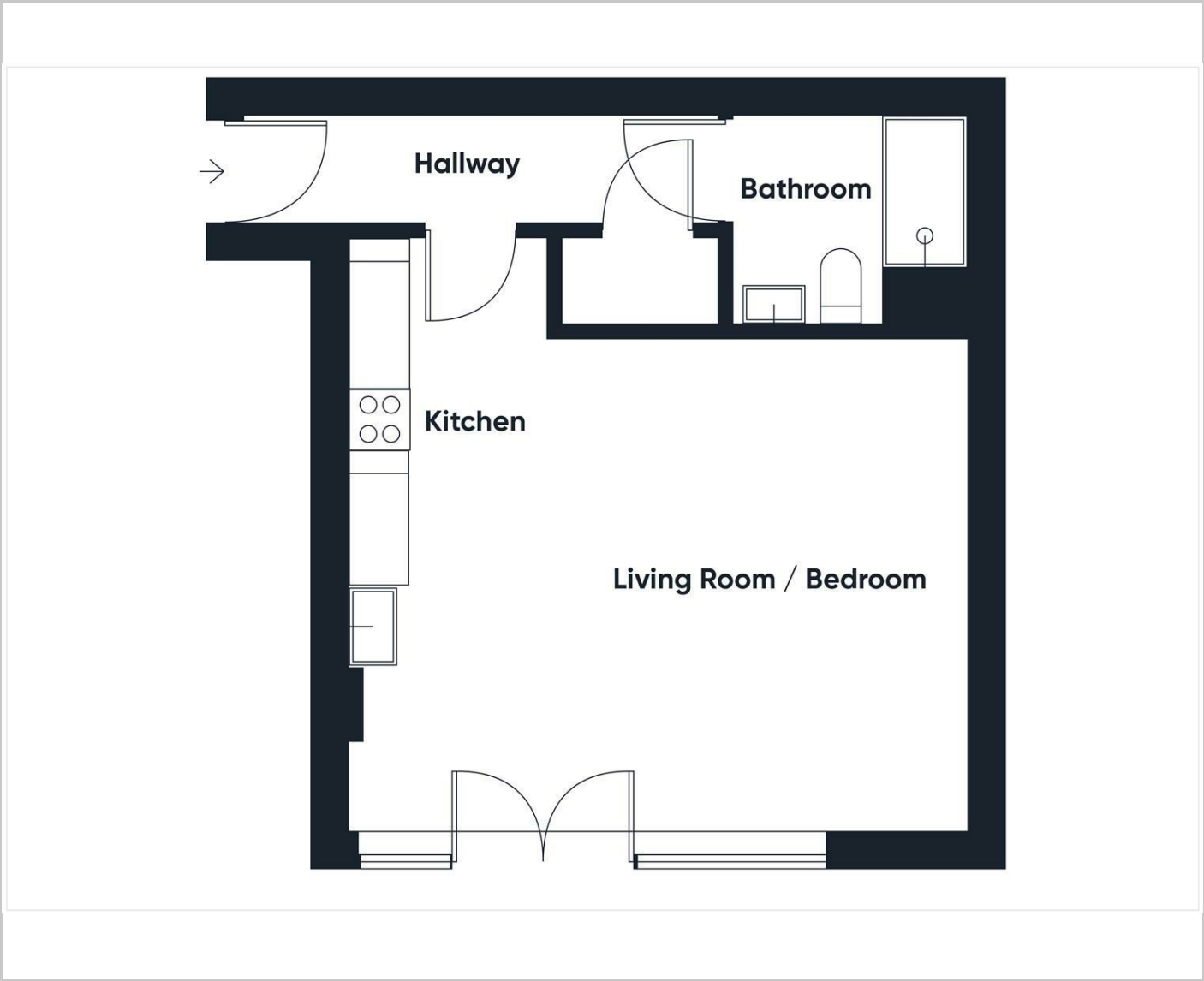
## Situation

Furnished

Council Tax Band: C

Available:

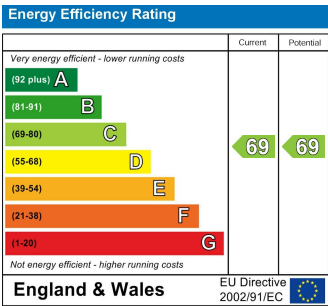
# Floor Plans



# Area Map



# Energy Performance Graph



These particulars, whilst believed to be accurate are set out as a general outline only for guidance and do not constitute any part of an offer or contract. Intending purchasers should not rely on them as statements of representation of fact, but must satisfy themselves by inspection or otherwise as to their accuracy. No person in this firm's employment has the authority to make or give any representation or warranty in respect of the property.