



Guide Price
£375,000

Freehold

4x  2x  2x 

**Margate Road,
Ramsgate, Kent, CT12**

OVER 60?

Secure this property
for up to **59% less!**

Wards
Helping you move forwards

Accommodation

GROUND FLOOR

Entrance Porch

Living Room : 17'1 x 9'8 (5.21m x 2.95m)

Bedroom 3: 17'3 x 10'4 (5.26m x 3.15m)

Bedroom 4 : 13'6 x 7'2 (4.12m x 2.19m)

Bathroom

LOWER GROUND FLOOR

Lounge/Diner/Kitchen : 23'6 x 18'1 (7.17m x 5.52m)

FIRST FLOOR

Landing

Bedroom 1 with Bath : 20'5 x 17'4 (6.23m x 5.29m)

Bedroom 2: 13'3 x 10'1 (4.04m x 3.08m)

OUTBUILDING

Garden Room

Office/Treatment Room : 11'5 x 9'5 (3.48m x 2.87m)

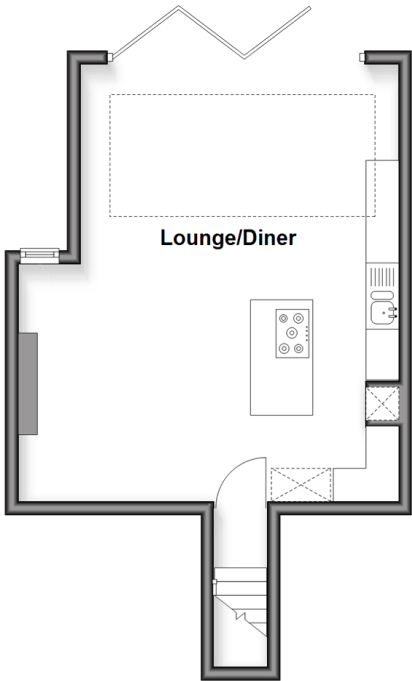
OUTSIDE

Off Road Parking

Gardens to Front and Rear

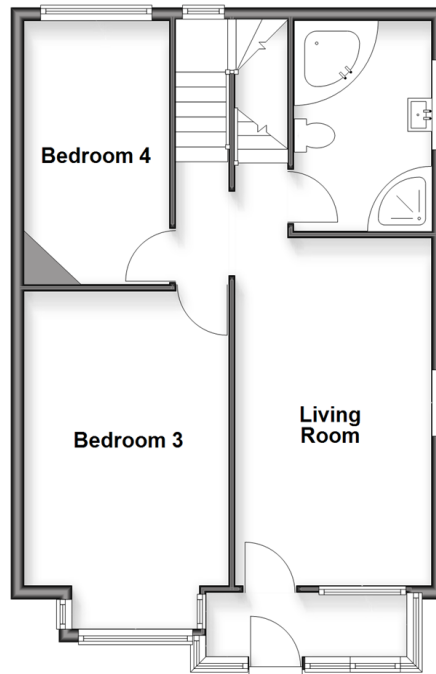
Lower Ground Floor

Approx. 37.5 sq. metres (403.2 sq. feet)



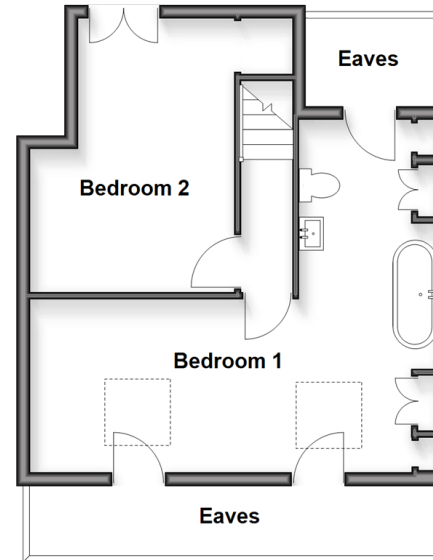
Ground Floor

Approx. 57.7 sq. metres (621.2 sq. feet)



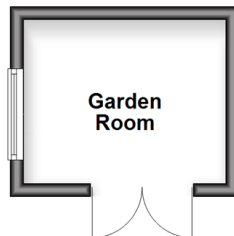
First Floor

Approx. 37.9 sq. metres (407.7 sq. feet)



Outbuilding

Approx. 7.6 sq. metres (82.3 sq. feet)



Outbuilding

Approx. 10.3 sq. metres (110.9 sq. feet)





Main features

- Off road parking for two cars
- Versatile layout with ample space
- Spacious sunny rear garden
- Two outbuildings in the garden ideal for a home office
- Located on the loop route



Nearest Schools

Primary Schools: Dame Janet Community Junior School 0.7 miles, Newlands Primary 0.8 miles, St Laurence in Thanet C of E Junior School 0.8 miles
Secondary Schools: St Lawrence College 0.6 miles, The Royal Harbour Academy 1.0 miles



Transport Information

Train Stations: Ramsgate 0.5 miles, Dumpton Park 1.5 miles, Broadstairs 2.2 miles



Address

Margate Road, Ramsgate, Kent, CT12



Directions

For directions to this property please contact us.



Wards
Helping you move forwards

Call Ramsgate Branch 01843 580314 ■ wardsofkent.co.uk



- Legal advice should be taken to verify fixtures/fittings, planning, alterations and/or lease details
- Appliances & services are untested, dimensions are approximate and floor plans are not to scale
- Through a Homewise Home For Life Plan people aged 60+ can secure this property for up to 59% less, by purchasing a Lifetime Lease



11435180/20260307/DL/ATN