



Ground Floor Flat

Two Bedrooms

Large Modern
Bathroom

Residents Parking

Surrounded by Green
Space

Transport Links

Oliver
& Akers

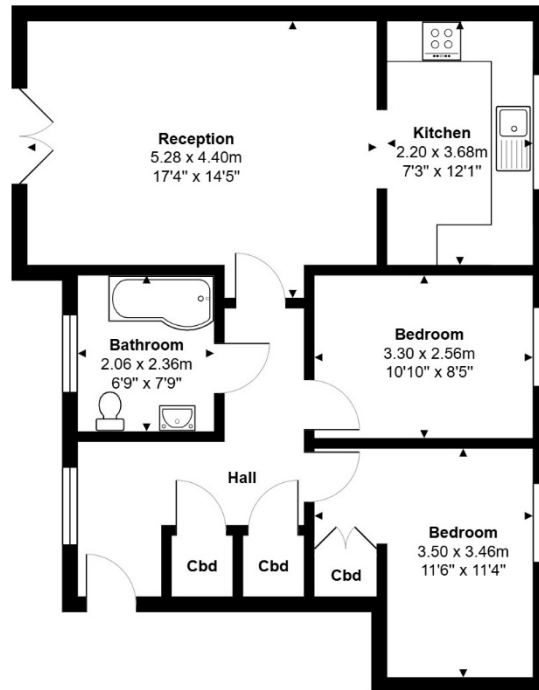
01727 580085

1 Lime Tree Court, Napsbury Park, St. Albans, AL2 1UL

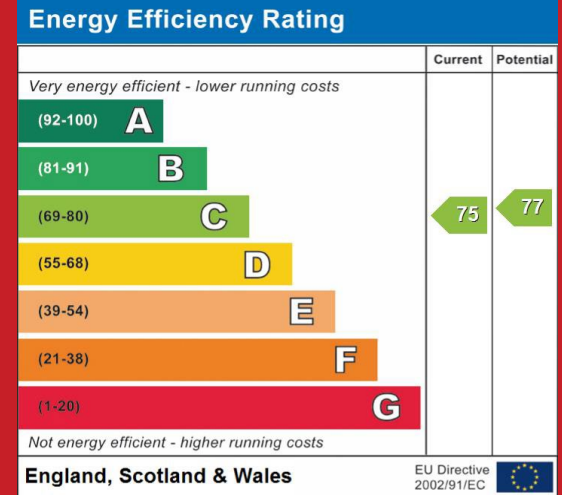
£170,000

www.oliverandakers.com

This is a FANTASTIC OPPORTUNITY to purchase a 50% share on a TWO BEDROOM, GROUND FLOOR APARTMENT in the stunning Napsbury Park! Surrounded by acres of green space and with GREAT ROAD AND TRANSPORT LINKS, this is a great first time buy!



Total Area: 62.4 m² ... 672 ft²
 All measurements are approximate and for display purposes only



Oliver & Akers

01727 580085

1 Lime Tree Court, Napsbury Park, St. Albans, AL2 1UL

£170,000

www.oliverandakers.com