



## Lucy Crescent, W3

£750,000

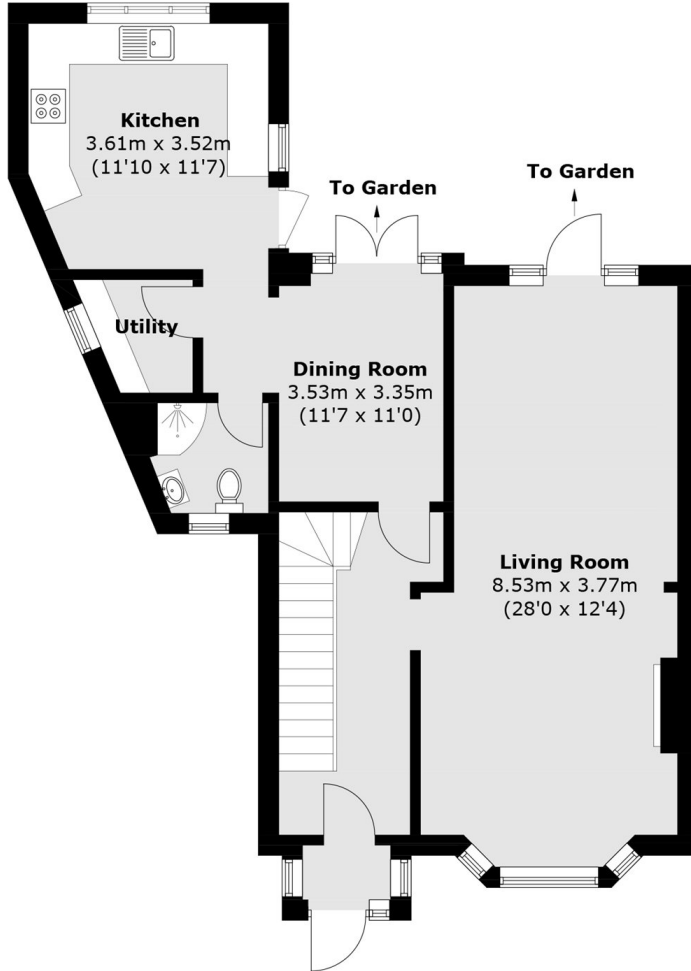
A semi detached 1930s mock tudor three bedroom period home arranged over two floors spanning circa 1,300 sq.ft. The property benefits from driveway parking for two cars, a separate dining and kitchen as well as double reception room with significant potential to extend throughout (STPP).

Located within a fifteen minute walk from Acton Main Line (Elizabeth line) and equidistant to West and North Acton stations (Central line).

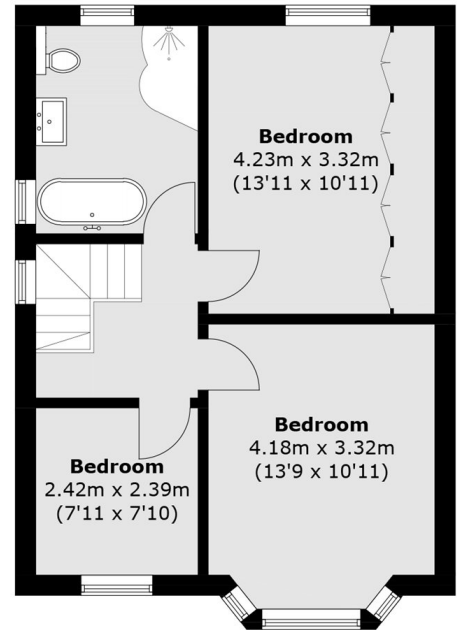
### Features

- Three Bedrooms
- Two Bathrooms
- Semi Detached
- Potential to extend (STPP)
- Driveway Parking
- Excellent Transport Links

# Lucy Crescent, London, W3



**Ground Floor**



**First Floor**

Total area (approx.): 119.1 sq. m (1,281.9 sq. ft)