



**Guide Price**  
**£160,000**

**Leasehold**

1x  1x  1x 

**Columbia House,  
Romany Road,  
Worthing, West Sussex,  
BN13**

**OVER 60?**

Secure this property  
for up to **59% less!**

**cubitt & west**  
Helping you move forwards



## Main features

- Open plan kitchen / living area
- Far reaching views
- Wifi controlled heating
- Close to an assortment of shops, restaurants & bars
- Excellent bus links including 24hr service into Brighton

## Accommodation

### FORTH FLOOR

Entrance Hall

Kitchen / Lounge Diner: 20'3 x 8'11 (6.18m x 2.72m)

Bedroom: 14'0 x 9'5 (4.27m x 2.87m)

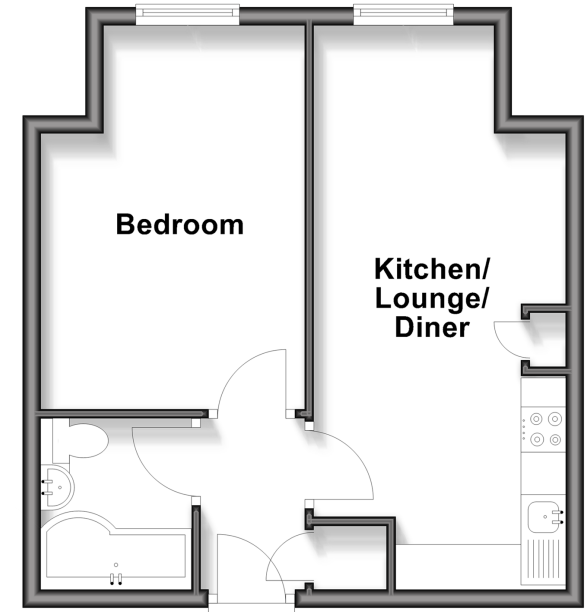
Bathroom

### OUTSIDE

Allocated Parking

## Top Floor

Approx. 34.8 sq. metres (374.1 sq. feet)



Call Worthing - 01903 700657 ■ [cubittandwest.co.uk](http://cubittandwest.co.uk)

■ Through a Homewise Home For Life Plan people aged 60+ can secure this property for up to 59% less, by purchasing a Lifetime Lease



40807335/20260402/ES/OM