



61, Cromwell Road, Hertford
SG13 7DP

Price Guide £730,000



stevenoates.com



61 Cromwell Road, Hertford, Hertfordshire, SG13 7DP

Nestled on the charming Cromwell Road in Hertford, this stunning semi-detached house, built between 1930 and 1939, has been immaculately refurbished to a superb standard throughout by the present owner. The property boasts a entrance hallway leading into a good size living room, utility room and ground floor cloakroom which enhances the practicality of daily living. The current owner has remodelled the house from top to bottom, ensuring that every detail has been carefully considered and executed to the highest standard. This home is not just a place to live; it is a sanctuary that reflects quality and sophistication. The first floor comprises of 2 good size bedrooms, study and luxury bathroom. suite. One of the standout features of this property is the remarkable loft conversion bedroom with a whole wall of glass and breath-taking views over the nearby allotments situated behind the property and own luxury ensuite shower room. Externally the property has a garden backing out onto allotments.

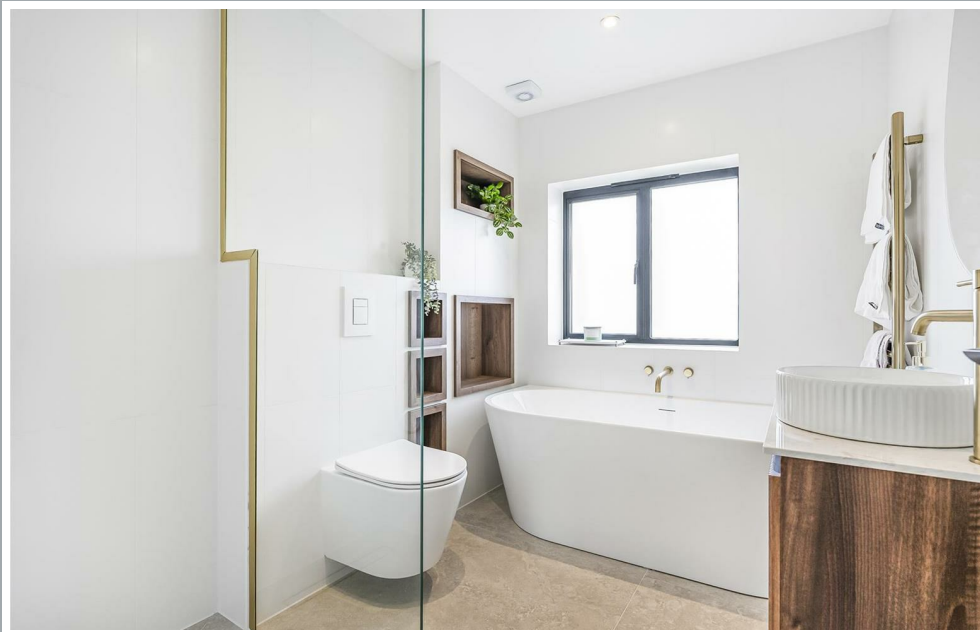
Located on the popular east side of Hertford, this excellent family home offers convenient access to Hertford's favoured SG13 primary and secondary schooling, along with both Hertford town centre and Hertford East train station which are both approximately 1 mile away. Far reaching and stunning views to the rear over allotments and the meads.



70 Fore Street, Hertford, Hertfordshire, SG14 1BY



70 Fore Street, Hertford, Hertfordshire, SG14 1BY



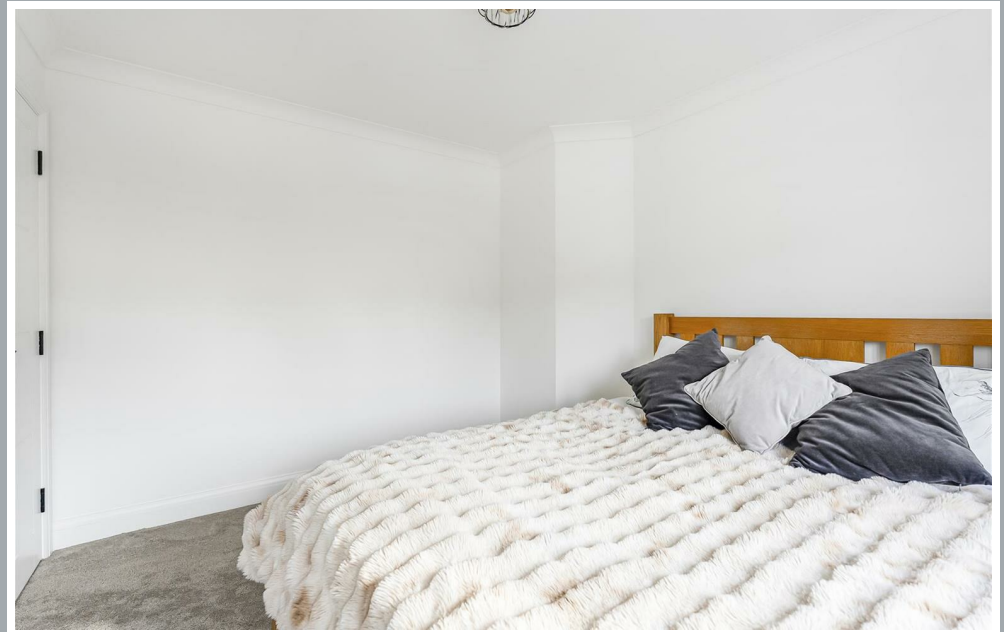
70 Fore Street, Hertford, Hertfordshire, SG14 1BY



70 Fore Street, Hertford, Hertfordshire, SG14 1BY



70 Fore Street, Hertford, Hertfordshire, SG14 1BY



70 Fore Street, Hertford, Hertfordshire, SG14 1BY



70 Fore Street, Hertford, Hertfordshire, SG14 1BY



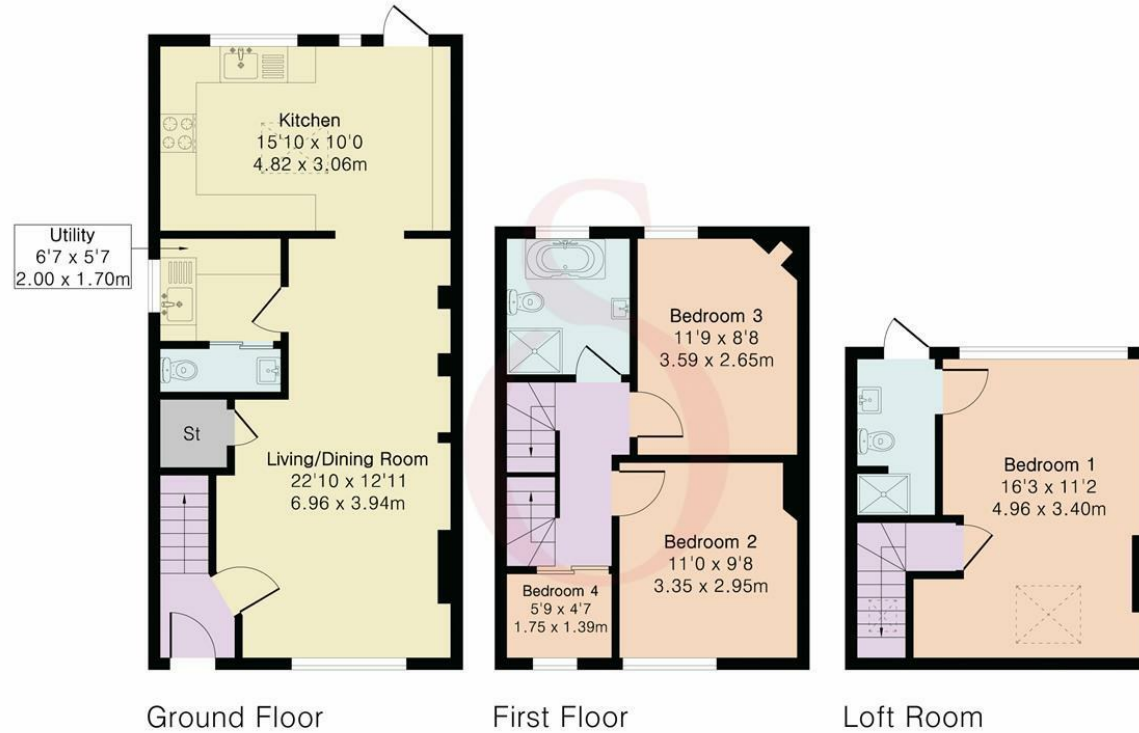
70 Fore Street, Hertford, Hertfordshire, SG14 1BY

Approximate Gross Internal Area 1145 sq ft - 107 sq m

Ground Floor Area 527 sq ft – 49 sq m

First Floor Area 361 sq ft – 34 sq m

Loft Room Area 257 sq ft – 24 sq m



Floor plan produced in accordance with RICS Property Measurement 2nd Edition. Although Pink Plan Ltd ensures the highest level of accuracy, measurements of doors, windows and rooms are approximate and no responsibility is taken for error, omission or misstatement. These plans are for representation purposes only and no guarantee is given on the total square footage of the property within this plan. The figure icon is for initial guidance only and should not be relied on as a basis of valuation.



These particulars, whilst believed to be accurate are set out as a general outline only for guidance and do not constitute any part of an offer or contract. Intending purchasers should not rely on them as statements of representation of fact, but must satisfy themselves by inspection or otherwise as to their accuracy. No person in this firm's employment has the authority to make or give any representation or warranty in respect of the property.

