



Wansford Road, Elton

£550,000 - £650,000 Guide Price **Freehold**

**Sharman
Quinney**

Key Features



- Large corner plot
- Double garage and driveway
- New boiler and expansion tank
- Lovely amenities in the local area
- Four bedrooms

Located within a very desirable village setting, this impressive four-bedroom detached property is set back from the road and occupies a generous corner plot, offering both privacy and space.

The property enjoys an almost wrap around garden, beautifully established with mature trees, shrubs and well planted borders. The outdoor space also benefits from a patio area and extensive lawn, making it ideal for keen gardeners, families or those who enjoy outdoor entertaining.

The accommodation begins with an extended porch leading into a welcoming hallway, which benefits from a ground floor cloakroom. From here, the property opens into an open plan style lounge and a separate dining room. These rooms offer flexibility and can be opened up or separated

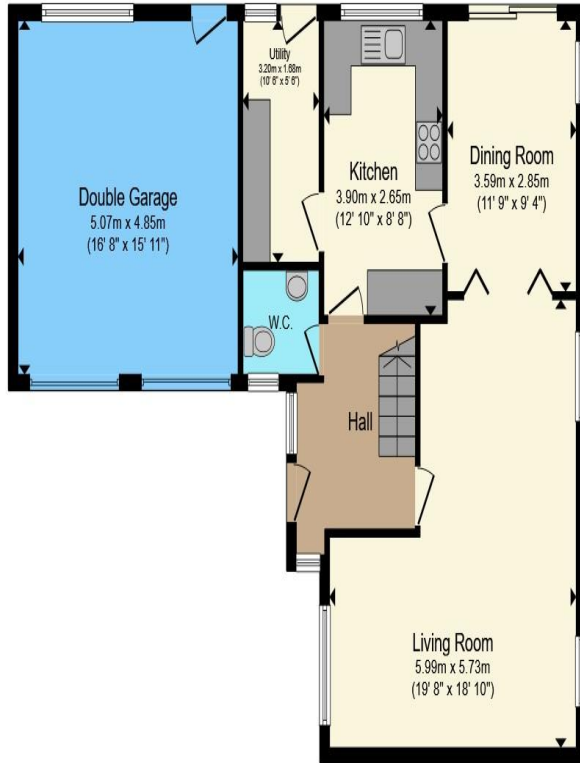


as required using the existing bi fold doors.

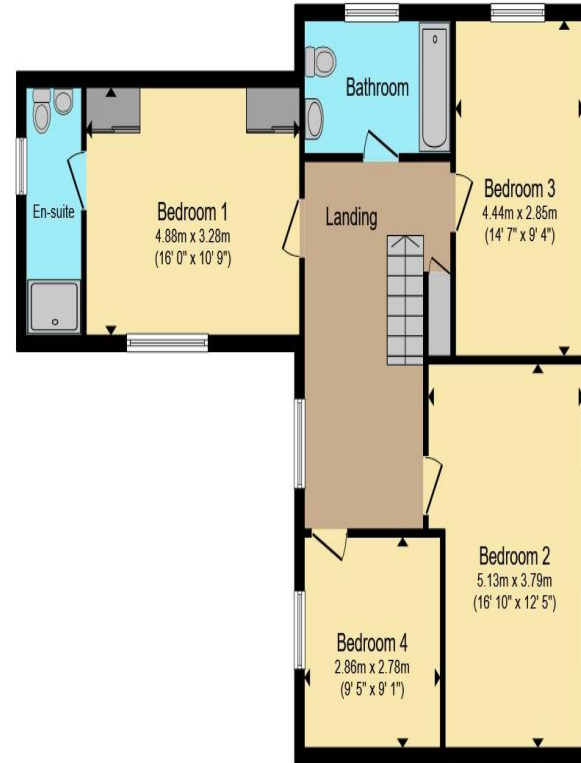
The kitchen enjoys pleasant views over the large garden and leads through to the utility room, which houses the newly installed boiler along with the cold water and expansion tanks. The utility room also provides access to the rear garden. Upstairs, the property offers four generously sized bedrooms. The master bedroom benefits from an en suite, while the remaining bedrooms are served by a family bathroom.

This is a rare opportunity to acquire a spacious detached home in a highly regarded village location, offering flexible living space and an exceptional garden setting. Early viewing is recommended to fully appreciate all that is on offer.





Ground Floor



First Floor

Total floor area 165.3 m² (1,780 sq.ft.) approx

This floor plan is for illustrative purposes only. It is not drawn to scale. Any measurements, floor areas (including any total floor area), openings and orientation are approximate. No details are guaranteed, they cannot be relied upon for any purpose and they do not form part of any agreement. No liability is taken for any error, omission or misstatement. A party must rely upon its own inspection(s). Powered by www.propertybox.io

**Sharman
Quinney**

To view this property call Sharman Quinney on:
01832 274567

Selling your property?

Contact us to arrange a **FREE** home valuation.

 01832 274567

 The Old Town Hall Market Place, Oundle, Peterborough, Cambridgeshire, PE8 4BQ

 oundle@sharmanquinney.co.uk

 www.sharmanquinney.co.uk



 SCAN ME



Sharman Quinney Holdings Limited is registered in England and Wales under company number 4174227, Registered Office is Cumbria House, 16-20 Hockliffe Street, Leighton Buzzard, Bedfordshire, LU7 1GN. VAT Registration Number is 500 2481 05.

1: These particulars do not constitute part or all of an offer or contract. 2: The measurements indicated are supplied for guidance only and as such must be considered incorrect. 3: Potential buyers are advised to recheck the measurements before committing to any expense. 4: Sharman Quinney has not tested any apparatus, equipment, fixtures, fittings or services and it is the buyers interests to check the working condition of any appliances. 5: Sharman Quinney has not sought to verify the legal title of the property and buyers must obtain verification from their legal representative. 6: Intending purchasers will be asked to produce identification documentation at a later stage and we would ask your co-operation in order that there will be no delay in agreeing the sale. Ref: OUN202906 - 0002

