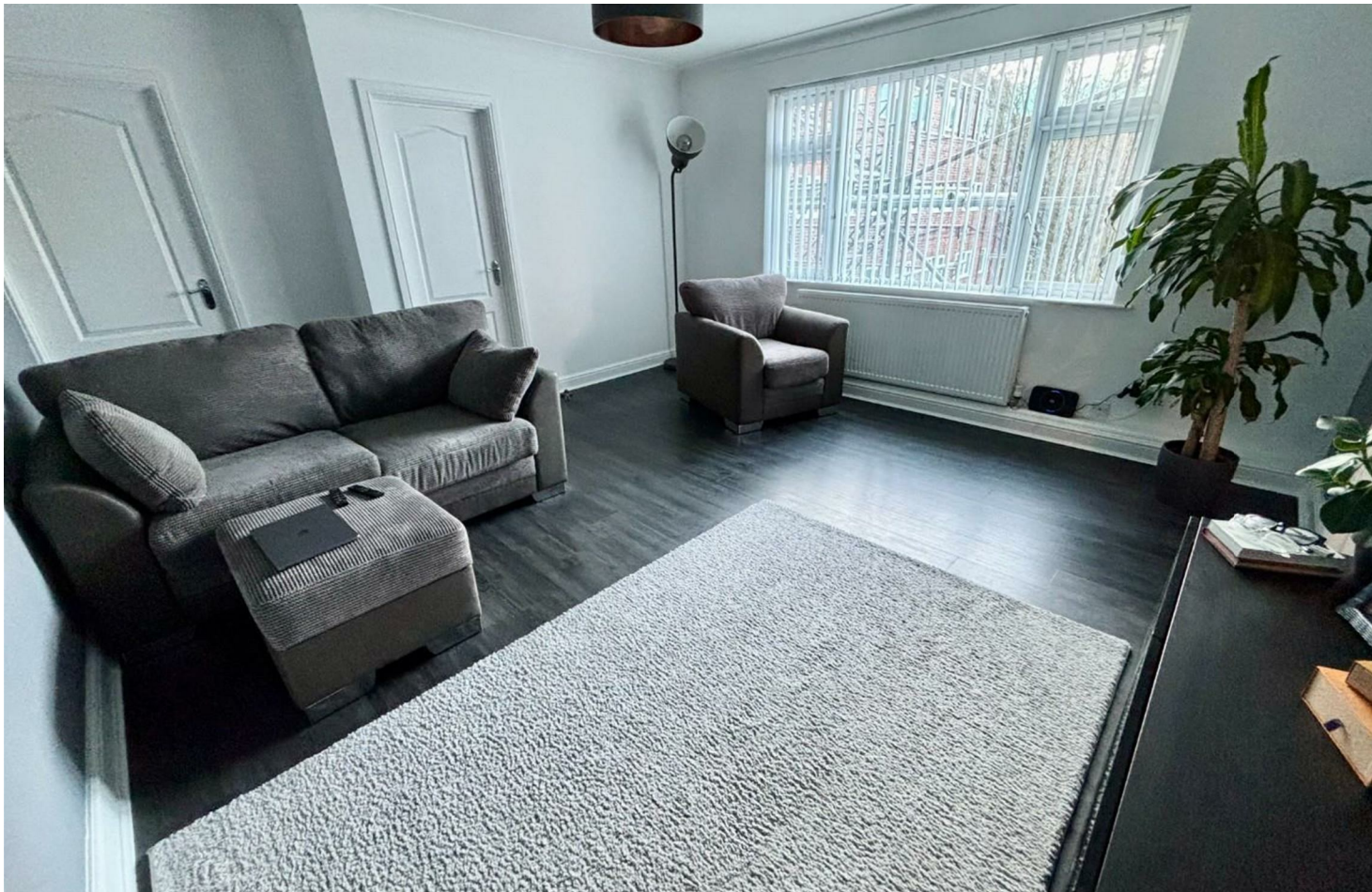




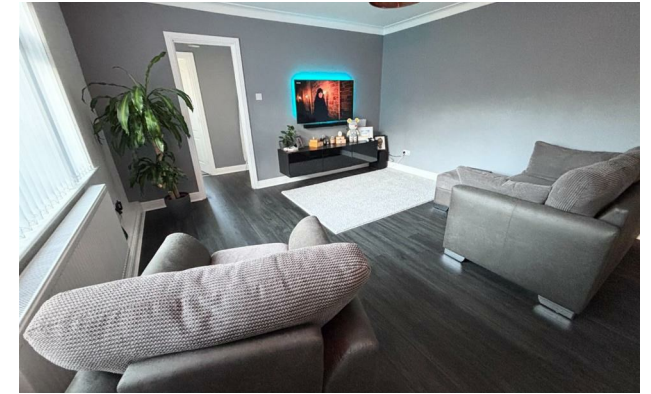
jordan fishwick

DIDSBURY
Spath Holme



Spath Holme, Didsbury, M20 2TX

Guide Price £210,000



The Property

AN IMMACULATE, FIRST FLOOR APARTMENT SET WITHIN A PURPOSE BUILT DEVELOPMENT AND FORMING PART OF AN EXTREMELY POPULAR TREE LINED ROAD WHICH IS WITHIN WALKING DISTANCE TO BOTH DIDSBURY AND WEST DIDSBURY VILLAGES. The stylish living space is warmed by gas fired central heating, which is further complemented by uPVC double glazing and in outline comprises:- Entrance hall with built-in cloaks cupboard, impressive living room, modern fitted kitchen with integrated appliances, a double bedroom with built-in wardrobes and a modern shower room with chrome fittings. Externally, there are communal gardens and ample residents parking available to the front and rear of the building.

Directions

M20 2TX



- Immaculate apartment
- First floor position
- Gas central heating
- uPVC double glazing
- Modern kitchen & shower room
- Impressive living room
- Bedroom with built-in wardrobe
- Entrance hall with cloaks cupboard
- Residents parking
- Great location

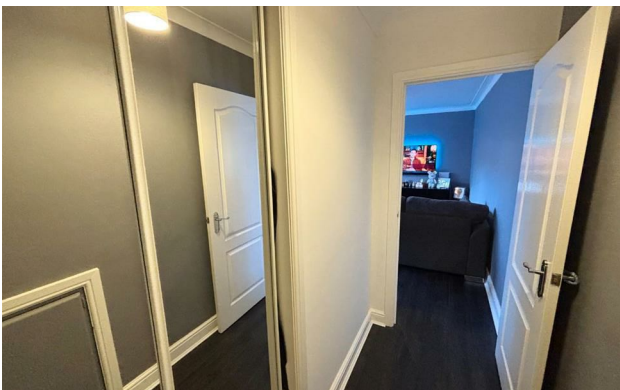
Postcode - M20 2TX

EPC Rating - C

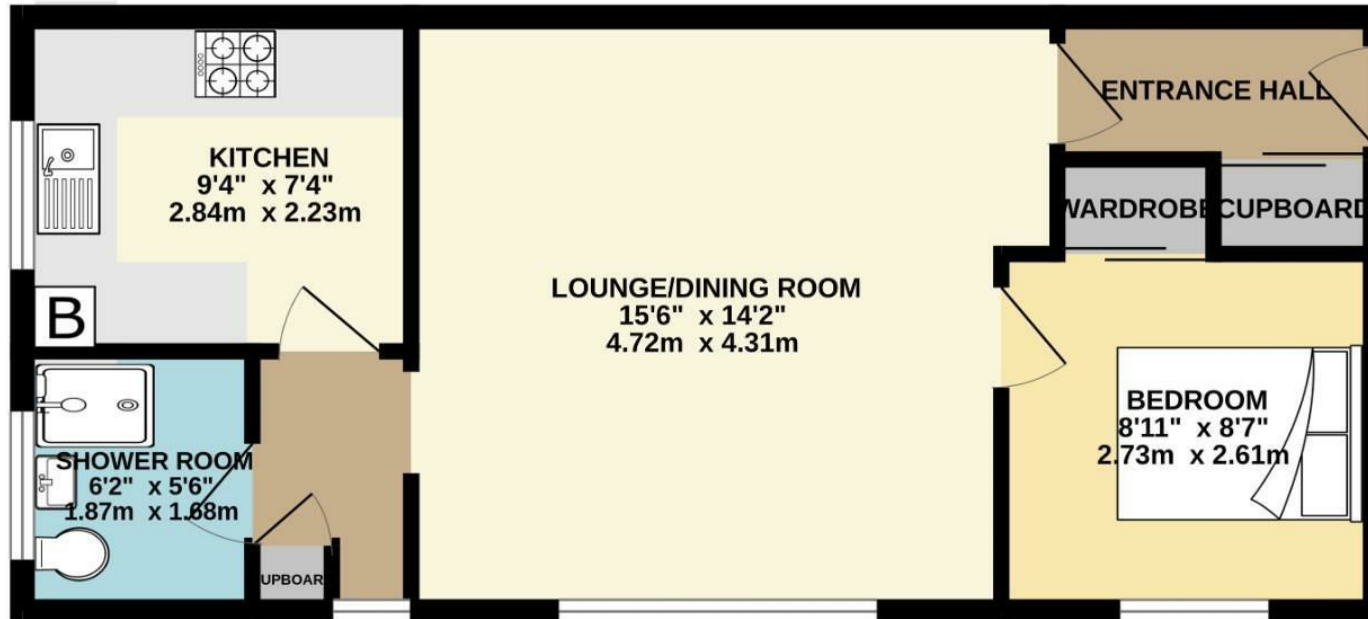
Floor Area - 462.00 sq ft

Local Authority - Manchester City Council

Council Tax - A



FIRST FLOOR
462 sq.ft. (42.9 sq.m.) approx.



TOTAL FLOOR AREA : 462 sq.ft. (42.9 sq.m.) approx.
Measurements are approximate. Not to scale. Illustrative purposes only
Made with Metropix ©2026



These particulars are believed to be accurate but they are not guaranteed and do not form a contract. Neither Jordan Fishwick nor the vendor or lessor accept any responsibility in respect of these particulars, which are not intended to be statements or representations of fact and any intending purchaser or lessee must satisfy himself by inspection or otherwise as to the correctness of each of the statements contained in these particulars. Any floorplans on this brochure are for illustrative purposes only and are not necessarily to scale.

Offices also at: Wilmslow, Macclesfield, Hale, Sale, Chorlton, Glossop, Manchester & Salford

757-759 Wilmslow Road, Didsbury Village, Manchester

0161 445 4480

didsbury@jordanfishwick.co.uk
www.jordanfishwick.co.uk