

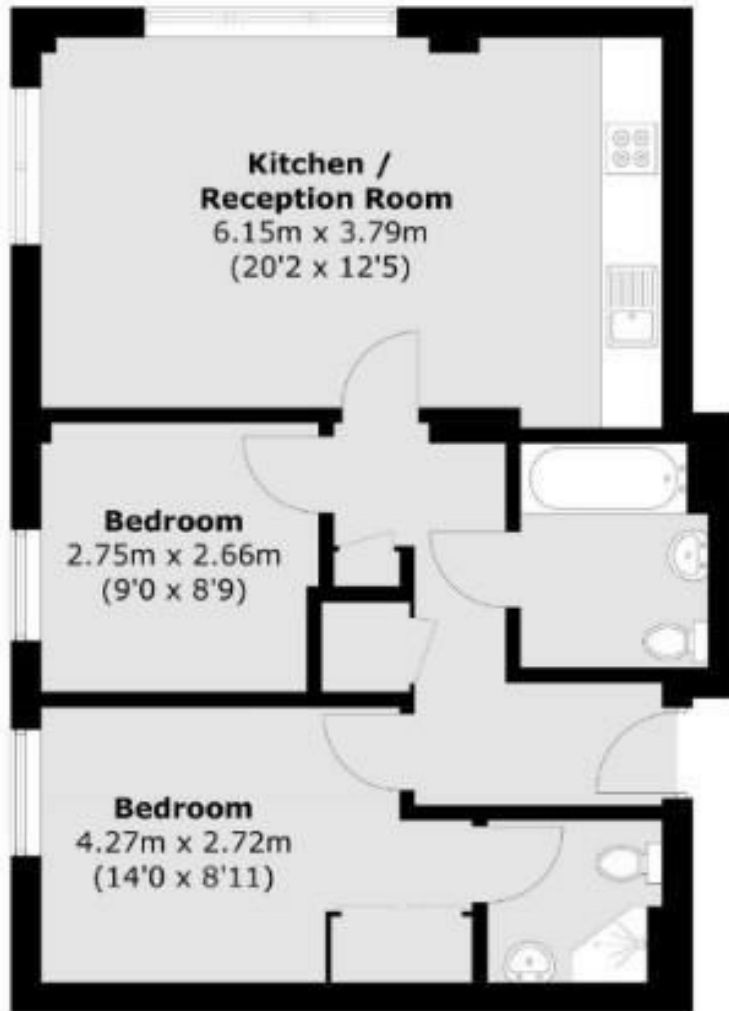
# Rolfe East



Victoria Road, W3

£2,200 pcm

- Available in July
- Part Furnished
- Great Location
- Approx. 2 mins walk to North Acton Station



Total area (approx.): 58.6 sq. m (630.8 sq. ft)

## Viewings

Viewings by arrangement only.  
Call 020 8993 7755 to make an appointment.

## Council Tax Band

E

## EPC Rating:

C

Energy Efficiency Rating		
	Current	Potential
<i>Very energy efficient - lower running costs</i>		
(92 plus) <b>A</b>		
(81-91) <b>B</b>		<b>82</b>
(69-80) <b>C</b>	<b>79</b>	
(55-68) <b>D</b>		
(39-54) <b>E</b>		
(21-38) <b>F</b>		
(1-20) <b>G</b>		
<i>Not energy efficient - higher running costs</i>		
<b>England &amp; Wales</b>	EU Directive 2002/91/EC	