



Tooley Street, SE1

£550,000

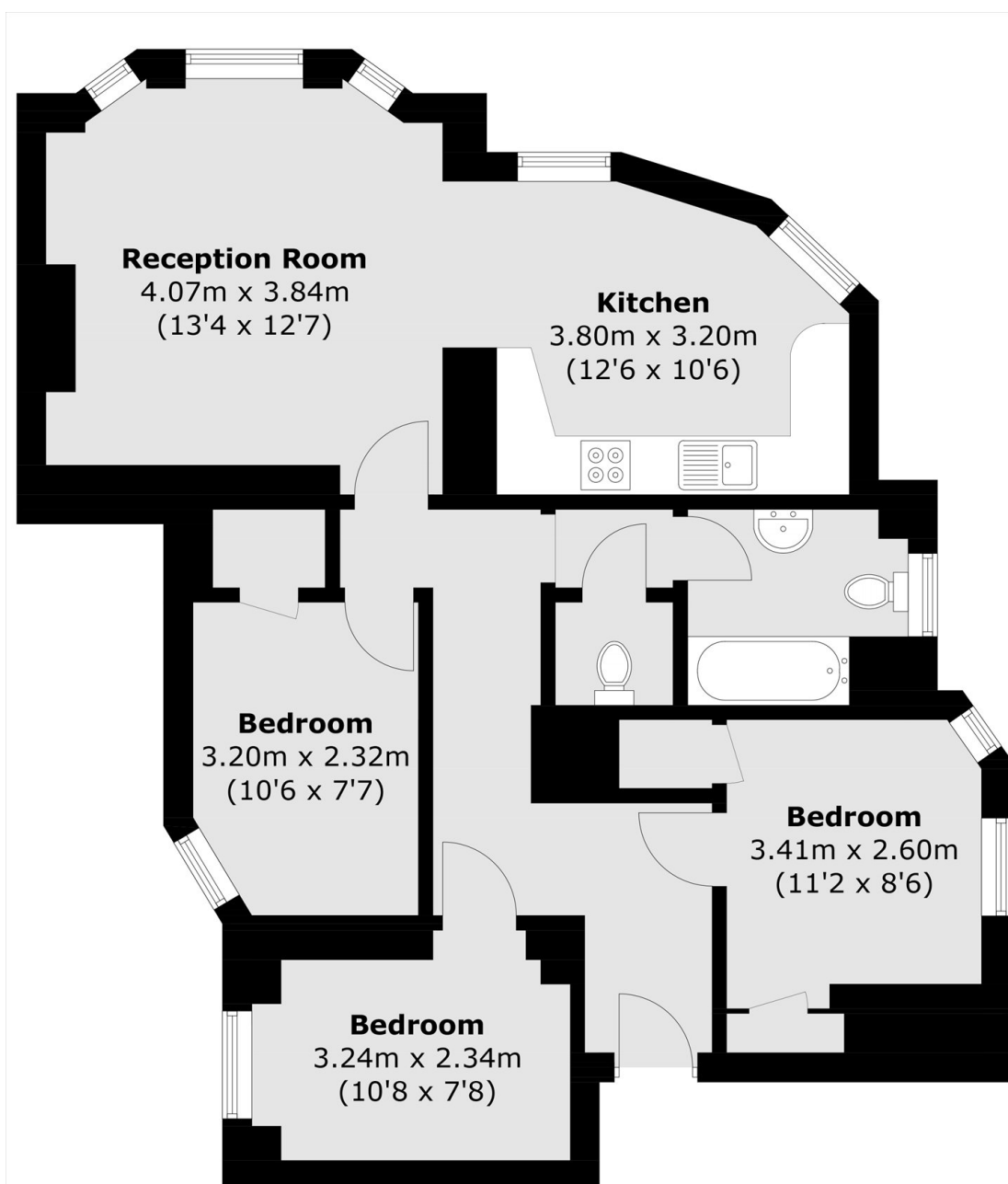
A beautifully presented raised ground-floor Victorian flat offering spacious accommodation and period charm. The property features a generous reception room, a modern fitted kitchen, three double bedrooms, a contemporary three-piece bathroom, and an additional WC.

Enviably located moments from London Bridge Station in the highly sought-after Devon Mansions, this property benefits from easy access to London Bridge Station, Shad Thames, Borough Market and the best of the South Bank's attractions and amenities.

Features

- Victorian Mansion Flat
- Three Double Bedrooms
- Large Living Room & Kitchen
- Excellent Transport Links
- Very Central Location
- Chain Free Sale

Tooley Street, London, SE1



Ground Floor

Total area (approx.): 74.6 sq. m (803.0 sq. ft)