



## BRAMHAM GARDENS, SW5

£1,500,000

Amazing views  
Split-level apartment  
Private garden access  
Sought after square  
Energy rating d  
VIRTUAL TOUR

@marshandparsons  
marshandparsons.co.uk

MARSH &  
PARSONS

# ABOUT THE PROPERTY

A sublime split-level apartment offering over 1100 sq ft of well-presented accommodation situated within a beautiful period red brick building on this prestigious garden square in Earls Court. This property contains two bedrooms and two bathrooms and the enjoys the most spectacular southerly views over the private residents' gardens and greenery from the reception room. The building also enjoys the added convenience of a live-in caretaker.

Bramham Gardens is a large, tranquil one-acre lawned garden established in the late 1800s. It boasts some of the tallest plane trees in any London square.





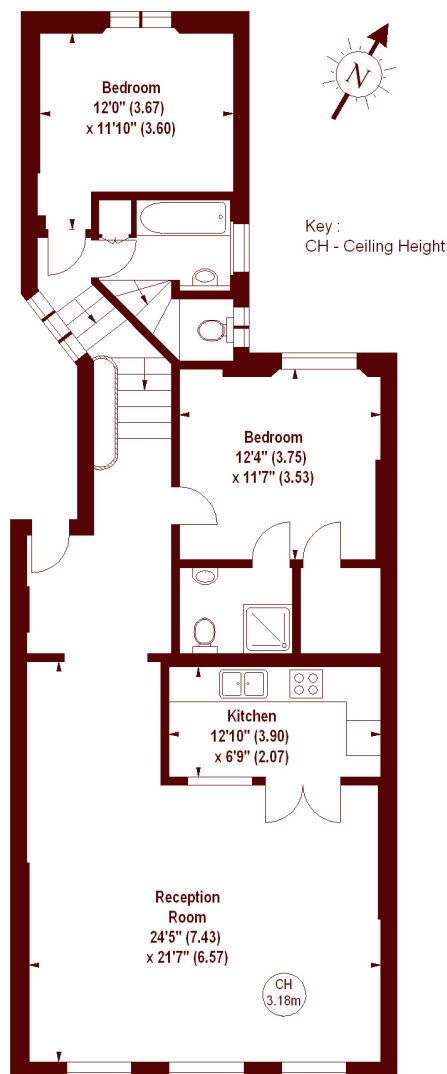




# STEP INSIDE BRAMHAM GARDENS

## Bramham Gardens, SW5

APPROX. GROSS INTERNAL FLOOR AREA 1102 SQFT / 102.38 SQM



### THIRD FLOOR

The floor plan is not to scale and measurements and areas shown are approximate and therefore should be used for illustrative purposes only. The plan has been prepared in accordance with the RICS code of Measuring Practice and whilst we have confidence in the information produced, it must not be relied on. If there is any aspect of particular importance, you should carry out or commission your own inspection of the property.  
Copyright of FeaturePRO.

Earls Court  
020 7244 2210

Energy Rating: D We aim to make our particulars both accurate and reliable. However, they are not guaranteed; nor do they form part of an offer or contract. If you require clarification on any points then please contact us, especially if you're traveling some distance to view. Please note that appliances and heating systems have not been tested and therefore no warranties can be given as to their good working order

MARSH &  
PARSONS