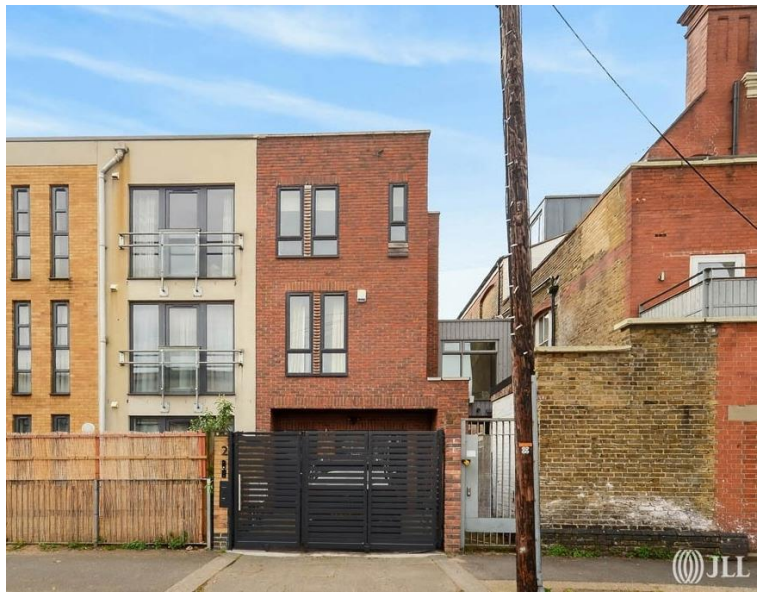


Maitland Road, London E15
£650,000 Freehold







Description

Situated in Stratford, one of East London's most dynamic and well-connected neighbourhoods, this exceptional three-bedroom end of terrace house represents a rare opportunity to acquire a beautifully designed freehold home. The property was commissioned as a unique one-off build by Gbolade Design Studio, the acclaimed architects behind the renowned Pigeons Conversion, resulting in a residence that stands apart from anything else in the area.

Spanning approximately 990 square feet, the home blends period character with practical modern updates. The kitchen comes fitted with integrated appliances, while the bathroom has been recently refurbished. The top floor main bedroom offers lovely sunrise views each morning, and the south west facing garden and living room catch warm afternoon sun through to sunset. The private garden includes a shed and seating area, ideal for entertaining or simply unwinding outdoors. The property also benefits from a driveway with a secure bespoke gate, providing convenient off-street parking.

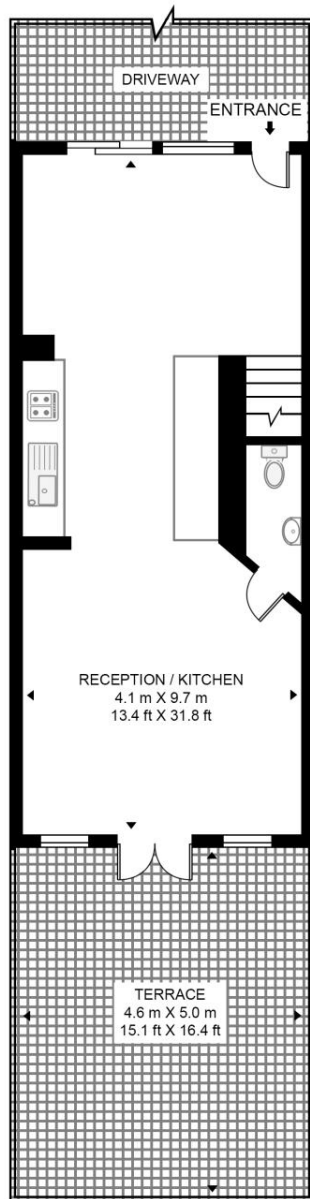
- Freehold end of terrace house
- Three bedrooms
- Two bathrooms (one en-suite)
- South West facing garden with shed & seating area
- Driveway with secure bespoke gate
- Within a short walk of Maryland & Stratford station
- Approx. 990 sq. ft (92 sq. m)
- EPC Rating C

Floorplan

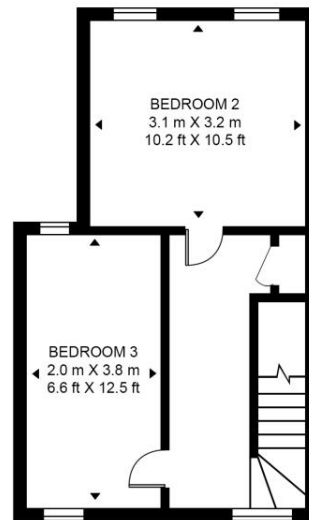
990 sq ft | 92 sq m

MAITLAND ROAD

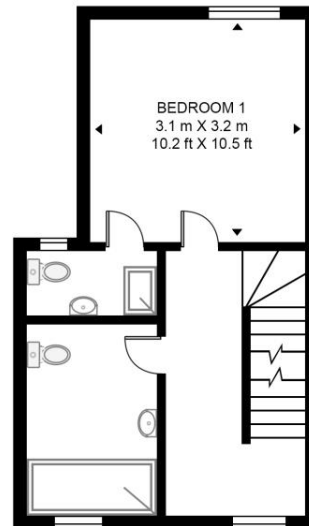
APPROXIMATE GROSS INTERNAL FLOOR AREA 990 SQ.FT (92 SQ.M)



GROUND FLOOR



SECOND FLOOR



FIRST FLOOR



This floor plan has been defined by the RICS Code of Measurement. This floor plan and all others are for approximate representative purposes only and upon usage is agreed to as such by the client.

WWW: hdvirtualart.com | TEL: 0203.974.1567 | EMAIL: info@hdvirtualart.com

Stratford
5 Station Street,
London E15 1DA
+4420 3147 1500
Lettingsstratford@eu.jll.com

Urban living, your way.

jll.co.uk/residential

© 2019 Jones Lang LaSalle IP, Inc. All rights reserved. All information contained herein is from sources deemed reliable; however, no representation or warranty is made to the accuracy thereof.

