



**OVER 60?**

Secure this property  
for up to **59% less!**

**Guide Price**  
**£325,000**

**Freehold**

2x  1x  1x 

**Tettenhall Way,**  
**Faversham, Kent, ME13**

*Wards*  
Helping you move forwards



## Main features

- Within walking distance to the town centre and mainline station
- Well presented throughout
- Good sized rear garden with added conservatory
- Perfect first home
- Popular new development

## Accommodation

### GROUND FLOOR

Entrance Hall

Lounge: 12'6 x 11'5 (3.81m x 3.48m)

Kitchen/Diner: 14'6 x 9'2 (4.42m x 2.80m)

Cloakroom

### FIRST FLOOR

Landing

Bedroom 1: 11'5 x 11'2 (3.48m x 3.41m)

Bedroom 2: 11'5 x 11'2 (3.48m x 3.41m)

Bathroom

### OUTSIDE

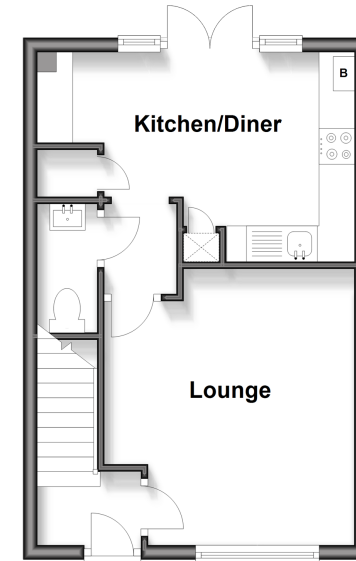
Front Garden

Rear Garden

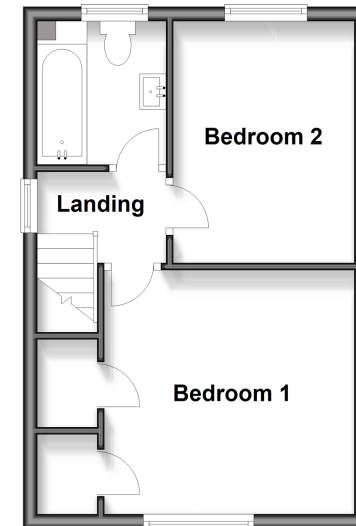
Driveway

Parking For 2 Cars

**Ground Floor**  
Approx. 30.8 sq. metres (331.6 sq. feet)



**First Floor**  
Approx. 30.8 sq. metres (331.6 sq. feet)



**Call Faversham - 01795 535517 ■ [wardsofkent.co.uk](http://wardsofkent.co.uk)**

- Legal advice should be taken to verify fixtures/fittings, planning, alterations and/or lease details
- Appliances & services are untested, dimensions are approximate and floor plans are not to scale
- Through a Homewise Home For Life Plan people aged 60+ can secure this property for up to 59% less, by purchasing a Lifetime Lease



10832496/20260206/JB/HR