



## SUDBROOKE ROAD, SW12

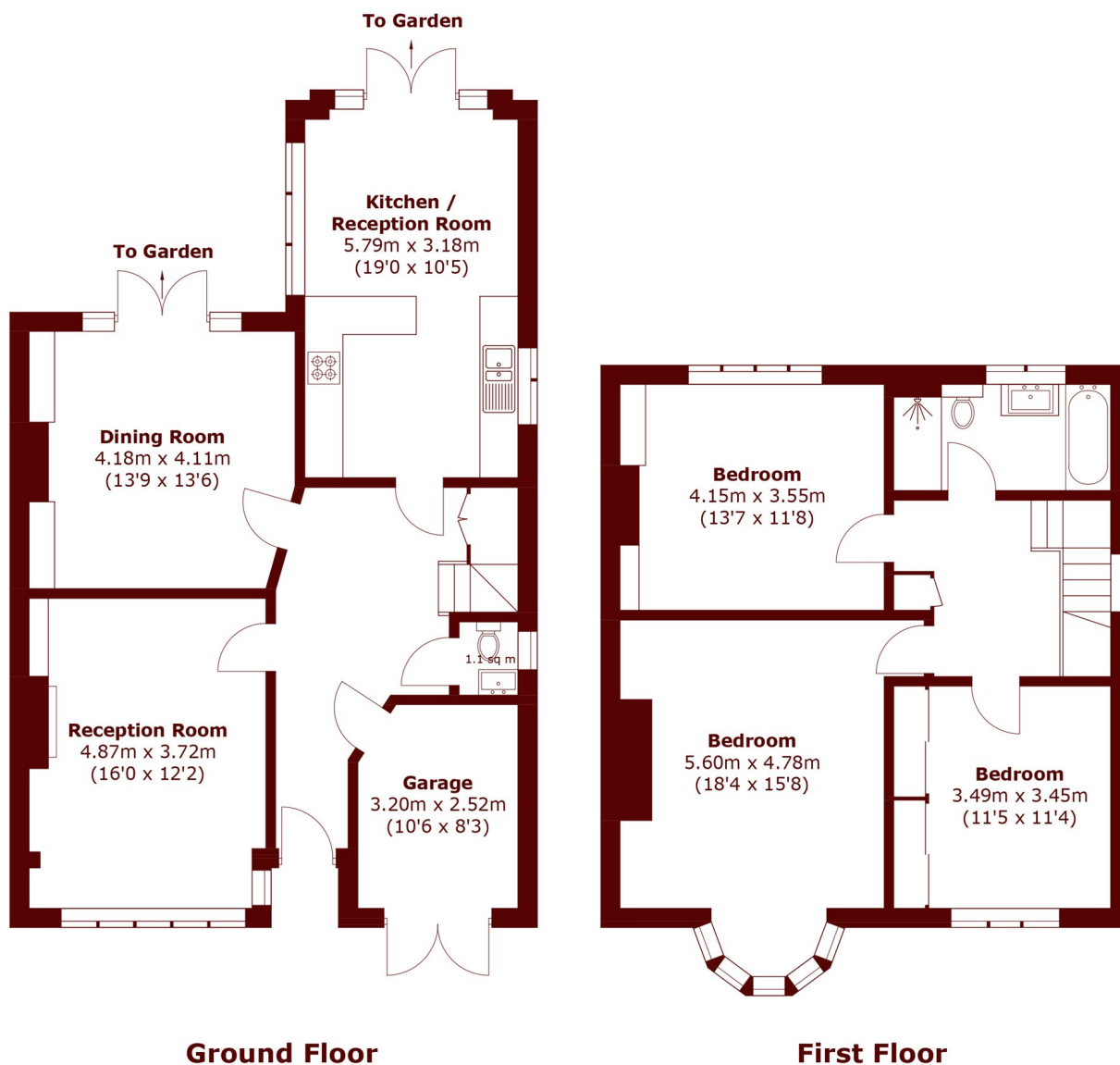
£5,000 per month

Set on a generous plot, this well-proportioned three bedroom home offers versatile living space and excellent potential to extend (subject to planning permission).

Three bedrooms  
Driveway parking  
Wandsworth Council

Ample storage  
Private garden  
Family home

# STEP INSIDE SUDBROOKE ROAD



Total area (approx.): 145.4 sq. m (1,565.1 sq. ft)

Balham & Clapham South  
020 8772 9200

Energy Rating: E We aim to make our particulars both accurate and reliable. However, they are not guaranteed; nor do they form part of an offer or contract. If you require clarification on any points then please contact us, especially if you're traveling some distance to view. Please note that appliances and heating systems have not been tested and therefore no warranties can be given as to their good working order

MARSH &  
PARSONS