



Thurloe Place, SW7

£1,475 Per week

Three bedroom property in a portered block, comprising of an open plan kitchen/reception, three bedrooms and three bathrooms.

Just 0.2 miles from South Kensington tube and 0.3 miles from Knightsbridge tube.

Features

- Portered Block
- Lift
- Communal roof terrace
- Semi Open Plan
- Knightsbridge
- South Kensington

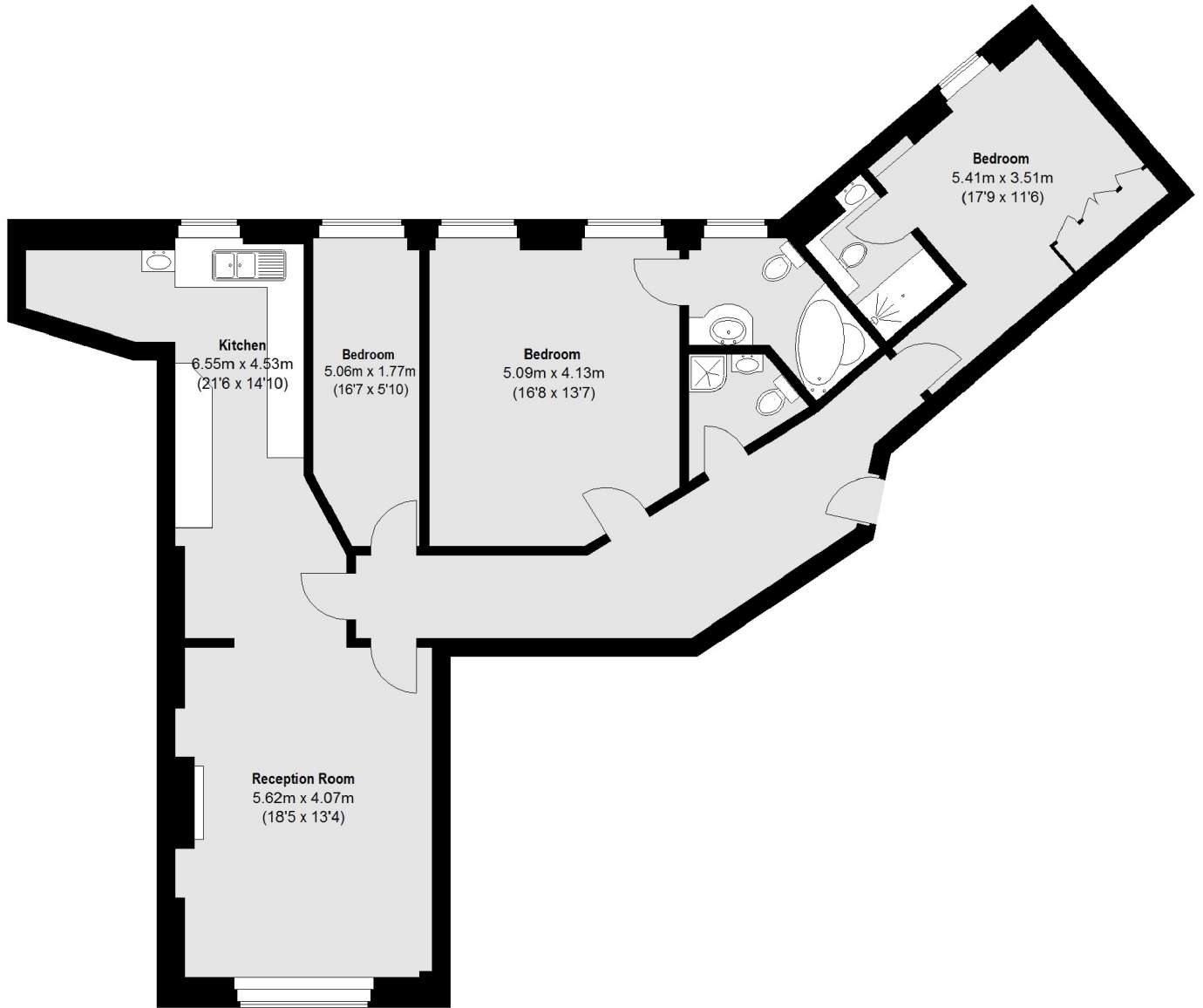


Thurloe Place, SW7

An impressive three bedroom apartment located in the centre of South Kensington. The property comprises a large reception room with semi open fully fitted kitchen, two large double bedrooms, a master with en-suite bathroom, a second bedroom with en-suite shower room as well, a further single bedroom / study room, and a shower room. Further benefits include lift, porter, hard wood flooring and high ceilings.



Thurloe Place, London, SW7



Total area (approx.): 117.6 sq. m (1265.8 Sq. ft)