



**Guide Price**  
**£285,000**

**Leasehold**

2x  1x  1x 

**Beech House, Oakfield  
Drive, Reigate, Surrey,  
RH2**

**OVER 60?**

Secure this property  
for up to **59% less!**

**cubitt & west**  
Helping you move forwards



## Main features

- A spacious apartment, set in a cul-de-sac location
- 2 double bedrooms, double glazing
- Requires upgrading/modernisation
- Communal gardens & garage-en-bloc
- Great location, short walk to town centre & train station
- No onward chain

## Accommodation

### TOP FLOOR

Entrance Hall: 15'4 x 5'8 (4.68m x 1.73m)

Lounge: 14'8 x 14'8 (4.47m x 4.47m)

Kitchen: 9'6 x 8'9 (2.90m x 2.67m)

Bedroom 1: 11'8 x 10'9 (3.56m x 3.28m)

Bedroom 2: 11'0 x 9'0 (3.36m x 2.75m)

Bathroom: 9'1 x 5'9 (2.77m x 1.75m)

### OUTSIDE

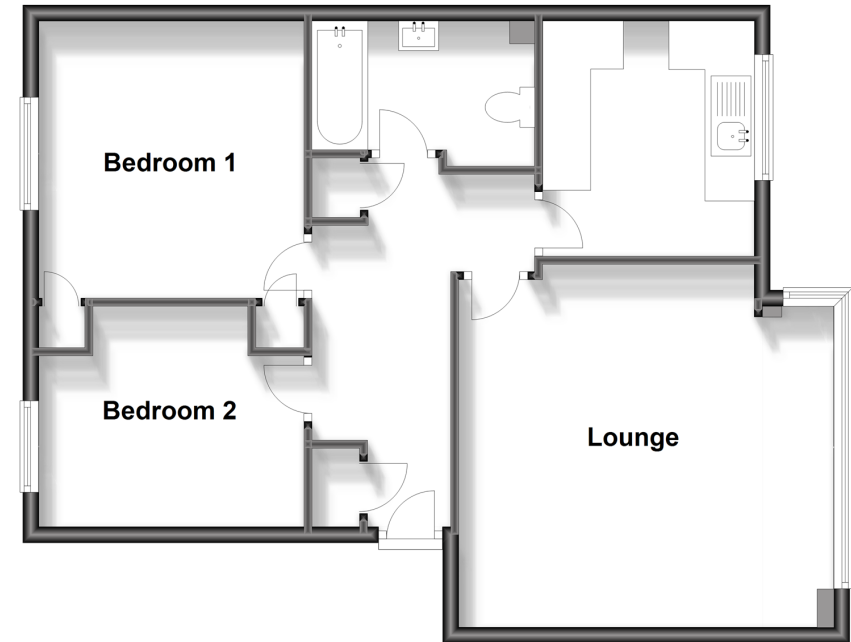
- Communal Gardens
- Garage-en-Bloc

Call Reigate - 01737 222020 ■ [cubittandwest.co.uk](http://cubittandwest.co.uk)

- Legal advice should be taken to verify fixtures/fittings, planning, alterations and/or lease details
- Appliances & services are untested, dimensions are approximate and floor plans are not to scale
- Through a Homewise Home For Life Plan people aged 60+ can secure this property for up to 50% less, by purchasing a Lifetime Lease.

### Top Floor

Approx. 65.7 sq. metres (706.7 sq. feet)



21612994/20251003/JB1/JB1