

# Rolfe East



## Bollo Lane, Acton

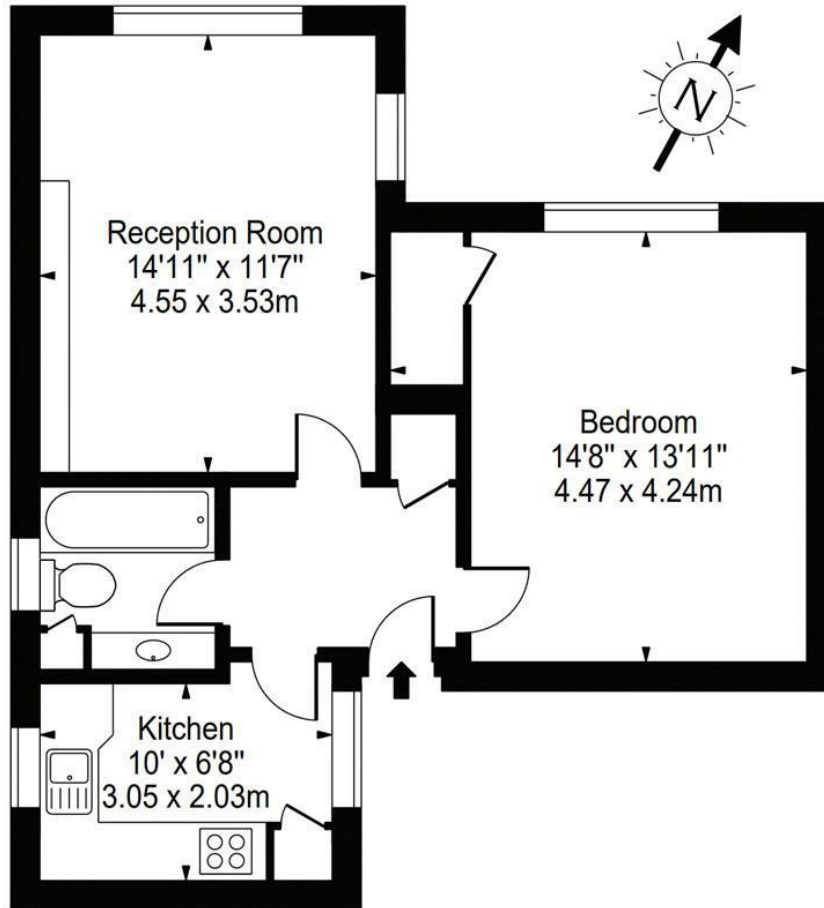
Offers In Excess Of £270,000

- Ground Floor Apartment
- One Double Bedroom
- Communal Gardens
- Adjacent to Acton Town Tube Station
- Long Lease

66 High Street, W3 6LE  
020 8993 7755

acton@rolfe-east.com  
<https://www.rolfe-east.com/>

**Gunnersbury Court, W3**  
 Approx. Gross Internal Area 537 Sq Ft - 49.89 Sq M



**Ground Floor**

For Illustration Purposes Only - Not To Scale Floor Plan by Mira Nikolova Photography

This floor plan should be used as a general outline for guidance only and does not constitute in whole or in part an offer or contract. Any intending purchaser or lessee should satisfy themselves by inspection, searches, enquiries and full survey as to the correctness of each statement. Any areas, measurements or distances quoted are approximate and should not be used to value a property or be the basis of any sale or let.

**Viewings**

Viewings by arrangement only.  
 Call 020 8993 7755 to make an appointment.

**Council Tax Band**

C

**EPC Rating:**

E

Energy Efficiency Rating		
	Current	Potential
<i>Very energy efficient - lower running costs</i>		
(92 plus) <b>A</b>		
(81-91) <b>B</b>		
(69-80) <b>C</b>		<b>74</b>
(55-68) <b>D</b>		
(39-54) <b>E</b>	<b>48</b>	
(21-38) <b>F</b>		
(1-20) <b>G</b>		
<i>Not energy efficient - higher running costs</i>		
<b>England &amp; Wales</b>	EU Directive 2002/91/EC 